

Sedbergh & District

LOOKAROUND

December 2019

Issue 383

Donation £1

Happy Christmas and a very prosperous 2020 to everyone in Sedbergh and District.

Well, we've now produced a full year of Lookaround, and hopefully have kept it true to it's original spirit

and purpose. Please let us know your opinions, what we need to maintain, and what we need to change.

Thank you to all who continue to support us!
Ed.

Sedbergh Christmas Late Night Opening

Wednesday 4th December 2019

6.00 - 8 p.m.

Father Christmas

Cumbria Gaita Band - Sedbergh Town Band - Dentdale Choir -

Flower Festival

Craft Market in St Andrews Church & Sedbergh School Library

*Tickets to see Father Christmas are on sale in
the Information & Book Centre.*



Late Night Opening is organised by Sedbergh & District Chamber of Trade & Business

CLOSING DATE: 15th of every month for everything

S & D Lookaround 72 Main Street, Sedbergh LA10 5AD

Mobile: 07464 - 895425

e-mail: editor@sedberghlookaround.org.uk ~ Web Site: <http://www.sedberghlookaround.org.uk>

Articles

A Tribute To The Late Jean Dixon	71
A View From the Fells (Cartoon)	78
A Year At The Peoples' Hall	73
Apple Day	67
Art Society	23
Autumn's Rhythm	34
B4RN For Marthwaite And Howgill	50
B4RN For Sedbergh Town	51
Bowling Club	15
Boxes Of Hope Cumbria	45
Charity Girls Jumble Sale For M.S.	71
Community Charity Shop	60
Community Swifts	37
Community Volunteers Sought	74
Councillor's Corner	33
Crime Update For November 2019	76
Dalesman Veterans' Offer	54
December Family Musings	39
Dementia Action Alliance	55
Dentdale - Head To Foot	41
Dentdale Christian Fellowship	12
Embodied Mind – Mindful Body	14
Environmental Network	63
Flicks In The Fells	75
Funded Electric Vehicle Charge Points	52
Fundraising For Ovarian Cancer	66
Garsdale Parish Council Aggravation Harassment	32
History Society	59
Information And Book Centre	72
January Family Musings	40

Ladies NFU Coffee Morning	41
Lakeland Voice	26
News From The Pews	9
News From The Pews Dent With Cowgill.	8
October Weather	38
Orchestra Concert	27
People's Hall News	74
Poppy Appeal 2019.	7
Pride	15
Public Transport In Rural Areas	77
Safe Fancy Dress Costumes	70
Sandra W Longlands 60th Birthday	76
Sedbergh Parish Council	30
Sedbergh School News	42
Settlebeck – " A Night To Remember "	44
Sight Advice South Lakes	58
Spring Show	68
St Andrews Coffee Mornings	66
Thanks	75
The Holly And The Ivy And Other Christmas Plants	5
Tim's Column	28
Town Band	28
W.D.B. Bus Timetable Change	53
W.I. Dentdale	47
W.I. Sedbergh	45
Waiting	10
What Is Fascia?	13
What3words	35
Zero Waste Sedbergh	65

Events

Artisan Market (14/12)	14
Barbon Domino Drive (17/01)	57
Burns Night (25/01)	73
Coffee Mornings	3
Dalesman New Years Day (01/01)	55
Dalesman New Years Eve (31/12)	54
Farfield Mill Xmas	25
Five In A Bar (14/12)	16
Grief Share (3/12, 17/12)	36
History Society (11/12, 15/01)	11
Lakeland Voice	6
Late Night Opening (04/12)	1
Malabar Yoga Brunch (29/01)	69
Meditation Centre (15/12)	15
Pantomime (13/12)	12
Sedbergh School Advent (08/12)	8
Town Band (03/12)	5
Walking Nativity (22/01)	22

Other Information

Advertising In Lookaround	4
Bed & Breakfast	91
Bus Time Tables	93
Car Parking Charges	76
Christmas Posting Dates	77
Diary of Events	90
Editorial	80
Groups and Organisations	88
Lookaround Editorial Team	96
Lookaround Information	84
Peoples Hall Hire Rates	83
Personal Messages / Christmas Greetings	85-87
Places of Interest	92
Public Information / Telephone Numbers	100
Puzzles	82/83
Religious Information	97
Regular Meetings	91
Train Times	95
Useful Telephone Numbers	81

Business Adverts

2020 calendar	60	Killington Marquees	72
Able Memorials	46	Killington Pele Tower	20
Black Bull	35	L.D. Taxis	39
Butterworth Carpet Cleaning	20	Lakes Scaffolding	70
Capstick Insurance	49	Laura's Loom	76
Carl Berry Window Cleaner	13	Leighton's Hairdresser	22
Carole Curran	48	Little Owls	31
Churchmouse Café	32	M.B. Designs Decorator	43
Community Swifts	23	Mathew Cook Stonemason	29
Craig Chamberlain I.T.	48	McGarry Solicitor	51
Cross Keys	38	MK Conversions Ltd	52
Cumbria Stoves	34	Oven Ready Turkeys	9
Dalton Burial Ground	45	Parkin And Jackson	45
Dawsons Fuels	21	Pennine Outdoor Fabrics	10
Duncan Law Plumber	18	Peoples' Hall	43
Embodied Mind	18	Red Squirrel	28
Farmland Required	40	Richard Hoggarth Builders	29
Fascia Fitness	27	Robert Powell Web Design	44
First 4 Home Improvement	30	Royal British Legion	58
Footloose	42	Ryan Simpson Septic Tanks	36
Fritz Hynryk	66	S.K. Decorating	56
G.J. Baines	37	Scott Ostle Services	75
Garsdale Design	63	Sheila Shuttleworth Dressmaker	58
H&M Craftsmen Kitchens	65	Smart Design	34
Handstand Press	17	Stephenson And Wilson Builders	63
Helping Hand	61	Steve Hopps Handyman	71
Howgill Upholstery	41	Stobars Hall	56
Ian Higginbotham Painter	66	Stramongate Press	24
J.E. Wilkinson Builder	31	Temptations Craft Boutique	41
J.J. Martin	47	The Head At Middleton	59
Jed's Gardening Services	11	Thomson Hayton Winkley	19
JHS Joinery	52	Tooby's Electrical	64
June Parker Acupuncture	44	Treadwell Flooring	50
K.W. Electricals	28	Valerie Hinde Architect	40
Karen Newis Tuition	16	Western Dales Bus	53
Karen Newis Yoga	33	Wools Of Cumbria	74

Weekly Coffee Morning St Andrews Church Every Wednesday 10am to 12 Noon

4th Dec Bellringers
11th Dec T.B.A.
18th Dec T.B.A.

8th Jan T.B.A.
15th Jan T.B.A.
22nd Jan Wild Life
29th Jan T.B.A.



Groups who would like to run a Coffee Morning
please call Pat Allen on 015396 21545



Advertising in Lookaround

For advertisers key points to note are as follows :-

- ◇ We will print an advert supplied by you, or we can design one for you.
- ◇ If you supply the advert please give it to us as a MS Publisher file, an MS Word file or a jpeg. We will print adverts supplied as pdfs but the quality may suffer,
- ◇ We accept hardcopy adverts and will try to reproduce them. Please let us know if you require a specific font.
- ◇ Adverts will be printed in the sizes specified below and should be supplied in one of these sizes.
- ◇ We do not print whole page adverts but will print half page adverts opposite each other.
- ◇ If you buy a year's worth of advertising (11 adverts) we will only charge for 10
- ◇ New advertisers buying 3 months or more worth of adverts will get an extra one free
- ◇ Further details for advertising and articles may be found in the Lookaround Information Section at the end of the magazine.

CONTACT INFORMATION

Email:

editor@sedberghlookaround.org.uk

Phone:

07464 895425

Address:

**Lookaround,
72 Main Street,
Sedbergh,
Cumbria,
LA10 5AD**

Items can also be delivered by hand to Sedbergh & District Tourist Information Centre at the above address (72 Main Street) during open hours, and deposited in the Lookaround Post Box inside the office,

PAYMENT INFORMATION

CHEQUE

Cheques Payable to :

**Sedbergh & District Lookaround
BACS**

Account:

Sedbergh and District Lookaround

Account Number:

23388557

Sort Code:

20-55-41

Reference:

Invoice Number, your name or reference.

This account is valid from January 2019. No other account details are valid for current payments.

**PLEASE REMEMBER TO
INCLUDE THE INVOICE NUMBER
WHEN PAYING BY BACS**

Advertising Rates

Single Column 2.56" x 1"	= £7.50
Single Column 2.56" x 2"	=£10.00
Single Column 2.56" x 3"	=£12.50
Single Column 2.56" x 4"	=£15.00
Double Column 5.2" x 2"	=£15.00
Double Column 5.2" x 3"	=£20.00
Double Column 5.2" x 4"	=£25.00
B & B and Camp-sites	= £2.00
Personal & Small Ads	= £1.00

THE HOLLY AND THE IVY AND OTHER CHRISTMAS PLANTS

Myles Ripley

The holly and the ivy,
When they are both full grown
Of all the trees that are in the wood
The holly bears the crown....The
holly bears a blossom

As white as lily flower....The holly
bears a berry

As red as any blood....The holly
bears a prickle

As sharp as any thorn;.....The holly
bears a bark

As bitter as any gall;The religious
Christmas imagery is entirely clear
but what of the Botany (and what
happened to any further mention of
the Ivy in the carol!)? The Holly tree
is an evergreen with hundreds of
species, and probably thousands of
varieties, which bears its berries (if
you are lucky) right up till Christmas,
which makes it suitable for interior
decoration. The glossy and
elaborately curved leaves are not
only a gift for making decorative
arrangements but represent an
advanced evolutionary adaption to
survival in winter. The thick cuticle
(the part that makes it look so shiny)
prevents water loss from the leaves
when water is relatively scarce due to
being frozen or just viscous at low
temperatures. In a season when food
is scarce the prickles reduce the
amount lost to grazers. Earlier in the
year small white flowers (to attract
pollinators) precede the berry
development. The religious
significance of blood, crown of thorns
and perhaps a bitter bark is clear – (I
have found no confirmation of this,
nor am prepared to make the tea!).

Most of the symbolism of
Christmas predates Christianity by
several centuries. The Celts had a
Holly King and an Oak King who were
twins who took it in turns to rule the
year with the Holly King coming to the
end of his reign after the Winter
solstice (Des 21st). For the Romans
Holly was used to honour Saturn, god
of agriculture, during Saturnalia,
another festival of the Winter solstice.
The Druids believed that Holly's
pointed leaves provided protection
against evil spirits.

Ivy isn't mentioned in the lyrics of
the carol after the first line but is
another evergreen surviving in the
"desert" when it climbs up walls.
Naturally it is a ground hugging
species, sometimes used by
gardeners as ground cover to

"Excellence through endeavour"

Sedbergh Town Band
present their

ANNUAL CHRISTMAS CONCERT

with

Father Christmas

7:30pm

Tuesday 3rd December
St Andrew's Church, Sedbergh
Admission £6 Under 16 £3

Sedbergh Town Band is a Registered Charity Number 1086817

suppress weeds. Once it starts climbing however, it leaves the moisture behind and needs a thick cuticle and woody stem surrounding the xylem to keep its upper foliage supplied with sufficient water. Judging by the activity of insects around my ivy covered wall whenever there is a warm day, even in late autumn, the inconspicuous flowers retain their desirability by scent. The berries are retained well into winter to disperse their seeds, to say nothing of increasing their decorative usage by Christmas florists. Ivy has strong links to the God Bacchus who was undoubtedly involved in Saturnalia.

Mistletoe is associated with Christmas. It is a hemi parasite of many species which sends roots out

to penetrate the tissues of its host, drawing nutrients from both its phloem and xylem. However, it also has actively photosynthesising leaves which also provided nutrients; hence HEMI-parasite. There are several species, though most sold in the UK is from the American species, (*Phoradendron flavescens*). The Druids greatly valued the Oak derived Mistletoe as they believed it gave life and fertility, protected against poison and acted as an aphrodisiac. It is associated with the Goddess Frigga, the goddess of love. Her son Baldur could not be killed by anything on earth until Loki realised that Mistletoe did not grow on the earth so could be used to fashion a dart to kill him with. Understandably with this list of properties, kissing under it is likely to have great effects – so much so that it has to be burnt on Twelfth Night, lest all those couples who have kissed under it are coupled for ever.

Christmas trees have a variety of botanical sources but are mainly firs. This is another xerophytic plant whose evergreen property means that they are exposed to a lack of water in winter. Most A level biologists will be very familiar with its anatomy as a textbook example of a xerophytic leaf. Even their stems are covered in these thick cuticled, low surface area to volume leaves/needles. Even after all these adaptations, most centrally heated houses are a bridge too far for the trees and our carpets become covered in dried out pine needles. You can buy trees with intact roots and keep them watered but their survival rate if planted out after Twelfth Night is low. You can keep your green soul alive by recycling



wish you a merry & melodious Christmas & a happy & harmonious new year

Concert "To Drive the Cold Winter Away." **Dent, Dec.6 7.30pm** (tickets ready for collection at Smithy Cottage, Farfield.)

Workshops to learn Folk Carols and seasonal songs **Dec. 1 at Farfield, Dec.7 & 8 in Dent, and Dec.14 Unitarian school room.**

Singing Settle *Carlisle, Ribbleshead, Appleby and Settle.* **Dec. 15** (learn songs on Dec.14) singing on train, in stations and round fire in pubs.

Scottish/Slovenia singing weekend, Jan. 25/26 2020 (Burns & Preseren)

Singing train from Dent to Slovenia via London, Paris and Munich with Interrail: **May 19 2020** Plus local workshops to learn songs in advance.

Harmonija - Sedbergh/Slovenia singing festival - June 26-28 2020

www.lakelandvoice.co.uk





them however. Many layers of pagan tradition are embedded in the history of a Christmas tree some of which have been replaced by Christian stories. St Boniface cut down a local Oak tree worshipped by his pagan potential congregation but in its place grew a fir tree to represent Christianity to his newly converted parishioners. The tradition of erecting and decorating a Christmas tree seems to be earliest documented in the 16th century in Germany (Alsace). This custom seems to have remained largely German until the early 19th Century when it began to spread via the nobility to other royal courts. Unsurprisingly with Britain's royal family uniting with the house of Hanover, the custom came to Britain and in 1832 Queen Victoria writes of her delight as a 13 year old with the two Christmas trees on display in the drawing room. In days of yore, the erection and decoration of the tree was confined to Christmas Eve involving the whole family. In turn it was removed on the day after Twelfth Night (at the risk of bad luck). Unfortunately retail "necessity" sees Christmas decorations as early as September!

POPPY APPEAL 2019.

*Nick Cross - Sedbergh
Poppy Appeal Organiser*

Once again Sedbergh, Dent, Garsdale, and all points east and west have risen to the challenge of Poppy Appeal. Over the two weeks that the appeal has been running we have raised just short of £8,000 on the first count. It is estimated that once other pledges, wreaths, forgotten tins and the usual straggle of money roll in we should not end up far short of £11,000 which, as we never cease to remark, for remarkable it is, shows the high regard in which Poppy Appeal is held locally; 2020 will, we hope, be another bumper year.

There has been one little cloud that has wafted across what has been an otherwise radiant scene; there have been some complaints that collecting tins and Poppies were removed on the Saturday before Remembrance Sunday. This was done for logistical reasons and not to interfere with those who customarily pass on the other side of the street to avoid the collector or choose not to buy their Poppy at one of the many shops and establishments where these might be bought over the fortnight, preferring to wait until the last moment to buy their Poppy. To these people the organisers are truly sorry, but we do have certain deadlines to meet.

As always, we wish to thank everyone who contributed to the Appeal and to those tireless souls who braved the elements to bring the poppies to you and finally to all involved with the count, the real unsung heroes.

NEWS FROM THE PEWS IN THE PARISH OF DENT WITH COWGILL.

Revd. Christine Brown

Congregations in both churches remain steady; the difference is that being part of the Christian Community without a full-time Vicar, everybody is given tasks to do. Isn't this what being a Christian means? Using everyone's talents to the full?

There are big plans ahead for both churches, faculties and fund raising continue to be sought after before the improvements can begin, but with the determination of the congregations they will achieve what they plan to do. The congregation may be getting older, but the determination of the people in Dent and Cowgill remains strong. Both churches are important

to the whole communities, they are bursting when being used for special occasions such as weddings, funerals and baptisms, along with the seasonal services such as Easter, Harvest, Remembrance and Christmas. The day to day running costs and Diocesan Share take a great deal of funding with so few giving to the churches on a regular basis; yet being in the Yorkshire Dales National Park does mean that restrictions on the use of Solar Panels on the extensive roof and such prevent us from playing our part in cutting down the use of fossil fuels.

We have had two wonderful weddings in Dent and another in Cowgill this year. The churches were filled with smiles, flowers three



beautiful brides and handsome grooms, along with many local people who always turn up to see a village wedding.

Baptisms are always a very special occasion, a time when we welcome a new member to the Christian Family, God's own Family, we pray that they return to worship with us as the years go by; their parents and god-parents too; they are always made most welcome.

Sadly we have lost too many good friends this year, friends that have worshipped in the churches for lifetimes, but we are sure that they are now continuing to worship in their heavenly home.

Christmas isn't that far away, and we will have the churches ringing with carols, supported by our wonderful Dentdale Choir and fabulous organist Roger Bush. Everyone throughout the dale comes and joins the throngs of voices to welcome Jesus Christ once again, although Christians understand that He is always with us everyday, not just at Christmas; but the spreading of the Good News each year reminds people that there is more to Christmas than presents and kisses underneath the mistletoe.

We wish you all a peaceful time preparing for Christmas, which doesn't need to be expensive, what it does need is the love Christ came to bring, the love of family and friends.

NEWS FROM THE PEWS



*Susan Sharrocks
Tony Reed Screen
Churchwardens*

The sound of eight half-muffled bells set the tone for the 10.30am service on Remembrance Sunday. Outside rows of red, white and purple poppies planted in the green grass from the lychgate to the north door combined with the colours of autumn leaves fallen from the trees made a stunning pathway on a bright and sunny, but cold day.

In readiness for this special service many hands had combined to sweep, dust, polish and tidy the church the week before. Other willing hands had set up the exhibition theme for this year's Remembrance, "Coming Home".

Red poppies decorated the pew ends and formed the centerpieces of large floral arrangements at the altar, in the Lady Chapel and at the font. Single poppies were scattered along the north and south windowsills.

As always the pews in St Andrew's were filled with townsfolk young and old. We sang such stirring hymns as "I Vow to Thee My Country" and stood in silent tribute as Peter Packham together with Keith Wood played 'The Last Post' and "Reveille". The collection from the service has been given to The Royal British Legion to help fund their work with ex-service personnel.

**OVEN READY
TURKEYS**
For Christmas
015396
25255





Pennine Outdoor Fabrics Ltd

SPECIALIST FABRICS & HABERDASHERY

We stock Waterproof, Breathable, Fleece & Tweed Fabrics
& a wide range of Buckles, Webbing, Patterns, Zips and Accessories

We wish all our customers a Happy Christmas

www.pennineoutdoor.co.uk

sales@pennineoutdoor.co.uk • 015242 63377 • Central Buildings, High Bentham, LA2 7HE

The church filled up again in the evening for the Sedbergh Town Band Concert in aid of the Royal British Legion. Toe tapping music, with Stuart Manger introducing each piece in his lively and informative style, certainly an annual concert not to be missed.

Dates for your diary:-

1st December - Advent Sunday
6pm Advent Carol Service

22nd December - "Follow the Star"
5pm at Cornerstone Community Church, process to St Andrew's for a living nativity traditional Carol service and refreshments.

24th December- Midnight
Communion Service 11pm

25th December - Christmas Family
Communion 10.30am

29th December -United Service
10.30am

A note to all of you who support the popular Wednesday Coffee Mornings. The last one for this year will be on 18th December and the first in the New Year will be on 22nd January. We send our good wishes to you all for Christmas and the New Year.

WAITING

Joan Abbott

'T was the night before Christmas
And all through the house
The voice of a child
Rang out with a shout

For Santa was coming
He'd soon be around
Delivering presents
To all whom he found

"I'm not going to bed
I'm watching for him
I'll see if he's real
And not just a whim"

His mother watched quietly
Smiling a while
Her son had a questioning
Suspicious mind

"Ok little fella
If that's how you feel
We'll watch out together
And see if he's real"

The two sat together
All cuddled up close
Till his eyelids just fluttered
Then silently closed

JED'S GARDENING SERVICES

REGULAR GARDENING WORK
UNDERTAKEN

LAWN MOWING, STRIMMING, PRUNING,
PLANTING, WEEDING, ETC.

MANY YEARS' EXPERIENCE

TEL. JED 015396 21480

OR EMAIL JED.FISHWICK@YAHOO.CO.UK

FULLY INSURED. REFS AVAILABLE

The mother just sat there
And looked at his face
Her tough little boy
Was now full of grace

She saw in his innocence
Life waiting there
A man in the making
Without any cares

She knew that eventually
Her child would be gone
But memories like these
Would still linger on

When he awoke
In his warm little room
A path from the doorway
With glitter was strewn

It led to his bed
Where a sack was set down
And presents o'er flowed it
Scattered around

By his pillow a note
With a pompom in red
Said " I hope you don't mind
But I put you to bed"

Your mother was tired
She'd fallen asleep
You'd patiently waited
So we needed to creep.

"The boy saw the glitter
And followed it down
Right to the armchair
All scattered around

Then back to the fireplace
And into the hearth
Yes Santa was real
But he'd had to depart

He'd had lots to do
Other children to see
But this little boy
He'd just filled with glee

SEDBERGH & DISTRICT

HISTORY SOCIETY

WEDNESDAY 11th DECEMBER

Some areas have stone circles, some
like the Howgills do not

Tom Clare: An illustrated talk on stone
circles and their locations.

7:30 PM - ST. ANDREW'S, SEDBERGH

WEDNESDAY 15th JANUARY

Icehouses and the
international trade in ice

Rob David: An illustrated talk on the
icehouses of Cumbria and the
international trade in ice in the nineteenth
century.

7:30 PM - ST. ANDREW'S, SEDBERGH

Everyone is most welcome to attend
any or all of our lectures.

Members £1 ~ Non-Members £2

www.sedberghhistory.org

For further information please contact
Richard Cann, 015396 20771.

In the event of very bad weather,
please phone before you set out.

DENTDALE CHRISTIAN FELLOWSHIP

Sarah Woof

Over recent months we have continued to gather on the fourth Sunday evening of a month to have supper together and fellowship.

We celebrated the feast of Tabernacles and built a cardboard shelter in the garden before a meal and devotions together.

On Halloween we had a party for all the 'trick and treaters' out and about and served hot chocolate, and hot dogs along with squash and cakes.

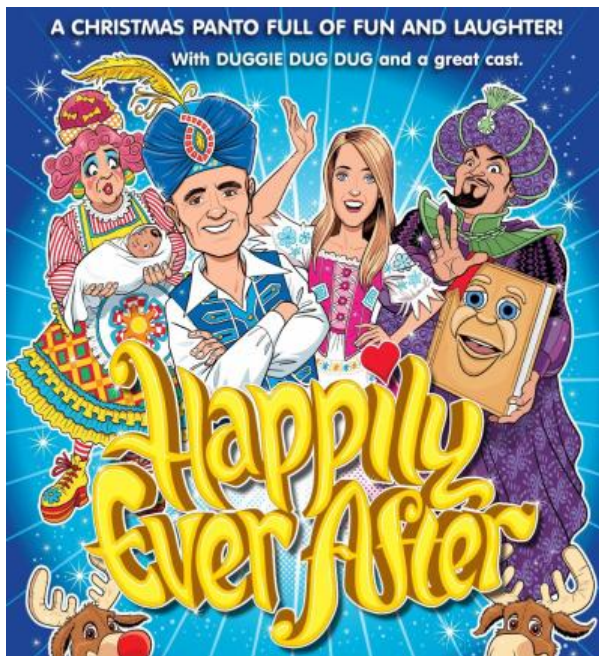
On we go towards the New Year trusting God and sharing His love. Everything we do, the Sunday

evenings, the special feasts and events are always open to everyone.

We are already praying into and planning the annual festival for next August, the way the dates are, although it is the 1st weekend in Aug it starts on Fri July 31st!

And, through the generosity of people who love God and want to help, everything DDCF is free. Sometimes there are tubs for donations but mostly free and certainly no pressure to donate.

So, come and join us, you will be made very welcome. Thanks everyone.



A hilarious adventure in Pantoland to find the lost heart of Christmas before disaster strikes!

With lots of panto characters, lots of puppets and a nativity too!

Small charge for refreshments.

Brought to you by the Western Dales Mission Community

FRIDAY 13TH

DECEMBER

6PM

FREE ENTRY

WHAT IS FASCIA?

Yvonne Cervetti

The bouncing ease of a gazelle, the flexible strength of a panther, and the bendy elasticity of bamboo – all qualities of the body's connective tissue, called fascia.

It is not surprising that most of you will have no idea what the word 'Fascia' means when pertaining to the body. Wikipedia lists fascia boards of a building, dashboard of a car, a removable mobile phone housing, a sash worn by Roman Catholic clerics even a US database but it does also list it as a 'layer of connective tissue in the body'. It is in fact a whole body wide network of collagenous fibres that permeates and connects every part of us, including our muscles, bones and organs. It gives form and structure to our bodies, is a huge sensory organ and is essential to every move we make!

Although as early as 1899, Andrew Still, founder of Osteopathy urged fascia to be given the same respect as the brain stating that 'the soul of man with all the streams of pure living water seems to dwell within the fascia of his body', it wasn't until 2007 that clinicians and scientists came together at the first Fascial Research Congress (see www.fasciaresearch.com).

Manual therapists have been releasing fascia for decades but as research progressed it became clear that fascia is also the tissue of movement playing a significant role in transmitting force throughout the body and therefore critical for flexibility, elasticity and superior performance.

C BERRY WINDOW CLEANING SERVICES

NEED A WINDOW CLEANER?

FRIENDLY LOCAL RELIABLE SERVICE

Carl Berry
10 Finkle Street
Sedbergh
LA10 5BZ

07827 813 974

The great news is that it is never too late to train your fascia and the benefits are huge: muscles work more efficiently, recovery time after heavy exercise shortens, movement, coordination & athletic performance improves, posture and body shape are more resilient and youthful! (Robert Schleip, co-founder of Fascial Fitness)

Whilst Fascial Fitness, is common training in Germany & Austria it is slowly gaining momentum in the UK. I was lucky to complete my training in Dublin 3 years ago and have been using the principles in my treatments and Healthy-Steps classes ever since, but only offering more dedicated Fascial Fitness classes in 2019.

In FunKi Fascia ('Fun' because it is, Ki means energy, which we use lots of!) I combine the principles of Fascial Fitness with my love of dance and encourage you to 'move to your groove'.

See my advert on page 27 for regular times and venues.

Workshops dates coming soon.

SEDBERGH *artisan* MARKET

THE BEST *craft* AND *food* LOCAL *producers* CAN MAKE!

SATURDAY 14 DEC on MAIN STREET, 9.30-3
... thanks for your support this year, see you in 2020

EMBODIED MIND – MINDFUL BODY

Andi Chapple

I'm offering this short course in the New Year with two aims. The first is to show people some simple, relaxing, gentle yet powerful exercises, based on movements from t'ai chi, to help get things going again after the holidays set up for the spring. The second is to suggest some basic experiments in awareness to help get people's minds more connected with their bodies – the same sort of ground covered in mindfulness or meditation. For me, the good thing about t'ai chi and related arts is that they cover both those aims at once.

People talk about 'the mind-body problem' and usually mean (as The Smiths sang a while ago), "Does the body rule the mind or does the mind rule the body? I dunno".

The problem is when we think of them as separate. When I practise I seem to find that I can be aware of my whole body as fully as I am of my thoughts and that those thoughts are

affected, moment to moment, by the state of my body.

I have been an instructor member of the T'ai Chi Union for Great Britain since 2011. I hope these classes will be fun, interesting and useful and that you will leave in a better frame of mind – and body! – than you arrived. They are suitable for young and old and the exercises can mostly be adapted for people with movement difficulties. I hope to create a safe space for exploration which will support people through the occasional uncertainties that learning something new can bring.

We start on Friday 10 January at 7pm in the Cornerstone church hall on New Street, I'm asking £7 a session or £50 for the whole 8 weeks. Do get in touch on andi@freakout.biz or 07891 908025 to let me know you're interested or suggest a tweak to the start time.

Have a look at www.freakout.biz/taiji for a bit more information.

And see the advert on page 18.

太極拳

SEDBERGH BOWLING CLUB

Linda Killops

We have had a very successful year of bowling with good weather to play most of our fixtures and competitions. We had entered a second team in the Kendal and District league. We also had two teams in the Westmorland Senior league and one in the Rural league. We played in Victoria's floodlit league.

We hosted the 41st Open pairs in May when we provided refreshments raising funds for the club. We also hosted Division 5 merit playoffs in September. Everyone enjoys these events and we see some excellent bowling.

Our coffee morning was well attended in St Andrews church raising £245. Many thanks to Tony and Ann Reed-Screen for help and guidance and to all who contributed.

Our supper was again at the Golf Club. 30 members and friends enjoyed delicious food and good company. Many thanks to Ruth, David and staff for their hospitality.

One of our members, Peter Craven, was celebrating his 90th birthday. He received gifts and cards and a cake with candles and a policeman decoration (he was a policeman in Sedbergh).

The green has now closed for treatment. We open again in March. The AGM will be in February as advertised in Lookaround. Agendas will be distributed prior.



PRIDE

Sandra Gold-Wood

Last month we left the young lovers, Miles and Louise, wondering if their feelings would survive the years of university. While PE teacher, Mr. Woodville, was hoping that Miles would be his ticket back in to the world of top class football.

Ray Woodville, teacher, and Dave Gordon, football scout, stood on the side lines and watched as Charter Comprehensive won easily over the best school team the County could field. The Charter team was good but Miles was in a class of his own.

'Good God Ray, you were right, the boy is dynamite, I'm very glad you called me.'

'I thought you'd be interested.'



**THE
MEDITATION
CENTRE**

be still • be inspired • be free

PROGRAMME FOR DECEMBER 2019

Sunday 15th 11am – 1pm
WINTER SOLSTICE
MEDITATION
EVERYONE WELCOME

To book: email meditationcentreteam@gmail.com
Telephone 07582 017 396
The Meditation Centre, Dent, Cumbria LA10 5QR
www.meditationcentre.co.uk

'Interested is a bit of understatement, he's even better than you were. Is his father here? I'd like to get him a trial with one of the big clubs. Do you know how old he is?'

'He's 17', Mr. Woodville sighed inwardly, as he remembered the thrill of his days as a top-flight player, I don't know anything about his family. No wait, he's only got his Mum.'

Meanwhile, Miles was enjoying the admiration of his fellow team members and looking forward to being alone with Louise later.

Everyone was cheering, the County Cup was Charter Comprehensive's for the first time in the school's history. The Headmaster was beside himself with pride and the team were



Experienced teacher available for private tuition
KS2, KS3, 11+, 13+, GCSE English
Karen 07776 386918

lined up on the stage with all the school assembled below. Speeches were made, the cup was held aloft and joy abounded. It had been a great day for the school.

Outside the school gates Dave Gordon, the football scout, waited in his top-of-the-range BMW. Miles was walking across the playground Louise at his side, and Mr. Woodville close behind. The school students were running around shouting, 'We won the cup, we won the cup.'

'Miles, called Mr. Woodville, have you got a minute? I'd like to introduce you to a friend of mine, Dave Gordon.' Dave Gordon slipped out of his car.

'Hello, young man, I'm a football scout and I'm here to tell you that I am very impressed with your abilities'. Miles politely held out his hand and Dave Gordon shook it vigorously, 'I wondered if I might have a word with your parents. I believe you've got what it takes to be a professional player.'

'Err' well, thank you, sir. My mother will be home tomorrow, so you could come in the afternoon, as that will give me time to explain what it's about.'

St Andrew's Church, Sedbergh

Five in a Bar Concert



Saturday 14 December 7.00pm
£10 on the door

'Five in a Bar' sing a new selection of Yule-tide songs from around the world to celebrate this magical season.

www.fiveinabar.co.uk

Proceeds supporting
farfieldmill



'Good, thanks son, I'll be there about three tomorrow then, ok.'

Miles agreed and, then, he and Louise hurried away to celebrate in their own way. Later up in Louise's room Miles was thinking about his brother, Charles, and wondering how his mother would take his exciting news. Louise too was thinking and felt instinctively that this could take Miles away from her and, so, she made a firm decision that she would do nothing to stand in his way. Looking down at Louise, Miles noticed that her eyes held tears even though her smile was shining up at him. He kissed her gently.

His mother's reaction to the try out for football was a bit of a surprise. Miles had been worried that it would bring back all the bad memories for her. But the meeting went well and

Mrs. Saunders said that it was up to Miles, as it was his life and he should choose.

Three months after Miles had chosen his path, Louise Taylor sat at her kitchen table holding a letter in her trembling hands. Gritting her teeth, she ripped it to bits, it was as if all the anger and frustration she felt had found its way into her fingers.

'What are you doing love?'

'Nothing'.

Her mother didn't believe that for one moment and so she picked up the paper, to see what had upset her daughter so much. Mrs. Taylor slipped her arm around her daughter's shoulder. 'Never mind there are plenty of other universities'. As she spoke she smoothed out the paper, 'No, wait a minute, look, look

GIVING BOOKS FOR CHRISTMAS

HANDSTAND PRESS in Dent has been publishing **Cumbrian Books** by Cumbrian authors for almost 15 years.

Book lovers and anyone interested in local history will enjoy

THE LANGUAGE OF THE LANDSCAPE – A Journey into Lake District History

by Angus Winchester.

Published in November 2019 - Price £10

For Poetry Lovers

THIS PLACE I KNOW – A New Anthology of Cumbrian Poetry

Winner of the Lakeland Book of the Year Poetry and Literature Prize

Runner up for the Hunter Davies Lakeland Book of the Year.

Published 2018 – Price £10

For more details of this book and a list of local books published by Handstand Press go to www.handstandpress.net or visit Westwood Books in Sedbergh where Handstand Books are on sale.

HAPPY READING AND HAPPY CHRISTMAS FROM HANDSTAND PRESS!

Embodied mind – Mindful body

FRIDAY NIGHTS FROM 10 JAN '20 FOR 8 WEEKS

Exercises derived from t'ai chi to help relaxation and make movement more efficient and fun. Experiments in awareness to get to know how the mind and body work together. A safe environment for exploration.

**Cornerstone Church Hall
New Street, 7 - 8.30pm**

**with Andi Chapple £7 drop-in/£50
andi@freakout.biz or 07891 908025**

Louise, it's not a rejected offer, they are offering you a place.'

'Oh, Mum, you don't understand.'

'What is it I don't understand Louise? It's a place at Winchester and I thought that was exactly what you wanted.'

Louise left her bemused mother staring after her as she ran up the stairs, slamming her bedroom door with all the pain of her breaking heart. A while later Mrs. Taylor carried two cups of tea up the stairs and knocked at the bedroom door. She sat down on the bed where Louise was lying and asked her what was wrong.

'Oh Mum, I'm such a fool, I've ruined everything, my life is over.'

'Darling, don't be silly, it can't be that bad, I mean it's not as if you are pregnant.'

As soon as the words had left her lips, Mrs. Taylor knew the answer, 'Oh, I see, that's it.'

Louise nodded and poured out all her sorrow with her tears and her words, 'I'm so sorry Mum, I don't know what I'm going to do?'

Mrs. Taylor held her daughter until her tears subsided and then tucked her into her bed. During the week

Louise and her mother visited their Doctor who fixed up a scan and worked out a due date. Mrs. Taylor thought she should tell Miles. Louise refused it as was the last thing she wanted was his pity.

A mere seven months had passed by and Miles was pinching himself as he stood in the kitchen of his very own flat. The trials and training had gone so well that he now played for Spurs reserve team. Only yesterday, he had signed a five-year contract with the club and, best of all, in six weeks, he would be playing with the main team. He studied himself in the mirror, he was tanned and fit. He'd been interviewed on TV, photographed for magazines, and he'd signed a sponsorship deal for

DUNGAN LAW Ltd

Plumbing & Heating Engineer

Bathroom Suites & Tiling

Central Heating Systems

General Plumbing



Mob: 07796 544596

Tel: 015396 20930

after shave. Designers were falling over themselves to give him suits and clothes just so they could say he wore them. Life was great, he laughed out loud.

Briefly, Louise crossed his mind, he used to text her but lately he hadn't bothered as she seemed to have cooled, anyway, and he guessed she was at Uni. What did he care as there were plenty of girls to choose from?

Mr. Saunders was flicking through the sports channels in his flat in Barcelona when he was suddenly struck by what was on his TV screen. At first he thought he was mistaken and moved closer to the screen but there was no mistake. He listened as the TV newsman talked to his son. Yes, his son. He just had to tell

someone. He picked up the 'phone but there was no one he could call. He packed a bag and called a taxi.

Mr. Saunders landed at Heathrow around 3pm. Outside the busy airport he engaged a taxi and went straight to the Spurs ground. He told the receptionist who he was and was surprised to find her less than impressed. Eventually, he did as she asked and left a note for Miles. It crossed his mind to ring his ex-wife. He assumed she lived at the same place.

'Hello.'

'Janet, is that you.'

'Who's speaking please.'

'Don't be silly - it's me Jeffery.'

'Oh, and what do you want.'

The Rural Law Practice of Thomson Hayton Winkley Solicitors



Invites you to join us for a glass of mulled wine and a mince pie at Smatt's Duo, 32 Main Street, Sedbergh at Christmas Late Night Opening on Wednesday 4th December from 6pm.

Kendal: 01539 721945
Crooklands, J36: 015395 67571
Kirkby Lonsdale: 015242 71222
Windermere: 015394 46585

Trusted Solicitors & Advisers
ThomsonHaytonWinkley


www.thwlegal.co.uk

'I want to see Miles of course, just get the boy to ring me, I'll be staying at the Royal Oak, I'll give you the number. Have you got a pen.'

'I would tell you what you can do but I'm too much of a lady', said Mrs. Saunders as she replaced the receiver. What a cheek that man had. She knew only too well why he had 'phoned as he wanted to bathe in the glory of his son's achievement. Not while I breathe, she thought. Later she decided she should tell Miles, as the man was the boy's father after all.

Jake was busy planning a welcome home party for Miles. He'd phoned round the old school football team and other friends. Everyone was pleased to have the opportunity of meeting up with Miles again. As he



— KILLINGTON HALL —
PELE TOWER

GRADE II LISTED
**LUXURY HOLIDAY
ACCOMMODATION**
NOW OPEN

w: www.killingtontower.co.uk
e: hello@killingtontower.co.uk
t: 015396 45845 or 07734 212191

started writing a list of the girls to ring he thought of Louise. He knew Miles and Louise had drifted apart and he wondered if the spark might rekindle if they met up again.

On his way home Jake stopped off to see Louise. He hadn't seen her in months. Mrs. Taylor answered the door and greeted him cheerfully. He asked if Louise was at home and then waited on the door step while Mrs. Taylor went inside. When she returned she told him Louise was not feeling well.

'Oh, I'm sorry about that, would you please give her this invitation which is to a party that I'm giving for Miles Saunders at the weekend.'

'Thanks Jake, I'll pass it on.'

As Jake walked away he couldn't help feeling there was something wrong, as he'd never been kept on the door step by Louise's mother before, as she wasn't that kind of person. He looked back at the house



Carpet and Floor Care
Butterworth Cleaning Services
Domestic and Commercial
mark@carpetandfloorcare.co.uk

Call us: 01539 234443
01524 271348
07989 402333

CARPET CLEANING

- HEAT CLEANS
- DEODORISE
- STAIN PROTECTS
- CARPETS DRY IN 30 MINUTES

BOOK NOW!
Call Mark

OUR CUSTOMERS CARPETS HAVE BEEN TRANSFORMED... COULD THIS BE YOU?
CALL MARK TO DISCUSS YOUR NEEDS

GET YOUR CARPETS CLEANED IN TIME for Christmas

PROFESSIONAL, FULLY INSURED & UNIFORMED. WE MOVE ALL YOUR FURNITURE FOR YOU!

SEE OUR WEBSITE FOR OUR LATEST OFFERS
www.carpetandfloorcare.co.uk

WE ACCEPT
MasterCard VISA

and thought he caught sight of Louise at an upstairs window.

'Oh! Louise it's no good, you know as you can't hide away, and very soon you'll have a baby, what are you going to do stay in for the rest of your life. Why not go to this party?'

'Oh! Mum, I can't, just look at me.' Mrs. Taylor hugged her daughter. Miles read the letter from his father. He couldn't believe the audacity of the man. It was addressed, 'my dear son', and asked if he would like to meet up for a chat. 'My dear son', spat Miles, he knew what his father was up to and he was having none of it. The man had bullied him and his mother and then, selfishly, left so he wouldn't have to face people who asked about

Charles. He could go to hell. He tore the letter up and binned it.

Saturday night came and everyone waiting at Jake's house for Miles to arrive. Mrs. Saunders and the new man in her life proudly stood close to the door. Jake greeted everyone as they came in, he checked his watch, Miles was late. Suddenly there was a commotion outside and Jake knew he'd arrived.

Miles walked in with a girl on each arm, everyone clapped and cheered and he lapped it up, posing for photographs with all his old school friends. He didn't even ask after Louise. As the evening wore on Jake found himself sitting with Tina Bailey and he asked her if Louise was feeling better, he was quite unprepared for the answer.



Wishing everyone a Merry Christmas and a Happy New Year

Keep cosy this Christmas with our excellent Woodsure Ready to Burn Kiln Dried logs and Heat Logs. Both are perfect for any fire.

Tote Bags of Kiln Dried Logs from £85
Medium Sized Crates of Kiln Dried Logs from £130
20kg Hotmax Heat Logs Per bag £7.00
5 pack of Blazers Heat Logs £4.50

We stock a wide range of solid fuels which include these popular products:-
Multi-Fuel Ovoids - Housecoal Trebles - Homefire Ovals - Housecoal Doubles - Newheat Smokeless Ovoids
All these products and more are available in handy sized 25kg pre packed bags

To keep the Garden Birds happy through winter we have in stock :-
25kg bags of High Quality Runner Peanuts - £40
20kg Wild Bird Seed - £13
20kg Dehulled Sunflower Hearts - £30

Tel:015396 20210 ~ email:office@dawsonsofsedbergh.co.uk ~ www.dawsonsofsedbergh.co.uk

'Better, well I expect she will be once she's had it.'

'Had it, what are you talking about?'

'Don't you know? Louise has got less than six weeks to go before she brings another little soul into this cold hard world, and she was the smart one.'

'Who's the father?'

'I can't believe you asked me that.'

Jake watched as her eyes scanned the room till they found Miles. 'I won't point as it would be rude.' Jake hid his shock and changed the subject. His mind, however, was busy trying to understand. Miles hadn't said a word. Later, he would sort Miles out and asked him why he hadn't mentioned Louise's condition. Miles

The Western Dales Mission Community

**Invites you & yours to take part in a
Walking Nativity on Sunday Dec 22.**

All you need is a Lantern



Just come along to Cornerstone Church
New Street from 4.30 pm to get into cos-
tume have a cuppa and a chat. We'll set off
down Main St to St Andrews at 5.30pm.

**A Carol Service will follow at 6pm.
Enquiries 015396 21808**

**LEIGHTON'S BARBER
SHOP
& HAIR SALON**
WOULD LIKE TO WISH ALL OUR
CLIENTS A MERRY CHRISTMAS
AND HAPPY NEW YEAR.
THANK YOU ALL FOR YOUR
CONTINUED SUPPORT.
APPOINTMENTS ARE NOT
ME ALWAYS NECESSARY AS
015396 21433

said he had no idea what Jake was on about.

'Oh come on Miles, Tina told me and, if she knows, everyone knows.' 'You've lost me Jake.'

'Ok, Louise is pregnant.'

Miles felt as if the world had stopped turning. Anger rose as he realized she'd kept it from him. Then it came to him it wasn't his, of course, that was it. He looked Jake straight in the eyes and shrugged 'So what, it's not mine.'

Jake looked at Miles as if for the first time.

'Not yours? She's only got six weeks to go, you have to go and see her. What must she be going through?'

'Why should I care, it's nothing to do with me and, besides, I have got my career to think of and I can't saddle myself with a wife and kid. Anyway, why are you making such a fuss?'

**SEASONS GREETINGS
FROM SEDBERGH
COMMUNITY SWIFTS**



Miles went to walk away but Jake grabbed his shoulder and spun him round, hitting him squarely on the jaw. Miles lashed out and, in a moment, they were scrambling over the floor. Mrs. Saunders ran over and shouted for them to stop. They quickly came to their senses and stood up but neither made eye contact with the other. They went their separate ways. Miles with his mother and Jake with his school friends. The party was over.

Louise gave birth to a little boy on the same day that Miles made his debut for Spurs first team, adding to his kudos by scoring twice.

Jake presented Louise with a bunch of red roses and smiled with her at the tiny baby boy in her arms.

The End.

I hope you have enjoyed the story, back next year with a new one. Merry Christmas.

ART SOCIETY

Jenifer Alison

Light through the Trees
Linda Hollingshead gave a very inspiring demonstration at our Friday meeting on November 8th.

While she painted a very striking acrylic interpretation of 'Light through the Trees', Linda's running commentary was interspersed with many very useful technical points. There was a strong emphasis on colour, tone and composition. Linda's motto is 'Paint and Let your Heart Sing'. This comes through in her very presence. Linda finds joy in developing styles and techniques to express the beauty in nature. As she says herself, her approach 'dances' between realism and abstraction. It became clear during the Saturday workshop that Linda loves to help other artists to develop their own creative styles. She worked tirelessly

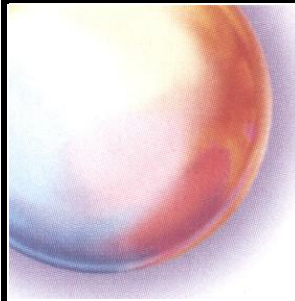




all day, giving individual support and encouragement – not a mean feat as there were 14 participants. We all painted using photographs and sketches we had brought with us, using our preferred media. The general atmosphere was one of enjoyment and in some cases excitement as we enhanced our own styles of painting. The accompanying pictures show Linda discussing our work with us. She told us at the end of the day that she had thoroughly enjoyed working with such an enthusiastic and competent group. Many thanks to you, Linda!

Painting Day: November 30th 2019

On this painting day we shall have the opportunity to experiment with ways of creating Christmas Cards. This is a development from Gill Impey's session with Barbon Art Society which was a great success.



stramongate press

printers

printers

of

Sedbergh Lookaround

Stramongate Press Aynam Mills
Little Aynam Kendal Cumbria LA9 7AH

phone 01539 720448

fax 01539 730253

e-mail info@strampress.co.uk

website www.strampress.co.uk

Participants are also welcome to work on their own projects if they wish.

The Wednesday Afternoon Group is increasing in popularity! They meet in the People's Hall Committee Room. John Conway and Margaret Copestake invite you to come and join them for a couple of sessions, and if you like what you see, you can join the group! Contacts:

John Conway:

conway44@btinternet.com or Tel: 01524 241254

Margaret Copestake:

margaretcopestake@gmail.com or Tel: 015396 21842

A message for the Portrait Group

There is an error in the date for February on members' cards: the group is meeting on Thursday 13th February 2020 and not Sunday 16th

February! If you are interested in being part of the Portrait group, contact Hilary Moore:

rwmhm@yahoo.com or tel: 015396 20352

If you would like to join the Society, please contact Mike Morrison: - mikemorrison422@btinternet.com; tel. 015396 20209 for membership.

If you would like to attend a demonstration or try a workshop to see whether it is for you, contact Jenifer Alison: - jen.alison10@gmail.com; tel. 01539 824666, or Gill Impey: - gillimpey@hotmail.co.uk; tel. 01539 726640

Information about us, including next year's programme, can be found on our website:

www.sedberghartsociety.org

farfieldmill

Handcrafted Gifts - Seasonal Cards - Exhibitions -
Heritage - Craft Gallery - Artists' Studios - Tea Room



Open until 23 Dec * Closed 24, 25 & 26 Dec * Open 27 Dec - 3 Jan
Closed for annual maintenance 4 Jan - 17 Jan * Reopens 18 Jan
Garsdale Road Sedbergh LA10 5LW www.farfieldmill.org 015396 21958

LAKELAND VOICE

David Burbidge

We're all ready for another cracking season of festive singing and folk carols - with our annual weekend in Dent December 6-8 with concerts, workshops, pub singing and walks, Kendal carols Dec. 14, and then all aboard the Settle Carlisle railway December 15 singing on the trains, in the stations and pubs in Ribbleshead, Appleby and Settle.

Our community choirs in Kendal and Bentham are stuck into learning our programme of festive songs - but you will be most welcome to join us at our many events over weekends in November and December - or every Tuesday and Wednesday after the new year. As well as being famous for the warm welcome our choirs offers to new singers, we have some fabulous optional outings: an evening singing in a candlelit cave, rousing pub singing sessions, spectacular singing in Westminster Abbey and the Slovenian embassy in London, and star lit walks through the winter

landscape singing at the doors of cottages cradled in the dale,...and more often than not, round the fires of the warm-hearted folk who live here.

December 6-8 - Dent folk carols weekend. A return of our lively folk carols weekend with workshops learning these lovely old carols, cosy village cottages, singing walk, concert, meeting some of the most hospitable people in the country who live here, pub singing, and all the camaraderie at this celebration of harmony and good will. Celebrating 25 years of singing in the Dent Memorial Hall.

December 14 - Kendal folk carols day with singing in the market place, and round the open fire in the Unitarian school room. Plus evening singing walk visiting cottages cradled in the dale.

December 15 - Singing Settle Carlisle - our annual train singing weekend with songs on the train, in the stations and pubs alongside, alongside several local choirs.

Do get in touch via our website www.lakelandvoice.co.uk



SEDBERGH ORCHESTRA CONCERT

Angela Weir

With the wind blowing hard outside the Parish Church it seemed appropriate that the Sedbergh Orchestra began its concert on 14th November with The Hebrides Overture, otherwise known as Fingal's Cave. Mendelssohn wonderfully evokes the wild west coast of Scotland with crashing waves and stormy winds blowing through his music, and the orchestra, under the baton of its newly appointed conductor, Roland Fudge, did full justice to this familiar and popular piece of music.

This was followed by Handel's Concerto for Chamber Organ: a curious piece, as it seemed more a solo work for the organ, with occasional participation from the orchestra. It appears that Handel sometimes performed this, and other pieces like it, during the intervals in his operas, which must have

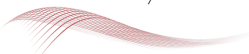
infuriated his players who would surely have wanted a break! Roger Bush was the excellent soloist.

The performance ended with Gounod's First Symphony. Before it began Roland asked if anyone in the audience knew it: apparently nobody did. "Good," he said, "then you won't notice any mistakes!" It was an attractive and lively piece, so much so that it almost had Roland dancing on the podium, full of bright tunes, and it is surprising that it isn't better known. To my untutored ear the orchestra played pretty much all the right notes in pretty much the right places! All in all, a splendid way to spend a wild evening.

Sedbergh is fortunate to have so many talented musicians, but they are always looking for new recruits. If you play an instrument why not contact Donald and Shirley Smith on 015396 21196 or by email: yantethera@gmail.com in time to begin rehearsals for the next concert on 5th March.

GET FASCIA FIT & BAREFOOT STRONG

FASCIAL FITNESS®
by **BLACKROLL**



For everyday fitness and
sports performance

Monday 6pm
Barbon Village Hall
Friday 11.45am
Sedbergh Methodist Hall

1 hour @£7 drop-in or £30 for 5 Bring mat and water
Call me on 07795 063107, 015396 21303 or just come along.
Classes finish 20th Dec & Restart w/c 6th Jan.
See FB: FunKi Fascia & Fascial Fitness UK



FunKi Fascia - *move to your
groove*
(a dance version)
Tuesday 5.45pm - Sedbergh
People's Hall

SEDBERGH TOWN BAND

Keith Wood

Were you there? At our Remembrance Sunday Evening Concert? If you were then you've got to admit that we were fabulous. From Aces High to Colonel Bogey to Highland Cathedral. Brass Band music at its best, in fact any music at its best.

If you were not in the audience, then please note that there was nothing on the telly that could possibly challenge this and sadly you missed out.

Our annual Christmas spectacular will be on Tuesday 3 December. So don't miss out again. We will be presenting some new and challenging stuff including 'Fairy Tale of New York' and 'Driving home for Christmas'. The learner band will be playing. That old inebriate Father Christmas is almost bound to turn up (with his dozy fairy). So if you've got any, then bring your kids along. There will be a happy and convivial half time for pies, presents, laughs and crack.

Good old Sedbergh!



Sedbergh Red Squirrel Group

Local conservation
for **your** red squirrels.

Report sightings of
reds or greys,
or to Join / donate at

sedberghredsquirrels100@gmail.com
www.sedberghredsquirrels.org.uk



**K. W. Electricals
(Sedbergh)**
Tel: 07917 322626

Domestic & Commercial
Electrical Contractors

NICEIC
DOMESTIC
INSTALLER

TIM'S COLUMN

Tim Farron

I enjoy a coffee morning at the best of times. Everyone tends to be very friendly and there is cake. What more could you ask for?

But when I can combine a coffee morning with canvassing as I did the other morning in Sedbergh, well life doesn't get much better does it? Thank you so much all of you that I met there I had a great time.

I don't have as much to report as I would like as Parliament has been dissolved for the General Election. Since that time, more or less every spare minute I have had has been spent out knocking on people's doors. If I haven't got to yours yet I'm really sorry but you are most definitely on my list. The problem is I enjoy chatting to the people who open their doors to me. My team complain that I am so much slower than them when we all go out door knocking but I wouldn't have it any other way.

But I did try to fit in as much work as possible in Parliament during the weeks leading up to the dissolution.

I managed to get a meeting with the Justice Minister Chris Philp to

discuss the possibility of bringing a courtroom back to the area. Travelling to Barrow for court appearances takes a stupid amount of time for police and solicitors to say nothing of people accused and witnesses. This is a real concern when we learned that Cumbria has the third fastest growing crime rate in the country. So I was pleased when he agreed some of my suggestions were a possibility, but everything is now on hold pending the outcome of the General Election.

The Queen's Speech was a bit of a waste of everyone's time but I tried to try and get some use out of it by putting the case again for a radiotherapy unit at the hospital in Kendal. I told those MPs who bothered to turn up the heart breaking story of Liz who was diagnosed with skin cancer and had turned down the radiotherapy treatment the doctors had recommended as she couldn't face the long journeys down to Preston. The Health Minister clearly

Matthew Cook

Former Stonemason to York Minster and specialist in pre-1914 building repair

Stone repairs and replacement
 Re-pointing with lime mortar
 Stone cleaning
 Specialist surveys and consultancy

07791894782

www.cookmasonry.co.uk Info@cookmasonry.co.uk

does have a bit of a heart as he agreed to meet with me to discuss the issue so possibly some good came out of it.

Finally, I was really pleased to learn that after much pressure, from me and I am sure lots of you, Barclays had backed down on their plan to stop allowing their customers to take money out at the Post Office. Clearly community pressure really does work. It was bad enough that they closed their branches in places like Sedbergh but to start removing the services they provide through the Post Office was unforgiveable. I lost count of the number of times I wrote to their Chief Executive in the weeks after their announcement.

Anyway. December the 12th is election day. Whichever way you vote please, please do go and vote, whatever the weather and however dark it is. You don't want to wake up on December the 13th with a result you didn't want, regretting that you didn't do something to stop it.

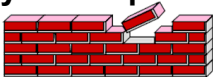
Whatever the result I hope you have a great Christmas and are looking forward to a great 2020.

Thanks for your support, Tim

RICHARD HOGGARTH

RN & HE Hoggarth Building & Repairs

40 years experience



All Types of Building Work
 No Job Too Small

Mini-Digger work undertaken

Tel:
 015396 20805
 Mob:
 07799 420433



SEDBERGH PARISH COUNCIL

Janey Hassam

This report covers items from the Parish Council meeting held on the 14th November 2019. The next monthly meeting will be held on Thursday 5th December 2019 at 7.30pm, and then 9th January 2020 at 7.30pm. The meetings will be held in the Committee Room, Sedbergh People's Hall, Howgill Lane, Sedbergh.

Millthorp Bridge

Members are aware of the huge concern in regard to the situation at Millthorp Bridge and the adverse impact this is having on residents in the area. Chair of Dent Parish Council – Juliet Hoggar, also attended to discuss – as the bridge is

a vital link into Dent and beyond. Whilst it is acknowledged that work is being undertaken to allow the bridge to open to light traffic, there remains concerns over use of Barbon (hazardous roads in winter) and an ongoing concern for residents when the bridge is closed for formal rebuilding, which is estimated as Spring 2020. Members wished to advise residents that it will continue to do all that it can to pursue regular updates from CCC Highways over the rebuilding work in the coming months.

Police Matters

Members are also extremely concerned with the level of rural thefts seen in the local area over the past few weeks. Also acknowledging the recent theft from a shop on the

**FIRST4
HOME
IMPROVEMENTS**

DAVID BAINES

FOR YOUR ENTIRE HOME IMPROVEMENT NEEDS

- UPVC Windows & Doors
- FASCIA BOARDS, GUTTERING, DOWN PIPES
- WET ROOMS, BATHROOMS
- GARAGE DOORS
- GARDEN ROOMS, GARDEN PODS
- KITCHEN
- REPLACEMENT GLASS
- LOFT CONVERSION

DAVID BAINES

015396 25346 07837 766 219

davidbaines@first4homeimprovement.co.uk

Main Street – urging all residents to be vigilant and to report any suspicious activity directly to 101.

Marketing/PR for Sedbergh

Members have sought additional information in regard to the proposed Marketing/PR Strategy and will await further details prior to any financial contribution.

Other Matters

Various other matters were discussed: including the current Casual Vacancy on the Parish Council, updates from the Amenities committee, including the planting of 10 trees at the playing field, Planning and the Finance Committees, including a draft Budget for 2020/2021. Along with a revised Vision for Sedbergh, written on behalf of the Sedbergh Economic

J. E. WILKINSON

BUILDING CONTRACTORS

Quality Craftsmanship

New Builds ● Renovations

Roofing ● Plastering ● Stonemasons

Lime Plastering & Pointing

WINNERS

YDNP BEST BUILDING DESIGN AWARDS 2010

NEW BUILDING CATEGORY

Tel: 015396 25531 Mob: 07989 197580

Partnership, for comment by Members, the approval of a £400 grant to the Chamber of Trade toward Late Night Opening. Finally, ongoing projects were discussed, including Jubilee fountain and Maryfell paddock area, where there was a notion to have some goal posts, as well as a proposed maintenance plan for the Tennis Courts at Guldrey.

Please note that members of the public are invited to our monthly Meetings where, as always, they are able to comment or ask questions. Public Participation is at the beginning of the Agenda and should anyone wish to speak, they would be welcome to attend.

Wishing everyone a Merry Christmas and a Happy New Year

If you have any thoughts/views on any of the above, or wish to contact Sedbergh Parish Council, please email me at clerk@sedberghparishcouncil.org.uk

Please also note that a full reference copy of all documents relating to meetings is held at

72 Main Street in the Parish Council Office, with agendas and minutes available online at www.sedbergh.org.uk

One to one tuition KS1 to KS5

- Maths
- English Literature
- English Language
- Drama
- Eleven plus
- Phonics & Numeracy
- Year 2 & 6 SAT preparation
- Dyslexia screening & support

Confidence building
Revision techniques

Specialised support available as one-hour sessions; our principal aim is to empower and enable students to be successful. Working closely with parents to understand individual requirements and support students' needs. Our students benefit from a friendly and motivating approach that builds confidence.



63 Main Street, Kirkby Lonsdale
LA6 2AH



twittwoeducation@gmail.com
Call Liz on 07946560280

GARSDALE PARISH COUNCIL Aggravation Harassment

Philip Johns

The unofficial bit: many times, in my reports and articles, I have berated South Lakeland District Council over their money grasping antics, and, in particular, their extortionate demands for money to inspect private water supplies. Garsdale Parish Council has always maintained that private water means exactly that, private water. SLDC should have no right to dictate to local residents how to extract, store and maintain their water supplies. Properties in Garsdale have been there for over 500 years, and with no mains water, residents have extracted water from becks, streams and rivers for five centuries for their own personal use. It is the residents' decision how they use that water, drink it straight, boil it first or bottled, it is the residents' choice and they should not be dictated to by some pen pusher at SLDC, whose opinion is different, as they have decided to follow an EU directive, which says that all private water supplies should be risk-assessed in the interest of the residents' health. But, surprise, surprise, in 500 years, our private water supplies have not killed anyone. SLDC, obviously, are looking at the money they can fleece from the residents if they adopted this directive. They have decided that they will charge residents £500 to do a risk assessment on the water supplies, even though the residents do not benefit one iota from them. It is cash straight into SLDC's coffers.

However, a further, very disturbing development occurred last week.

A lot of the properties in Garsdale are isolated with no close neighbours, and unknown visitors are looked at with concern. With the recent spate of previously rare rural crimes committed around Garsdale and Sedbergh, nerves are understandably a little frayed. So, imagine the consternation and disquiet one resident experienced last week to find a total stranger standing in her hallway. This particular property is high up the hillside and she sees no passers-by. When challenged, this stranger claimed she was from SLDC to inspect the water supply. She had no appointment and no invitation to enter the house. The resident asked her to leave the premises immediately but the stranger said she would return with a warrant. To the Council's knowledge, only Customs and Excise and the police have right of entry to private property and SLDC would have to go through the courts to obtain a warrant.

The resident has officially complained about this person's behaviour and was promised a formal reply within three days.

The Churchmouse at Barbon

New Road, Barbon LA6 2LL
015242 76224

Open 7 Days a week



Award Winning Café
Outside Terrace ~ Bistro
Deli ~ Newspapers
Licensed

*Bring your copy of Lookaround
for a complimentary coffee
with your lunch (once per person)*

1:1 Yoga in Sedbergh
With Karen - 07776 386918



COUNCILLOR'S CORNER

Suzie Pye

With the weather turning cold, wet, and wintry over the coming weeks and months, I thought it might be useful to share the following:

Potholes:

Road surfaces often suffer at this time of year as a result of wet and freezing weather, and potholes start to appear. Not everyone realises, but Cumbria Highways (Cumbria County Council) rely on members of the public to report these faults either online at cumbria.gov.uk or via the Highways Hotline on 0300 303 2992. Once reported, the work will be assessed and added to their current work schedule.

So if you notice a new or existing pothole, please do let them know. You can also report empty or missing grit bins in the same way.

Of course, I am always happy to report faults if you prefer (I am well practised!) just let me know!

Cold to Cosy Homes:

At SLDC we are supporting a free project to help residents struggling with cold and draughty houses and help cut heating costs.

Launched recently by Cumbria Action for Sustainability (CAfS), this new service offers free advice, energy-saving equipment and other practical help to householders.

Its advisors visit homes and ensure that energy saving measures are in place to reduce energy use and costs. Residents can save money on their energy bills through simple measures like LED light bulbs, draught exclusion and radiator reflectors – all offered free of charge through the scheme.

The eligibility criteria for the scheme is really broad and I am keen for people to realise that, if they have health problems, are on any sort of benefits, or have a relatively low income, they will probably qualify for this help. This includes anyone claiming Child Benefit – that's most people with children! A quick phone call to CAfS on 01768 210276 is all it takes to find out and to get things moving. Or visit www.cosyhomes.org.uk

As always, feel free to contact me with any issues you may have suzie.pye@southlakeland.gov.uk
07584 528 462

I wish you all a very Merry Christmas and a Happy New Year!



AUTUMN'S RHYTHM

Joan Abbott 2011

Wet and windy, wild and drizzly
Spitting past our streaming windows
Wild, bent branches struggling,
straining
Holding on another year

Leaves ripped off before they've
reddened
Stealing Autumn's pretty palette
Leave us something to look out for
Colours bright before the snow

People rushing, hats held tightly
Collars up and buttons fastened
To the school gates quickly dashing
Get inside no time to play

It's the time to do the housework
Leave the garden and the mowing
Stay inside and keep on working
Leave outside the cold grey day

Down the windows rain runs quickly
Distorting views of cold, wet streets
Shut it out; don't think about it
Snug inside your cosy room

Listen to the wailing wind sound
Haunting in its passing calling
Makes us think of ghostly happenings
Let some music cheer the day

Cumbria Stove Centre

Supply and installation of
wood, coal and gas stoves
Flue and chimney lining services
Inglenook specialists

Fully qualified and experienced
Hetas engineers

01539 821061 (day)

015396 25227 (evening)

SHOWROOM:

34a Main Street, Staveley, Nr Kendal



GREAT QUALITY & SERVICE

smart
Design and Print

Call us today: **01539 620788**
Email: office@smartdesignprint.co.uk

FREE local delivery for orders over £20

Cup of tea and phone line chatter
Internet and telly watching
Keep your mind on other matters
Till you're forced to go outside

Get the children from the school gate
Rush them home and dash inside
Nice hot drink and chocolate biscuit
Prepare tea and wait a while

The rain stops and clouds part gently
Spreading out in long drawn lines
Sun appearing, settling slowly
Giving out it's warming glow

Then we see tomorrows promise
Brighter, better, finer day
We forget today's wet wind set
See instead the sunset's rays



“WHAT3WORDS”

Rosie Dixon

“what3words” is a very accurate way of pinpointing a location, the country being divided into 3 metre squares. Many of us live in communities with no street names, we rely on using postcodes to find us. However, as the owners know at Bainsbank, the LA6 2NG postcode usually sends couriers intended for Middleton House down to them. If we needed an emergency service, that misdirection would cost valuable time. So, when what3words contacted me yesterday, this seemed to me to be the perfect answer to our scattered locations and would be extremely valuable if an incident occurred on the fells or alongside a river/beck.

It is free and very quick to download on to a smartphone. It is amazing to think that there are enough 3 word combinations to cover all the 3m squares in the UK. For example, two of many for Middleton House are ‘encourage.reactng.sheds’ and ‘swerves.widest.timed’ and for the bus shelter at the top of School Lane ‘customers.underline.departure’ which I think is, coincidentally, quite appropriate. For those of you with businesses and holiday lets these 3 word addresses could be added to your business cards and websites.

In case you're interested, there's a number of ways that Parish Councils and the general public can use the system for free. Would love to get

Family run 17th Century
Coaching Inn with restaurant,
rooms & bar. Inspired by the
landscape in flavour & design.
Relax, indulge & tune-out.

+44 (0) 15396 20264
bookings@theblackbullsedbergh.co.uk
theblackbullsedbergh.co.uk

The Black Bull,
44 Main Street, Sedbergh,
Cumbria, LA10 5BL

THE BLACK BULL





Drop in meetings for anyone struggling with bereavement

*Tues 3rd December & Tues 17th December
10am - 12 mid-day*

Cornerstone Community Church

Join us for coffee and a chat

For further information or to arrange a one to one appointment please call the Grief Share number

your extra thoughts, but a few ideas might be as follows:

- Reporting the exact location of crimes/incidents to the Emergency Services and local authorities in your area (Cumbria Police and Cumbria Fire and Rescue are all set up to accept a 3-word address on a 999 call)

- Listing a 3-word address on signs and websites to help people find local points of interest and attractions

- Encourage people to use 3-word addresses to help guests find self-catering/ holiday cottages (eg sending them out on Airbnb / Tripadvisor bookings etc)

We've put together loads of resources to help explain what3words to people on our website <https://what3words.com/about-us/>

Using what3words: Cumbria Police and Cumbria Fire and Rescue are now using what3words. This means if you get into an accident and are having trouble describing where you are (if you're out walking, for example), you can use the app to tell them your exact location. what3words has labelled every 3m x 3m square in the world with an address made of

three random words from the dictionary. For example, the 3 word address of Nelson's Column in Trafalgar Square is this.fantastic.notes All you need to do is download the free what3words app. You'll be able to see and share the 3-word address of your current location and also to find out the 3-word address of your home (by typing in your address and selecting the square containing your front door). If you're renting your property on Airbnb or any other accommodation sites, you can also use it to make sure guests don't get lost by just sending them the 3-word address of the front door/property entrance (especially if your postcode goes to the wrong place!). Visit what3words.com or download the app to find out more.

Let me know how you get on!

Please do drop me a note or give me a call if you have any questions or need more info! My number is 07542786989.

SEPTIC TANK EMPTYING

Fast efficient Service
Very competitive prices

SKIP HIRE

Ideal for rubble, soil,
builder's waste and stone

Ryan Simpson

07766 971 167

015395 68318

rysimpson@live.co.uk

SEDBERGH COMMUNITY SWIFTS

Tanya & Edmund Hoare

Why not try our Christmas Quiz this month? What do you know about these amazing birds? And what do you know about swifts in Sedbergh? The prize will be one of our attractive swift mugs, designed especially for us, featuring the Sedbergh skyline.

Submit your answers to the email address below by 10th January. In the event of a tie, the first one drawn out of a hat will win.

1. Although they may appear similar, swifts are completely unrelated to swallows and martins (Hirundine family). To what family of birds are swifts most closely related?

2. How many broods does the Common Swift have in a year?

3. What is the Latin name for the Common Swift that comes to this country?

4. How many swift bricks have been installed in the gym extension of the People's Hall?

5. How many swift boxes have been put up on buildings in Main Street?



- Project Management
- New Builds
- Extensions
- Roofing
- New Fitted Kitchens
- Ground Works
- Plant Hire
- Drains

Unblocked/Cleaned/Repaired

Contact George on:

Tel: 015396 21287

Mob: 07977514229

Email: info@gjbainesandson.co.uk

Web: www.gjbainesandson.co.uk

6. This year, how many chicks were successfully raised by the swifts in the boxes at Settlebeck School?

We send very best wishes for the festive season to all our readers while we are thinking of our swifts enjoying the warmth of Africa.

To contact SCS: email ta.hoare@btinternet.com or ring 01539 824043



OCTOBER WEATHER

Brian Wright

Yet another dampish month with a total of 3.75inches (95mm) of precipitation. Rainfall was fairly well scattered with only a 4 day long dry spell. It was still fairly mild with all maximum temperatures reaching the 50sF (10+C) with a high of 58.5F (13.8C). We actually had minimums below freezing on a couple of nights with a low of 29.1F (-1C). Wind chill took a couple more nights below zero. With pressure on the low side it resulted in a breezy month with a maximum gust recorded as 20.6mph (33.15 kph)

The mild weather meant we had still more wasps to contend with. We have killed dozen indoors. How they

get through an apparently closed window I have yet to find out. I shall have to deal with the nest during the winter.

After saying I hadn't seen any geese fly through, two skeins of about 60 in each went through on the next 2 days!! Our winter thrushes have been arriving in dribs and drabs but the flocks have been largely fieldfares. Leaves are falling dramatically with every gust of wind.

Most of the locals have let their tups go. Mine go next month. My sheep have enjoyed eating windfall apples. They have eaten far more than me this year!

Rare visitor to the garden has been a goldcrest.

The Cross Keys Temperance Inn

Cautley, Nr Sedbergh

Tel: 015396 20284

Alan & Chris Clowes offer you a warm welcome



We are open daily for home cooked food,
(a particular favourite is Ham 'n' Eggs)
and offer an extensive menu for
residents and non-residents.

Our two guest rooms are both en-suite
and we can boast one of the finest views of
Cautley Spout and the Howgills.



Seasons greetings to all our loyal customers and friends;
We hope you all have a happy and peaceful Christmas
and a healthy and happy New Year.
Alan and Chris Clowes & staff at The Cross Keys Cautley.



Closed Mondays unless a Bank holiday.

Opening Hours: - 9am to 4.30pm Wednesday to Sunday inclusive
Thursday, Friday & Saturday open to non residents from 6.30pm for Evening Meals
but prior booking essential

DECEMBER FAMILY MUSINGS

Sarah E Woof

My dear old mum always wore her red checked coat on bonfire night saying it was like wearing a blanket. She always said that winter was truly here once Nov 5th had passed, sometimes it came a day early hence the very warm coat! We would wander to church bridge to see the bonfire down near the river, it's cargo reaching above the parapet of the bridge as it's flames licked higher and higher and sparks and stars burst forth into the darkness. We stood around chatting to friends and probably took our turn to que in the back of someone's farm trailer to buy a hot dog. Then the fireworks to watch before wending our way homeward, us likely shivering and mum warm as toast.

I see in a magazine that one can now purchase a 'huggy blanket' - the idea being, you feel the need for a hug and wrap this blanket around you and you feel as if someone is hugging you.?? Give me a real breathing person to hug please, preferable to a piece of material however well presented.

December...Advent. This year I am following an activity book called "Wild Advent" which includes things to do in the dark, when it is cold, with others and on your own and hoping to involve the rest of the family in this. So if you see me (us) peaking at frosty patterns or tracing icy cobwebs or doing anything unusual don't ring for help but come and join in- then again doing unusual things is my byword so it won't seem at all different will it!

Just yesterday a friend told me snow is expected at the weekend,



Throughout the Christmas and New Year period, our prices remain the same - 24 hours a day 7 days a week

4, 8, 10, 12, 16 seaters available
Shopping • Nights out
Short & long distance
Contracts welcome
Airport transfers at fixed rates



Please call now to pre-book your taxi / minibus!
10% OFF with this leaflet

www.ldphtaxis.com • info@ldphtaxis.co.uk

Find us on Facebook Download on the App Store ANDROID APP ON Google play

01539 87 99 69 • 01539 62 81 31
Gatebeck Business Park
Gatebeck, Kendal, LA8 0HS



that being the W/E after bonfire night, that was something else I remember from my past, snow often came soon after 5th Nov. Anyway on asking where the snow was forecast I was told 'north pole'. I replied that if I wake to snow on Saturday I will know I have relocated in the night!

Christmas – cosy, contented, family orientated.... really? For many I know that will be only partly true because of loved ones who are no longer with us this festive time. My prayer is that as we miss them, we are reminded of how much they loved us and then of some of the amusing things they were part of. Then we step out to create new memories as we celebrate the coming of unconditional love to the world. Merry Christmas everyone!



Valerie Hinde

Chartered architect and designer

New build and extensions
Refurbishments
Conservation
Listed buildings
Planning applications
Building regulations
Community
Commercial

49 Robin Lane, Bentham, LA2 7AG
Tel 07503 731818 015242 61407
valeriehinde@gmail.com
www.valerie-hinde.co.uk

**FARMLAND WANTED
TO RENT**

**Farmland wanted to rent
long term
Sedbergh and surrounding
areas**

**Can start immediately
Contact Gary
015396 21547**

JANUARY FAMILY MUSINGS

Sarah E Woof

Happy New Year to all! I do so appreciate the lovely comments about this column, I enjoy my "writing", be it for this monthly column or the group I go to, short stories or the novel I am writing. It is at times 'an escape' at others it is like a warm hug from the past, or it stretches my mind to find new ways to describe someone or something. I want my writings to leave my readers feeling happy, sometimes a little sad but never cross unless at some injustice I portray.

How did Family Musings start? Back in early 2000 's a lady called Joan Stockdale wrote a column in Lookaround and my mum kept saying that I should write one. I did and the then editors accepted it, readers enjoyed it and so we carried on. There was a little blip a year or two ago and it was missing from the pages for a few months and only

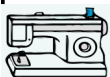
Temptations Craft Boutique

31 Main Street, Bentham LA2 7HQ

015242 61868

email temptationsbentham@yahoo.co.uk

- Over 500 Patchwork cottons
- Fabrics for Dressmaking
- Haberdashery
- Wool and knitting supplies,
- Classes and workshops, see website for details
- Agents for Brother Sewing Machines



www.temptationsbentham.co.uk

available to be read in our girl's cafe in Sedbergh. But some readers missed it and complained (thank you folks!) and so Family Musings was reinstated.

So, here we are 2020. How many weeks before we get all the new calendars up and stop writing 2019 on cheques and letters. Yes, I still do both of those, strange isn't it, and I rarely shop on the Internet preferring to see before I buy. I try to support local businesses and am a fan of using cash. Guess some of you think I need to catch up with technology! Possibly so. but when we all moan about a 'cashless society' and the closure of smaller shops, please let's not be part of the cause.

Happy New Year! Celebrate in style, whatever that style may be. F M will be back in February. Thanks folks.



DENTDALE - HEAD TO FOOT

Mike Steele

Unfortunately a short report this month as we had to cancel the November meeting at very short notice, so we are hoping to run Freda Meakin's talk early in 2020.

We have our customary Christmas Jacob's Join meeting on December 6th, which I hope will give us strength to undertake the 'Over 60's Dentdale Christmas Lunch' on the 7th!

For further information call Mike Steele on 015396-25054, m: 07813-806209 or e-mail mds@hallbankcott.co.uk

SEDBERGH LADIES NFU COFFEE MORNING

Caroline Sandys-Clarke

Our coffee morning on Wednesday 13th November in aid of St John's Hospice, was very well supported, raising £366.40 for the charity. There was a very well stocked cake stall, books, an excellent raffle and the hospice had a stall selling Christmas cards and puddings. We were pleased to welcome Tim Farron MP, who stayed for quite a while enjoying a cup of coffee and a chat. Thanks to all who came along and helped us raise this magnificent amount.

Howgill Upholstery

*Traditional Re-upholstery
With a lifetime of experience*



*Chairs, Dining Chairs, Stools
and Occasional Furniture
Cushions Refilled*

The Barn Howgill Lane Sedbergh
015396 20733

neil@howgillupholstery.co.uk



SEDBERGH SCHOOL NEWS

Karen Bruce Lockhart

Various expeditions took place during the half term break. The runners trained in the Alps including running down the Aiguille Percee. Rugby players took part in courses and were in Dubai. The sailors were busy sailing on Loch Ness. There was a classics trip to Italy included the Vatican and other Roman sites, Pompei and Herculaneum.

The School Fireworks took place on 5th November on a cold but still and clear night - helped by hot chocolate.

The School held its moving Remembrance Service on a brilliant morning on the Cloisters. They also assembled at the Cloisters in the rain for two minutes' silence on Monday

11th November. Each House held its own Remembrance Service as well.

The Easter and Summer courses are open for booking now.

An article by Richard Negus about his visit to the School shoot and the hard work put in to keep it going by the pupils appears in the Shooting Times

Jasper de la Riviere was born on 23rd October.

The Eco squad visited North West Waste Management to learn how our waste is dealt with

2Lt M Jackson, Duke of Lancaster's Regiment, spoke to Cressbrook House at the Prep School on the subject How and Why Do We Remember? Myles Ripley spoke to Beale House about cardiopulmonary resuscitation



Footloose Travel

"Travel with Integrity"

Tel: +44 (0)1943 604030

info@footloose.co.uk

Skype: footloosetravel

The People's Hall

Howgill Lane, Sedbergh LA10 5DQ

Available to hire for all kinds of functions

⌘ Parties ⌘ Meetings ⌘ Concerts ⌘

⌘ Wedding Receptions ⌘ Dances ⌘

⌘ Theatre ⌘ Discos ⌘ Lectures ⌘

Availability calendar and forms online at

sedberghpeopleshall.org

Or at Sedbergh Information Centre
72 Main Street

The "Operations" Department of the Bursary (cleaning, catering, ground staff etc.) has moved into the old Baclays Bank building

Robertson House have acquired Huffy, a pygmy goat.

Music and Drama - The Scholars Concert held on the afternoon of 10th November starred 17 performers. The four performances of Oliver! will have taken place by the time this is published

Hockey - The Girls are Country Championships at U14, U16 and U19

Bo Madden (aged 14) has been included in the Girls' U16 England squad. Chess Cooke is included in the U19 superhockey squad

Equestrian - OS Storm Straker (14-16) won the Open Novice Section at Burgham International Horse Trials

Shooting - OS Angus Strudwick (16-18) won gold in the air rifle team match at the Junior International at Bisley

Running - OS Andrew Murray (89-94) completed the Bob Graham.Round (55 miles and 42 Lake District Peaks)

Two Prep school boys, Barker and Dodgson, qualified for the U13

Cumbria Trials at the South Lakeland District Cartmel Cross Country Trials

Cricket - Last year's cricket captain George Hill was named Academy Player of the Year by Yorkshire. Year 13 pupil Matthew Revis, this year's (ie 2019-20) captain played for Yorkshire's first team against Kent at the beginning of this term.

Netball - The Girls are U14, U16 and U19 County Netball Champions looking forward to the Regionals in January.

Rugby - Half term started with an exciting match against Blackrock College from Dublin. Blackrock were winning by 3 points until the very last minutes of the games when Sedbergh scored a try and won 26-23 to great excitement. They have played Blackrock four times before since 1952, drawn two, lost one and won one (1982). They won handsomely against Lancaster RGS on 9th November. Current pupil Oli Melville was named in the 40 man England U18 development squared for the October half term training camp. Carwyn Tuipolotu, age 17 has been chosen for the Welsh U20 squad.

Painting and Decorating

- Internal and external
 - House makeovers
- to attract buyers*
20 years experience
Excellent references



MB Designs

015396 23239

0770 99 77 619

ACUPUNCTURE

BAcC Member
www.acupuncture.org.uk



Experienced practitioner

*Acupuncture can be helpful with
many different conditions*

June M. Parker

Dip Ac, MBaCC

49 Bainbridge Road, Sedbergh
Tel: 015396 20972

The Prep School held a Rugby Festival on 13th November involving 26 teams and 11 schools

Forthcoming Events

The Advent Carol service is at 5pm on Sunday 8th December and everyone is very welcome. This is sung by the choir with congregational participation and is in effect a "pre-run" of the official School Carol Service which only has room for parents.

Term ends after the official Carol Service (parents only) at 3pm on 12th December

The Lent term begins on Sunday 5th January at 7 pm

Half term begins on Friday 14th February and lasts till 23rd February

The Rawthey Run is on 23rd January but no date has yet been set at the time of writing for the Morgan Run



SETTLEBECK – " A NIGHT TO REMEMBER "

Myles Ripley

I have just returned from Settlebeck's celebration of the arts entitled "A Night to Remember" which blended memories from the Remembrance weekend with the hall decorated in the 1940s and a medley of music and drama from those times. (I can't not mention the poems that were fastened to the church fence which caught so many peoples' attention during the week of Remembrance).

I was greeted with a cream tea (those who know me will know that that is bound to make any evening a success!). The hall had a fascinating collection of art pieces based round individual memories of people in the district who had been affected by the war with a big mural of red poppies at the rear. We were entertained by various musical ensembles with singing, instrumentals and, particularly unique, a "Last Post" played on euphonium as part of the finale to the evening. The main drama piece was "The 39 Steps" played by a particularly confident cast – the Scottish accent of the farmer was notable, as was the strength of the

Robert Powell

Website Design & Management

Tel: 20482

www.robpowell.co.uk



characterisation of Richard Hannay himself. Climbing out of windows, crossing bridges, clambering along the outside of a train – all pulled off by simple stagecraft but particularly effectively.

Settlebeck is our very own school and it may be small but, as the deputy Head said at the end, it outperforms its size by a long way. Congratulations to all who were involved.

BOXES OF HOPE CUMBRIA

Pam Dent

Thank you to everyone who supported this year's appeal in any way. By the time you read this, 162 shoe-boxes from Sedbergh and district, along with thousands of others from across South Lakes, will have arrived in Romania to be given to some of the country's poorest children in good time for Christmas. Same time, same place next year?

Happy Christmas! Craciun fericit!

PARKIN & JACKSON MONUMENTAL MASONS

14 Appleby Road Kendal LA9 6ES
Tel 01539 722838



- New Memorials
- 2nd Inscriptions
- Cleaning and Repainting
- Renovations
- Memorials designed to your personal specifications

Visit our showroom
or phone for a brochure

parkinandjackson@btinternet.com

www.parkinandjackson.com

Contact KEVIN BATEMAN

DALTON WOODLAND BURIAL GROUND



Natural Woodland
Burial Ground



"Return to the Earth, naturally"

www.daltonwoodlandburial.co.uk
Burton-in-Kendal: 01524 782442

SEDBERGH W.I. REPORT

Moira Folks

'The Ladykillers': not a job description of Sedbergh WI members but definitely something a dozen of them enjoyed watching at the Theatre by the Lake in Keswick on October 19th. It was a very funny play in this version by Graham Lineham, enhanced by an excellent set which, together with a much-appreciated lunch before it at Cocklakes Farm Shop, made for an extremely enjoyable outing: a big thank-you to Ellen for arranging it! Ellen has also organised a visit by a member of the Theatre by the Lake team to speak at one of our meetings in 2020, so we're looking forward to that.

On October 10th, a few members of the group attended a meeting of the Cumbria-Westmorland WI Federation at Selside to hear Marcia Reed-Fotheringham, the new High Sheriff of Cumbria – a charismatic London-born black American woman from New York! – speaking about her fascinating past career and her new role in Cumbria. She was an impressive speaker.

Congratulations to our Quiz Team of Sandra Gold-Wood, Den

ABLE MEMORIALS

Monumental and Architectural Masons
New Memorials and Additional Inscriptions
Showroom with over 30 Memorials on display at
3 Wildman Street, Kendal

Please call for a brochure or free estimate

on 01539 735583

or 07779 025745

Home visits available by local mason Edward Waller

Chambers, Pam Drower and Stefanie Downes who won the local WI Federation Quiz Cup, beating teams from miles around, at the White Hart Social Club in early November.

The WI year turns full circle in November when we hold our Annual Meeting. Valerie's secretary's report reminded us of the many interesting speakers and trips we have enjoyed in the past year. After four years in office, Sue Kernahan resigned as President on November 13th and Ellen Morrison bravely stepped up to take her place, to the gratitude of all! Valerie Welti was confirmed as Secretary and Sandra Kemp as Treasurer. Ellen remains as Programme Secretary and Moira

Folks is again responsible for organising the book club and writing Lookaround reports. Sue Kernahan deals with the WI membership communications system while Sandra Gold-Wood continues as a much-valued committee member. Elizabeth Saunders now brings her talents to the committee, which will also be joined in January by Angela Dixon when her WI membership is transferred to Sedbergh WI from her previous WI in Surrey. We are delighted to have her with us.

The book club met at Pam's home at Farfield the next day, enjoying her lovely view of the Howgills once again. Pam's home is a far cry from the 'Home' described by Amanda

Berriman in her novel of that name, the subject of our discussion. Written in the voice of 4-year-old Jesika, abandoned by her Polish father along with her mother and sick baby brother Toby and forced to live below the poverty line in dangerous accommodation in London, we see the world as Jesika sees it with confused understanding of adult vocabulary (this causes us some amusement when 'radiator' for example is transcribed as 'rainy-hater' by little Jesika!). This childish vocabulary was annoying to some at first but it was so well sustained that we were completely hooked by the involving storyline and Jesika's developing identity, her fears and bravery: the average score given was just under 8/10. Pam's cakes were delicious – especially the Italian one she had told us the day before seemed to be a disaster! Thank you, Pam!

There will be no meeting in the People's Hall in December as we will be enjoying our Christmas Dinner at Thorns Hall instead. The next meeting in the People's Hall committee room will be on Wednesday 8th January at 7.30pm when we will be holding an upcycling craft workshop using old socks and tee-shirts: please bring some along with very sharp scissors to cut them into strips! Alternatively, come with some upcycling ideas of your own! It promises to be an entertaining social occasion.



J J MARTIN

Funeral Directors
Established 1869
Long Lane, Sedbergh

Brian Goad 015396 25334
Edward Waller 015396 20130

Complete Funeral Service
Day or Night

Chapel of Rest

DENTDALE W.I.

Thelma Belfield

November is the month when we hold our Annual General Meeting to elect a new committee and president for the coming year. This meeting is very focussed on business matters and so we do not have an external speaker at the meeting. We do however have social time and this year our programme organiser Jackie Fisher had planned a Quiz based on 'film titles' which we all are looking forward to once business is completed.

In true November spirit, as we made our way to the meeting, the weather was cold and damp, thankfully not as wet as some areas in the East Midlands where serious flooding had occurred.

Sales from our monthly mini market have diminished considerably over the autumn period and it had been decided that a relaunch was necessary and many of us had responded in true WI style. The sales table was laden with many different items. Marion, who is one of our very talented crafters had made beautifully decorated Christmas tree baubles, unique designs and very much less

expensive than in the shops. An opportunity to do some serious Christmas gift shopping.

Our evening began with a short presentation from Scott Thornley in his role as a member of the Dent Run committee. Scott had come along to ask us once again to give support to the annual Run by helping to provide the teas given to all the runners taking part. The funds raised from the event are donated to Dent School. Year on year with central funding being reduced, local fund raising provides a much appreciated addition of the budget and ensures the local school continues to flourish. As always we agreed unanimously to support the event and assured Scott of our help.

Institute matters were dealt with next and Kate our treasurer reported on our recent charity family quiz night which had raised £175 to be donated to North West Air Ambulance and the Rawthey Project. The amount raised was much lower than we had hoped and it was agreed that we would add to it by doing the Smarties Tube Challenge again. This involves all of us being given a full tube of Smarties (eating the Smarties - that's the hard

Carole Curran BACP
Counsellor/Therapist

(over 30 years experience)

Offering counselling services in the following areas:

Person Centre. Brief solution therapist, specialising in bereavement counselling and depression.

Also offering health and nutritional advice.

Contact 07513031385

bit) and returning the tube three months hence, filled with coins. Proceeds from our mini market stall will also be donated to the charity fund over the same period.

Jackie confirmed that our Christmas party lunch at The Pheasant in Casterton was all organised and asked for volunteer car drivers on the day.

The final item up for discussion was to have been about Climate Change. Dorte-Lis had recently attended a Federation event and wanted to share her thoughts and some ideas about what we could do individually and as a group, to help make a difference to the rapidly increasing threat to our planet. Sadly Dorte-Lis had been unable to be with

**Craig
Chamberlain
IT Services**

**Problem with your computer?
Let me take care of it.**

www.craigchamberlain.it
info@craigchamberlain.it

Windows 7 is "Going End of Life"

If you still have Windows 7, you should plan to upgrade or even replace your computer before 14th January 2020.

I can upgrade your computer or help you choose a new device, and migrate your files to your new computer or the cloud.

07526 825 153

due to illness so this will be revisited early in the new year.

The formal process of the AGM began with a warm welcome to Mrs Emma Richardson who was to act as our independent teller for the election process. Annual reports were presented from the treasurer, the committee and Chris Taylor, our representative on the Dent Memorial hall committee, also gave her report. The final report was from our president Sue Owen who thanked individual members for their hard work through the year, not only on the committee but to all of our members who individually work and support within our membership to help maintain the true philosophy of the Institute. Gill Newport gave a very

heartfelt vote of thanks to the committee.

Reports all completed, proposed and adopted as necessary it was time to elect the committee for the coming year. Emma carried out her duties as teller very efficiently and the outcome was, that as there were no new nominations the existing members of the committee would remain and Sue Owen was re-elected as President.

All business finished it was time to relax, have a cup of tea and some delicious cake (the coffee cake was to die for, we do have some fantastic cake bakers in our group) and have a go at the Quiz. It was great fun, and for a WI meeting I had never known the room be so quiet whilst we all racked our brains for the answers.

J. N. & E.

Capstick

INSURANCE CONSULTANTS

**36 Main Street, Sedbergh LA10 5BP
Tel - 015396 20124 Fax - 015396 20791**

Market Street, Kirkby Stephen, CA17 4QT
Tel - 017683 72285 Fax - 017683 72346

www.capstickinsurance.co.uk

HOME & MOTOR INSURANCE
FARM & BUSINESS INSURANCE
LET PROPERTY & HOLIDAY HOME INSURANCE

SMALL ENOUGH TO CARE, BUT BIG ENOUGH TO COMPETE

Open until 7.00 pm on Wednesdays
to help with all your general insurance needs.

*J. N. & E. Capstick Insurance Consultants
are authorised and regulated by the Financial Conduct Authority*

Treadwell Flooring

Established Family Business since 1999



*Contract & Domestic
Extensive Range of Floor Coverings
Carpet, Vinyl, LVT and Wood
Carpet Cleaning Service Available*

T: 015396 21175 • M: 07795 598 913

Despite the misgivings of many of us feeling we knew very little about films, once we started memory kicked in and the answers came. Team Sue, Rita and Anne were the winners with 37 correct answers out of a possible 50. It was Rita's night as she had also won the yearly Competition Cup. Congratulations to Rita. Raffle prize winners were Barbara and Anne.

It may have been an intensive business focussed meeting but it is all part and parcel of keeping our organisation fulfilling its purpose to provide friendship, education and social opportunities for women. As always we give a warm welcome to visitors and new members.

B4RN FOR MARTHWAITE AND HOWGILL

Martin Stockdale

Great news for at least one part of the area: the Howgill project is now complete! Due to the tremendous efforts of Mike and Stef, and the support of all the landowners and residents in the area, every property in Howgill either has a B4RN connection now or can take a connection whenever they want to.

The Howgill volunteer team is now standing down and going back to their normal lives. If you live in Howgill and want a connection, please visit the B4RN website and select "Get B4RN" to be guided through the process.

In Marthwaite, things are getting close to finished as well. In the last month the connection through to Sedbergh has been completed. This not only allows the connection of people in the south of Marthwaite, it also ensures a much more resilient service for the whole of B4RN-land by providing a second link across the Lune.

As I write this, Brigflatts connections are being finished, and hopefully by the time you read this the only piece of work outstanding will be to connect 6 properties at High Oaks where the digging needs to be carried out by road work contractors.

If you're a Marthwaite resident and you want a B4RN connection but haven't already got one, please make sure you've registered your requirement (b4rn.org.uk/postcode-checker/) and arranged your house kit installation. Please feel free to contact me (b4ws@gmx.co.uk) for more advice.

B4RN FOR SEDBERGH TOWN

Douglas Thomson

B4RN's broadband service is coming to Sedbergh Town. A rather bold statement but after, some months and many meetings, the town as a whole is being put forward for inclusion in the Government's Gigabit Voucher Scheme. If the bid is successful, the amount of investment needed by B4RN for the project to go ahead in the town, will be considerably reduced.

B4RN's service for the area around Sedbergh is a 'no brainer' as the BT service in some locations hardly allowed the sending of emails and any video streaming was impossible. In parts of the town BT's service is currently adequate for household use

but the upload speed makes it poor for businesses. Also, the future is not rosy for broadband speeds which will be reduced with greater use of the system by video and film streaming organisations, Sky and the so called 'internet of things'. B4RN's hyper fast service will be unaffected by these innovations and will provide a very fast upload speed that is much needed to retain and attract businesses in the town.

Now more than ever is the time to contact me douglas@dathomson.co.uk if you would like B4RN service in your property. Without volunteers to assist with this project parts of the town may miss out on this opportunity.

**McGarry
& Co** SOLICITORS

*Feet Up &
Family Time*

*Your Legal
Companion*

- ESTATE PLANNING
- PROPERTY & RURAL LAW
- FAMILY LAW

Offices At:

Sedbergh

Barnard Castle

Hawes

Leyburn

mbmcgarry.co.uk

e.office@mbmcgarry.co.uk

t 015396 223 40

LA10 5AB

t 01833 600 160

DL12 8EQ

t 01969 666 290

DL8 3QS

t 01969 621 230

DL8 5EH



Tel: 015396 22038
Mob: 07771824958
E: info@mkconversions.co.uk

All types of building work undertaken

- Extensions
- Barn conversions
- New build
- Restoration work
- Building, joinery, plastering, tiling, roofing
- Topseal flat roofing approved installer



FUNDED ELECTRIC VEHICLE CHARGE POINTS

Sedbergh Environmental Network

Cumbria Action for Sustainability and Charge My Street would love to hear from venues that could host a charge point for electric vehicles (EVs). Using government grants, they want to find two hundred sites across northern England.

The chargers that will be installed are 22 kW 'fast charge' points – not the fastest, but still pretty good. Community buildings, private businesses with a forecourt, rural hotels in a village and housing association areas are all examples of places that might fit the bill. In fact, there's potential for any car-parking space where the owner is happy for the public to park an electric vehicle, for at least part of the time, even if just overnight. It would help people whose houses don't have parking, as you can't run a charging cable across the pavement or street.

The host might use the charger for their own staff or customers' vehicles during the day, and then make it available for the public out of hours.

All booking, charging and billing will be organised through apps to be developed as part of the project.

The project, which is still at an early stage, is being managed by Charge My Street; go to chargemystreet.co.uk to register your interest online now and one of the project team will get back to you to discuss eligibility. Tell them we sent you.

JHS Joinery

Qualified and Experienced Joiner
Providing a Quality Service

- Laminate Floor
- Spindle Balusters
- Internal & External Doors
- Wall & Floor Tiling
- Flat Pack Assembly
- Any small jobs considered

Jim Speak
Carpenter Joiner

Tel: 07896 596976

jim.speak1949@gmail.com



WDB BUS TIMETABLE CHANGE

Jock Cairns, Chair, WDB

Following a recent review of our services, some Western Dales Bus timetables will be changing from 16th December to help us keep to time more easily. The main differences will be as follows:

Saturday's S1 Kendal Connect from Dent Station, Dent and Sedbergh:

- Four return journeys each day from Sedbergh and three from Dent
- New timings
- Final return journey to Dent station will run during Summer Time only

Tuesday's S3 Hawes Hopper from Dent and Sedbergh and Garsdale:

- The service will run all winter

- Last return journey from Hawes will terminate in Sedbergh.

- New timings

Friday's S4 Kirkby Stephen Connect from Dent and Sedbergh:

- Last return journey from Brough and Kirkby Stephen will terminate in Sedbergh.

- New timings

Thursday's S5 Kirkby Stephen Shopper to Kendal is unchanged.

For full details of the new timetables please see the versions printed at the back of this edition of Lookaround. Printed copies are available at the Sedbergh Information Centre, on the buses and on our website at www.westerndalesbus.co.uk.

Travel with us on the **Western Dales Bus**

Winter timetable starts 16th December

New timings on
S1 Kendal Shuttle – Saturdays
S3 Hawes Hopper – Tuesdays
S4 Kirkby Stephen Connect – Fridays

See article on this page and timetables at the back of this edition (pages 93 & 94) for more details

Printed timetables on the buses, from Sedbergh Information Centre and at <http://www.westerndalesbus.co.uk>

DALESMAN VETERANS' OFFER

Michael Garnett

We are proud to build on last year when we accommodated and fed 7 homeless veterans/dependents over the Christmas period. This year we have allocated all of our rooms, plus 2 kind donors have donated their holiday cottages to increase capacity. Working alongside a number of military charities, we are identifying veterans nationwide.

In total we anticipate that we will accommodate over 20 homeless, disadvantaged and vulnerable veterans over the Christmas period. The veterans will arrive at lunch time on Christmas Eve, be introduced to each other and have a warm, hearty Sedbergh supper. All of them will

have a small bar tab and they will be encouraged to enjoy a warm Sedbergh welcome.

My (Mike) family will cook a full Christmas lunch for them at 1500hrs in the Dalesman Country Inn on Christmas Day and we are inviting local residents and businesses to donate Christmas presents, especially for the children. The group will take part in the hunt meet on Boxing Day before receiving a Dalesman Christmas hamper and driven back home.



New Years Eve at the Dalesman

We have a five course taster menu that has been created by our chefs having been given the proposition of using as many local ingredients as possible

Offering a glass of sparkling on arrival

We ask you to join us with background music from Joseph Kirkbride playing a range of 60's to 90's covers.

We ask an all inclusive price of £45 per head.

Please call and ask for a copy of our menu with booking times from 7pm to 9pm.

Our usual times of serving our other menus are still available which are -

Breakfast and brunch 8am to midday

Lunch and evening menus midday to 7pm

015396 21183 and email info@thedalesman.co.uk

SEDBERGH DEMENTIA ACTION ALLIANCE

Myles Ripley

Many of you may be aware that Sedbergh has a Dementia Action Alliance and we are trying to become a "Dementia Friendly Community". Both of these terms are Alzheimer's Society programmes designed to assist those living with dementia and those who try to assist them. Having just written our annual assessment of our activities I thought I would share them with you in part to see if you want to assist in any of them.

- We attend a number of local events such as the Gala and Christmas Fair where we provide a number of information publications but also act as a signpost to other sources of guidance

- We run a couple of coffee mornings partly to fund raise for Alzheimers but also again to provide information – at one of them our local Alzheimers Support Worker was able to attend and spoke to several people in more depth

- We have produced a local dementia directory signposting various suitable local activities.

- We publish a dementia based article in Lookaround every month to interest people

- We ensure that there is plenty of information at the library, TIC and in St Andrews Church throughout the whole year.

- We attend Cumbria networking meetings quarterly to pick up ideas for future events and activities



New Years Day at the Dalesman

Traditional locally sourced and locally farmed menus cooked all day.

***Come and join us at a table in front of our log fire
Along with music during the day from
Joseph Kirkbride.***

***Breakfast and brunch 8am to midday
Lunch and evening menus midday to 9pm
015396 21183 and email info@thedalesman.co.uk***

Stobars Hall Residential Home



The aim of Stobars Hall is to offer our guests maximum independence in order that they can leave full and varied lives, cared for by trained staff who provide physical, emotional and social support every hour of the day

STOBARS HALL RESIDENTIAL HOME

If you would like further details, or simply to chat about life at Stobars Hall, please telephone **Helen** or **Mark** on

017683 71291

Stobars Hall, Kirkby Stephen,
Cumbria, CA17 4HD
www.thefranklyngroup.com

- By the time of publication we will have “blitzed” the Main Street retailers with a small mailshot of resources to assist them if they encounter customers with dementia.

- AND we have offered a Dementia Awareness session on December 3rd for all those retailers – if you would like to come along please contact us on mylesripley@btinternet.com The location will be determined by numbers wanting to come along – it may be my kitchen or the Peoples’ Hall!

For the future, we want to offer more Dementia Awareness sessions especially in all the local schools but they are also available to any group

even if it is just a bunch of interested people or an organised society.

We would like more organisations to sign up to becoming Dementia Friendly – do get in touch with us or just pop along and have a word at the Christmas Fair.

Seasonal Dementia Advice

1/ Put Decorations up slowly - Introduce the Christmas environment slowly. Think about putting decorations up gradually over a few days so it doesn’t come as a big change to the person’s usual setting. Nae Sporrán said: This year I put the tree up on the first of December to brighten the place up and it made ‘C’ so happy, she especially likes the old wreath she has had for years even if she doesn’t recognise it.”

DECORATING

Professional interior and
exterior decorating

Stefan Kliszat
07971666785
015396 20524

EXPERIENCED DRESSMAKER

Made to measure
Skirts, Dresses, Suits,
Bridal, Ball Gowns, etc.
Also alterations undertaken
All made to the Highest Quality by
SHEILA SHUTTLEWORTH
Tel: 015242 - 74322

2/ Keep it simple and familiar - Someone with dementia may feel overwhelmed over the Christmas period, so it's best not to overdo it. Keeping the day's activities low key will help your loved one to relax. Sticking to a familiar routine is also a good idea where possible. Having meals at regular times and in familiar surroundings will help to limit any potential confusion.

3/ Get everyone involved - There are many ways to involve people living with dementia at Christmas time – from something as simple as hanging a bauble on the tree to doing a spot of Christmas shopping. The important thing is that they feel included. Soobee said: With Christmas cards, my mum still wanted to send them out, so I got her to write her name on a piece of paper. I then scanned, resized and copied them and printed them out onto computer labels. Mum helped me to stick in a few of the labels so she felt involved, and I wrote the recipients name in at the top and did the envelopes. We did about 25 cards for her that year and she would never have been able to write her name more than once.”

4/ Create a quiet room - A large number of guests can be overwhelming, so ask family and friends to spread out their visits over the festive period. If things do get busy, designate one room in your house a 'quiet room' where your loved one can relax without loud noise.

5/ Bring back old memories - Whether it's an old song they used to enjoy or a classic Christmas film, find something fun you can take part in. Making a family photo album or memory box could be a nice way to spend time together. Agzy said: I have created a memory iPad which has nothing but hundreds of photographs of friends, family and places. Using my computer I have



Domino Drive Friday 17th January 2020

Barbon Village Hall, Barbon
7.30pm
£3 entry

Raffle & Refreshments



Please come along and support our fundraiser!
Clare Thompson 07590115844
Proceeds go to Barbon & District Agricultural Show

ROYAL BRITISH LEGION

If you or yours have ever served in any of our armed forces and you feel that the Royal British Legion can help you in any way, please call 0808 802 8080 (free phone).

Your local Sedbergh Branch meets on the second Thursday of every month in the White Hart Club at 7:15pm and needs new members in order to keep up its good work. You do not need to have served in the Armed Forces to be a member.

Membership costs £17.00 - call 20964
email: dmparratt@gmail.com for a form.

For more information, visit our website:

<http://branches.britishlegion.org.uk/branches/sedbergh>

THE ROYAL BRITISH
LEGION



added names, year dates and place names. It has been a long labour of love but has paid off dividends as I update it regularly with new photos of interest to her."

6/ Be mindful of food - Although many people eat a lot at Christmas, a full plate can be daunting for someone who has difficulties eating. If you're doing the serving, try not to overload your loved one's plate. We've also got lots more general tips to help with eating and drinking on our website.

7/ Be flexible - It's easy to get caught up in Christmas traditions, but your festive season might begin to look different as dementia progresses. It's always worth having a plan B, and be prepared to change your plans if a particular element isn't working. Pinkys said: main advice is to have no expectations. See what happens! The last Christmas my mother in law spent with us, she came down to breakfast on Boxing day all ready packed and dressed in her coat ready to go home! We were surprised....it also took some serious efforts to persuade her to stay at least one more day."

SIGHT ADVICE SOUTH LAKES

Dennis Whicker

The Sedbergh Branch of SASL meets on the third Tuesday of most months at 2pm in the People's Hall where we chat, listen to guests and have a great deal of entertainment. The November meeting was in the Fat Lamb, Ravenstonedale, for the annual Christmas lunch of which there will be a full report in February.

The January meeting will be on Tuesday 21st when we will have the 'Dignity in Dementia' Singing Group attend to explain what Dementia is all about and give a 'Mini Concert'. It should be an exciting time. It should be an exciting time.

All members of the community, who have a sight problem are invited and welcome to attend all meetings. Transport can be arranged for anyone, if required. If anyone feels that they would like to assist for two hours at the meetings, they would be most welcome too.

Please contact Sue Harper on 20613 with any enquires.



SEDBERGH AND DISTRICT HISTORY SOCIETY

Julie Leigh

When there had to be a last minute change of speaker for our 6th November meeting, Ian Tyler stepped into the breach. His presentation on the Royal Air Force was very appropriate since it happened to fall during the annual period of Remembrance. Ian began by debunking the myth that Cumbria, Galloway and North Lancashire had not played a major part in World War 2. In fact, he said, the opposite was the case, since thousands of airmen and technicians (some from abroad) had been trained in the region.

Furthermore, owing to the difficult nature of the terrain many of the

servicemen had died in training accidents. Between 1939 and 1945, 3,243 of their deaths were recorded. The majority of them were of young men ('brave lads'). Ian regretted that there are no memorials to them and only occasional evidence of destroyed aircraft on the ground. Many of the planes came down in mountainous areas, often when a sudden mist had obscured the landscape. This occurrence was a particular problem in the training of bomber pilots whose future sorties could have involved them in having to cope with quick changes in altitude and direction while flying at 100 miles an hour. Other accidents had occurred over the sea and sometimes aircrews were rescued by the RNLI

THE HEAD AT MIDDLETON

LA6 2NF TEL: 015396 20258

www.middleton-head.co.uk

email.enquiries@middleton-head.co.uk

A charming country inn, dating from 1642, situated on the A683 between the market towns of Sedbergh and Kirkby Lonsdale, within the Yorkshire Dales National Park.

En suite accommodation available for up to 14 persons in family or double rooms, perfect for family occasions, walking groups, get-togethers, stop-overs from the South to Scotland (just 7 minutes from Jct37 on the M6), guests with dogs....

Full English or Vegetarian breakfast included in B and B rate and a restaurant service is provided from 5pm until 8.30pm.

Bookings advisable for both rooms and restaurant reservations.

We look forward to welcoming you to The Head at Middleton.

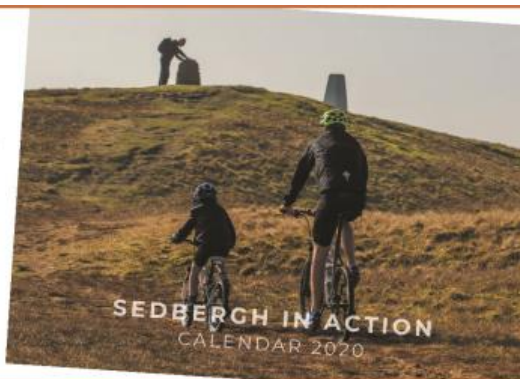
David and Elizabeth Martin, proprietors since 1999.

2020 CALENDAR

'SEDBERGH IN ACTION'

Nearly 20 excellent photos
by some of the town's
best photographers.

Available now from the
Information & Book Centre,
only £4.50.



and Air Sea Rescue Units. However, rescues were often hampered and delayed by the lack of sophisticated communication.

At the outbreak of war there was only one airfield in Cumbria but 30 others were soon constructed. Ian produced maps, diagrams and photographs of them and identified features such as control towers, maintenance centres, hangers, pill boxes and runways. He also listed the range of different planes which had flown from these northern bases. Other activities in the region were also central to the war effort. For example, Sunderland Flying Boats which were used in the defence of the Western Approaches were built on Windermere and ships and submarines were manufactured in Barrow. Ian also spoke about the very generous amounts of money that many communities had donated towards the costs of the war. For example, the population of Settle had contributed £222,000.

Ian, who was the son of an RAF pilot has researched his subject very thoroughly and certainly kept his audience very interested in his wide ranging and fascinating talk.

SEDBERGH COMMUNITY CHARITY SHOP Recycling and Reusing since 2008

Anita Swarbrick

At the Charity Shop we try and recycle or reuse everything that comes in, here are some examples of what goes on behind the scenes:

Great North Air Ambulance -

The GNAA collect our clothing, bags, belts, shoes, teddy's that we cannot sell. The contents of these bags are then recycled as they are, or if they are past their best, made into rags. They will also take old DVDs and CDs.

Mobile phones -

We collect mobile phones and the Great North Air Ambulance collect these from us too

Woollens -

Our woollens that are not in a condition to sell as items of clothing are saved for the crafters. They are used for rugging etc.

Old sheets, blankets and towels -

Any old sheets that are not good enough for their original use are put in the craft stall and can be used as fabric for artists canvases. The blankets can be used for rag rugging,

cushion covers, bags etc. The towels that we deem too worn to be used in the home, we put on the pet stall for towelling dogs down after a walk. These go very quickly.

Crafts -

At the Charity shop we have a small craft stall that is filled with everything you can imagine. Thread, zips, craft magazines, wool, material, beads, buttons....you name it and I'm sure we sell it!

Bric a Brac -

The bric a brac, kitchen equipment, jewellery, pictures, toys etc that don't sell and is in good condition we save for collection for another charity. A local person collects the bags from us and takes them to a distribution area. These items are then sent on to

Wolfwood Animal Charity in Lancaster and various other animal charities.

World of Books -

WofB collect all the books that we can't or won't sell. The books are collected in large boxes which are then weighed. We are then paid for the weight in books and the money we receive goes straight back into the community fund.

Bras for a Cause -

The charity shop collects unwanted bras, and one of our volunteers takes them to our local hospital's oncology department. For every tonne of unwanted bras they collect, £1000 will be donated to Breast Cancer Research. The donated bras will then

a helping hand



To help older people in the community retain their independence in later life by offering a friendly and reliable service.

a helping hand now has a small team of people working in Sedbergh and surrounding areas.

Do you need help with?

Weekly shopping trips ~ Help with paperwork, Basic IT

Transport for hospital/ doctors appointments

Transport/companionship for your interests and hobbies

Home help

Companionship

If so, call Linda Greensmith on 07919152526
or email lindagreensmith1@aol.com and I will be happy to help

All members of the team are DBS checked, have public carers liability insurance and have completed numerous courses in connection with older adults such as first aid and dementia awareness.

be sent to developing countries in Africa.

Spectacles -

We also collect old spectacles. These are then refurbished and given to the poor and needy in the UK and other countries.

Toiletries -

The toiletries that we cannot use because they have been opened or are out of date by a little way, we collect these and a volunteer takes them to a charity for homeless people. Here they can get advice, take a shower, wash and dry their clothes and get a hot meal. It's at Manna House, Ann Street, Kendal.

Compost -

Any teabags, small bits of paper, fruit cores and skins get taken home by the shop manager to go into her various compost bins.

Plastic -

We recycle our plastic if it can't be used for something else. We strip boxes and containers of their plastic and paper etc and recycle the relevant items.

Bags -

Plastic bags are recycled for use in the shop, we do not charge people for these. Any bags that have holes in are reused as handbag and rucksack stuffing. If we have too many bags, we take some to Ryecrofts, where they can use them for their customers.

Electrics -

We will take electrics that have a CE mark on them and only if they are in a good working condition. We have these PAT tested before they go into the shop for sale.

Duvet and Pillows -

These normally go into landfill, so we have devised a way of recycling them into animal beds. By cutting the duvet into different sized pieces and covering them in fabric we have been donated, we can sell them as beds. Please note though, we have very limited space at the charity shop and would prefer it if you asked when wanting to donate a duvet. This way we won't be stuffed to the ceiling with fluffy bedding and our volunteer sewing group have time to process the animal beds.

Christmas Wrapping Fabric -

We will be selling the normal wrapping paper that we have been donated, but having read that this cannot be recycled, we tried to think of a solution. We are going to make recycled fabric sheets to wrap present with, that can either be reused or donated back to us. We have lots of ribbons and lace etc to tie the parcels up too. Everything to make your Christmas as festive as it can be!

The Charity Shop thanks everyone for their kind donations. With just a little thought we can reuse, recycle most things. RETHINK!

The Charity tries to recycle most things, either to sell, use, or pass on to other charities. We have dramatically reduced the amount of rubbish that goes into our bin and try to think of different ways of using things rather than them going into landfill sites.

In the last three years the Charity has reduced their waste by two thirds.....and we are still trying

SEDBERGH ENVIRONMENTAL NETWORK

Michelle Hartley

On 12th October the Sedbergh Environmental Network had our very first Eco Market and it was a great success! It was wonderful to see so many people concerned about the environment and wanting to do something to help.

Despite a few last minute cancellations for stalls, the Church was packed with great stall holders selling eco products, promoting the preservation of the environment.

We had representatives from the RSPB and Cumbria Wildlife Trust, who both do fabulous work conserving nature reserves near and far. There was also the Lune Rivers Trust who worked with the students of Sedbergh Primary School last year to nurse and release 50 baby eels (elvers) into the Rawthey River.

Cumbria Master Composters, a new organisation (2017), came to explain and promote home composting with a display of worms and composting bins. Cumbria Action for Sustainability came to promote their newest project 'Cold to Cosy

Stephenson & Wilson

15 Fell Close, Sedbergh LA10 5AP

General Builders

Plastering ~ Roofing ~ Extensions
Fire Places Fitted

Paul Stephenson
015396 21557
07810 595543



Tom Wilson
015396 20954
07790 946578

Garsdale Design

We provide architecture, planning,
urban design, 3D geodesign and
heritage services for the
Dales and Lakes

Our skills and experience are unrivalled
whatever the size of the project

Our service is personal and tailored
to individual needs

We are an RIBA Chartered Practice



Contact details:

phone: 015396 20875 (office hours)

email: info@garsdaledesign.co.uk

web: www.garsdaledesign.co.uk

Homes' aimed at addressing issues of winter warmth and reducing carbon footprints.

We also had our local Charity Shop selling various pre-loved goods (with much more in the shop itself). The volunteers explained the various ways the shop recycles, including collecting used eye glasses; selling excess items to World of Books which has a massive selection of second hand books online; and collects bras for 'Bra Recycling' which uses them to support small businesses in Africa and raise funds for breast cancer research.

The eco product sellers included Victoria March Skincare, beautifully

scented soap and solid shampoo & conditioner bars (also ones for dogs!), all either palm oil free or from sustainably sourced oil. There were also eco soap accessories and all was in plastic free packaging. Thornby Moor Dairy came with delicious cow and goat cheeses made from milk from local farms, keeping food miles low. The farms utilise a low-input/low-output style of farming and the goats are fed on hay from local SSSI's, while the cows are fed grass grown on the farms.

Jitterbugs was there with amazing insect decorations crafted from salvaged, re-purposed and recycled parts. Nothing goes to waste with these creative critters, they are the very definition of up cycling! Ivy

Cottage Baker's delicious breads and biscuits are made using local, organic and natural ingredients. Not only is the company a member of the 'Real Bread Campaign' and 'Sustain', they do demonstrations on how to use old loaves to reduce waste.

With the market being such a great success we are already looking at organising another! If you were unable to come to this market keep an eye out for future events. Or if you would like to get involved in the next market or the Sedbergh Environmental Network contact us at sedberghecomarket@greencobweb.co.uk or visit our Facebook page. Thank you to everyone who helped with the market and to everyone who do what they can for the environment.

euronics
Let's Make Life Easy

Tooby's, Kew House
Ingleton, LA6 3NU
Tel 015242 41224

Add the finishing touches this Christmas at Euronics

For all your electrical needs look no further than your local independent retailer with decades of experience

With hundreds of products on display from all the leading brands we will help you find the right products for your needs

If you are having problems with an Appliance or TV reception, then we can help with that too!

Seasons Greetings to all our customers and Thank you for your continued support

www.toobys.com

Tooby's
ELECTRICAL STORE

ZERO WASTE SEDBERGH

Suzie Pye

Allow me to stray slightly off topic this month, although still in the spirit of Zero Waste.

The Reverse Advent Calendar

Everyone loves advent calendars!

But if you want to try something a little different this year, you can create an advent calendar that you and your children put something into every day instead of taking something out.

And it couldn't be easier: Simply set up a large box, basket, or crate in a corner of your living room or kitchen, and choose an item to add to it each day from December 1st until Christmas Eve. The full box can then be donated to a local Food Bank where the items will be distributed to



local families who need a helping hand this Christmas time.

Choose food items that are non-perishable or that have long dates and do not need refrigerating: tinned food, biscuits, selection boxes, mince pies, Christmas puddings, jars of preserve, toiletries...

The latest set of figures from Kings Food Bank in Kendal shows they are receiving over 100 new referrals every month, and are experiencing an 18% increase in usage year on year. Christmas puts even greater pressure on already struggling families, with many forced to choose between heating their homes and eating.

So please consider taking part in this very easy pre-Christmas activity, and help support this vital local service.

If you need your completed reverse advent calendar delivering to a local Food Bank, let me know and I will be happy to organise collection and delivery on your behalf 0783 3534 710

Merry Christmas!



H & M
CRAFTSMEN
KITCHENS | BEDROOMS | COOKSHOP

Pots | Pans | Cookware | Bakeware
Inspiration | Recipes | Gift ideas
Why not call in ?

Ingleton | North Yorks | LA6 3NU
015242 41535
kitchensandbedrooms.co.uk

FUNDRAISING FOR OVARIAN CANCER

Sarah E Woof

I am looking to have some event or other to support research into Ovarian Cancer and wonder if there are others who would like to help. Perhaps, like us, you are watching a loved friend or relations go through treatment for this, or have in the past or it is more personal.

What would you support or what wouldn't you support? Hubby and I thought of shaving our heads to raise money but, for various reasons, changed our minds. Bungee jumping or sky diving are beyond us, so what do we do?

Last year I put on a 'Fed up Tea' to raise funds for a local organization and a national charity. While it did raise money it wasn't all that well supported, but many thanks to those who did come. So, would an Afternoon Tea for this worthy cause produce better support, or a pub quiz with buffet or an event with bouncy castle and stalls? Please do get in touch with me if you feel a stirring deep inside to get involved or if only with an idea. Thank you.

Sarah - 015396 25212.

Fritz Hrynyk

LIGHT TOUCH THERAPIST

~~~~~

Combines  
CranioSacral techniques with Reiki  
to help release tension &  
restore body-mind balance

~~~~~

Treatments in Millthrop, Sedbergh
& Barbon Village Hall by appointment
07817 665662 / 015396 21303

~~~~~

## ST ANDREWS COFFEE MORNINGS

*Anne Reed Screen*

The last coffee morning of 2019 will be Wednesday 18th December 2019. We will restart on Wednesday January 8th 2020.

We wish you all a Happy Christmas and hope to see you all in the New Year.



# IAN HIGGINBOTHAM & PAINTING & DECORATING

— professional personal service —

please call to talk over your requirements with no obligation

— [www.painterian.co.uk](http://www.painterian.co.uk) —

07813 818958

[info@painterian.co.uk](mailto:info@painterian.co.uk)

## SEDBERGH APPLE DAY

*Ann Parratt*

Sedbergh Apple Day took place on 26th October and was organised by COGS (Community Orchard Group Sedbergh).

Apple pressing, using the Spiedel Mill and Hydropress took place from 9.30 in the morning outside The People's Hall, and although it was a cold, wet day, and the rugby was on, there was a good turnout.

There were about 140 kg of donated apples, which gave 70 litres of juice for the community. The press takes 40 kg of apples and gives 25 litres of juice every 20 minutes. We pressed for four and a half hours so there was at least 500 kg of apples and we made about 300 litres of juice.

The experts identified some apples as Isaac Newton or Nancy Crow and Bess Pool and we hope to graft from



the owner's trees as these are a rare find. The South Lakeland Orchard Group (SLOG) apple experts were busy all the time, giving advice and identifying apples.

Also in the Hall, English folk music was played throughout the event by Common Ground, adding a lovely atmosphere to all the other activities. Delicious homemade lunches were served, including homemade soup. Cakes, homemade preserves and chutneys were on sale.

With all this going on, there were also children's activities, plants for sale and various organisations giving advice about composting, beekeeping, wildlife and red squirrels.

Next year this family friendly event takes place on 24th October and everyone is welcome, whether they bring apples or not. There will be loads to see and do!

## SEDBERGH SPRING SHOW - SATURDAY 25TH APRIL 2020

*Marion Wood*

Christmas is coming and before you catch your breath it will be the Sedbergh Spring Show on 25th April 2020. Time to use the winter evenings to plan your entries! We have added in some new classes and removed a few of the less popular ones.

The official entry forms will appear in the shops by the beginning of March, but here is a list of classes to get you thinking. The school and preschool classes will be agreed once again separately. We look forward to lots of entries providing a wonderful display of the talent in Sedbergh.

Any queries please ring Margaret Milburn (20610) or Marion Wood (21385)

| Class Name                                      | Section Name |
|-------------------------------------------------|--------------|
| A patchwork or quilted item                     | Handicrafts  |
| A new item from something old (any material)    | Handicrafts  |
| A wooden item                                   | Handicrafts  |
| A bag of any medium (not from a kit)            | Handicrafts  |
| A cross stitch article (indicate if own design) | Handicrafts  |
| A tapestry (indicate if own design)             | Handicrafts  |
| A handmade cushion (max size 40cm)              | Handicrafts  |
| An item made from pompoms                       | Handicrafts  |
| A piece of fused glass                          | Handicrafts  |
| A handwoven scarf                               | Handicrafts  |
| A homemade bracelet                             | Handicrafts  |
| A card made from recycled material              | Handicrafts  |
| A Spring Bonnet                                 | Handicrafts  |

| Class Name                                                                    | Section Name       |
|-------------------------------------------------------------------------------|--------------------|
| A soft toy knitted, sewn or crocheted                                         | Handicrafts        |
| A toy made from scrap material                                                | Handicrafts        |
| A dressed doll (the doll may be bought)                                       | Handicrafts        |
| Any craft item not included above                                             | Handicrafts        |
| A hand knitted garment in thicker yarn (double knitting or thicker)           | Garments           |
| A hand knitted garment in finer yarn (4 ply or finer)                         | Garments           |
| A hand knitted scarf, snood or shawl                                          | Garments           |
| A crocheted article or garment                                                | Garments           |
| An apron sewn from material                                                   | Garments           |
| A houseplant (not to have been exhibited before and owned for over 12 months) | Flowers and Plants |
| "Birth of a baby" a dinner table arrangement (W/D 45cm)                       | Flowers and Plants |
| "Walk in the Woods" an arrangement in a box (W/D 45cm)                        | Flowers and Plants |
| An arrangement in a basket (W/D 45cm)                                         | Flowers and Plants |
| "Under the Sea" a petite arrangement (W/D/H 25cm)                             | Flowers and Plants |
| "A Desert Island" (W/D 60cm)                                                  | Flowers and Plants |
| Four sausage rolls                                                            | Home Produce       |
| Fruit pie                                                                     | Home Produce       |
| Fruit cake                                                                    | Home Produce       |
| Four fruit scones                                                             | Home Produce       |
| Six biscuits of any variety                                                   | Home Produce       |
| Four cup cakes                                                                | Home Produce       |
| Gingerbread                                                                   | Home Produce       |
| Lemon drizzle cake                                                            | Home Produce       |
| Teabread                                                                      | Home Produce       |

| Class Name                                                          | Section Name |
|---------------------------------------------------------------------|--------------|
| Round shortbread (minimum size 15cm)                                | Home Produce |
| Six flapjack pieces                                                 | Home Produce |
| Victoria sandwich (filled with raspberry jam)                       | Home Produce |
| Roulade                                                             | Home Produce |
| Pot of raspberry jam                                                | Home Produce |
| Pot of blackcurrant jam                                             | Home Produce |
| Pot of Seville orange marmalade                                     | Home Produce |
| Pot of any other fruit marmalade                                    | Home Produce |
| Pot of any other jam                                                | Home Produce |
| Pot of jelly                                                        | Home Produce |
| Pot of lemon curd                                                   | Home Produce |
| Pot of chutney                                                      | Home Produce |
| Bottle of homemade wine                                             | Home Produce |
| Bottle of flavoured spirit                                          | Home Produce |
| A white loaf (handmade)                                             | Home Produce |
| A brown or wholemeal loaf                                           | Home Produce |
| Painting: Still life                                                | Art          |
| Painting: Portrait                                                  | Art          |
| Painting: Landscape                                                 | Art          |
| Painting: Mixed Media                                               | Art          |
| A page from your sketch book                                        | Art          |
| Wildlife (size minimum 8x6, maximum 12x10)                          | Photography  |
| Local View (Cumbria or Yorkshire) (size minimum 8x6, maximum 12x10) | Photography  |
| Spring (size minimum 8x6, maximum 12x10)                            | Photography  |
| "A Misty Day" (size minimum 8x6, maximum 12x10)                     | Photography  |
| People and Portraiture (size minimum 8x6, maximum 12x10)            | Photography  |

| Class Name                                                       | Section Name     |
|------------------------------------------------------------------|------------------|
| People and Portraiture (size minimum 8x6, maximum 12x10)         | Photography      |
| Local Event (size minimum 8x6, maximum 12x10)                    | Photography      |
| Shadows (size minimum 8x6, maximum 12x10)                        | Photography      |
| A footprint (age 6 and under)                                    | Age 6 and under  |
| Make a headband (age 7-11)                                       | Age 7-11         |
| Rainbow jelly in a glass (age 11 and under)                      | Age 11 and under |
| A mug of flowers (age 16 and under)                              | Age 16 and under |
| Photograph of a garden bug (maximum 5x7) (age 11 and under)      | Age 11 and under |
| Photograph of hands with a view (maximum 5x7) (age 16 and under) | Age 16 and under |

## YOGA BRUNCH AT THE MALABAR

A beautiful morning flow and restorative practice, with a delicious brunch at the luxurious Malabar



WEDNESDAY 29 JANUARY

FROM 9.30 UNTIL 12 NOON - FOR £33

JOIN YOGA TEACHERS CAROL DOWNING AND KAREN NEWIS AT THE MALABAR, (LOCATED JUST TWO MILES OUTSIDE SEDBERGH ON THE A684)

Email [info@themalabar.co.uk](mailto:info@themalabar.co.uk) to book your place

**LAKES**

**Hire, Sales  
& Erection**

Commercial  
& Domestic

# Scaffolding

No Job Too Big  
No Job Too Small

Free Estimates with  
No Obligations

**SIMON SHAW**

*Based in Kendal - covering Cumbria*

Tel: 01539 734745

Mob: 07917 064767

info@lakes-scaffolding.co.uk

www.lakes-scaffolding.co.uk



## **SAFE FANCY DRESS COSTUMES**

*South Lakes Citizens Advice*

'I'm looking online for fancy dress costumes for my kids. But I'm worried as I've read stories about some costumes not being fire-safe and some children being hurt. What should I look for to keep them safe?'

Unfortunately, you're right. There have been a number of incidents where children's costumes were set alight by accident. Check the costume comes with safety instructions, a CE marking and the manufacturer's name. A CE marking means the product complies with health and safety requirements, and the product has been tested for

flammability. Sometimes a fake CE mark is used. A giveaway is the middle line of 'E', which should be shorter than the other parts.

Make sure you're buying from a reputable online retailer. Find out as much about them as you can, like customer reviews, or ask them directly for safety information. Also check whether the product has ever been recalled before, on the website [productrecall.campaign.gov.uk](http://productrecall.campaign.gov.uk)

Talk to your children about how best to stay safe while having fun in fancy dress, like keeping away from candles and open flames. And, if you're in doubt, don't buy the product. You can always contact Citizens Advice consumer helpline on 03454

04 05 06 for further help or to report an issue.

Free, confidential advice and help is available from South Lakes Citizens Advice on any aspect of debt, consumer problems, benefits, housing, employment or any other problems. We can give detailed advice over the phone – telephone 03444 111 444. For email see our website: [www.southlakescab.org.uk](http://www.southlakescab.org.uk). We have various outlets across South Lakeland if an appointment is required. For Money Advice and for on-going enquiries please call 015394 46464.

### CHARITY GIRLS JUMBLE SALE FOR MS

*Sandra Longlands*

On Saturday 12TH October "The Charity Girls" did a Jumble sale for MS Research in the Peoples' Hall with the kind help of others. It went really well and I was able to send a £300 cheque for MS Research. But included in that money was £15 from a Quiz sheet I did – "Over and Out" with lots of help so many thanks.

Many Many thanks for your donations and this comes from MS Research as well.

**Steve Hopps**



Property Maintenance  
Painting and Decorating  
Gardens tidied & maintained  
All types of work considered  
Tel: 015396 23388  
Mob: 07870 785322  
[steve.hopps2@gmail.com](mailto:steve.hopps2@gmail.com)

### A TRIBUTE TO THE LATE JEAN DIXON

*Joan Collins*

Jean was my friend. Jean was Beamsmoor. In fact, Jean and Beamsmoor was the reason I came to live in Sedbergh some 30 odd years ago.

We first met when we started our nursing career at the old Westmorland County Hospital in the fifties. We never worked together but somehow became friends and shared a flat in one of the big houses at the top of Beast Banks. Later we went our separate ways and when we married – Jean to live in Sedbergh and me in Kendal – but visited each other regularly. We kept in touch when I moved to live in Maidenhead but when visiting my sister in Keswick always managed to see Jean.

That's when I learned of the project to turn Beamsmoor into a residential home. When my husband died, I had to decide what to do etc. That's when I had a phone call from Jean. Beamsmoor was "up and running" and would I like to come and work with her and I certainly didn't say No.

What a great time we had, great staff and residents alike – especially the Christmas Pantomimes! Then the Holidays – to Canada and USA and many here in the UK. We really enjoyed ourselves.

After Beamsmoor we continued to shop and lunch and visit but always managed to talk about Beamsmoor.

And so, my friend it's a last goodbye – you did me a great favour in coming to live in Sedbergh. But you did warn me that it rains quite often but, Jean, doesn't it rain everywhere?

## SEDBERGH INFORMATION AND BOOK CENTRE

*Andi Chapple*

Okay, so that was 2019. Not one of your normal years ... Thanks are still due to our customers, people who've come in from nearby, or across the ocean to find something out about Sedbergh and the surrounding area, local businesses and organisations, including, of course, the editorial group of Lookaround, who have worked with us in one way or another this year.

I want to say thanks to all the volunteers, without whom the information centre wouldn't be open. Everyone at the centre, except me, is a volunteer, including the board of directors who do a complicated job with great good will, those who staff

the front desk and share their great knowledge and those who do one of the administrative tasks that keep the wheels turning.

If you pop in to see us this month we can offer the 2020 Information Centre calendar with stunning images from a number of Sedbergh's best photographers who have donated their work. A4, landscape format, one page per month and available, with a card mailing envelope, if required, at £4.50 a time. We can also offer Christmas cards in modern and traditional designs which are sold to benefit a wide range of UK charities. We have Sedbergh-themed gifts and a lot of second-hand books.

All the best for Christmas and the New Year to all of you from all of us.



  
*Marquees & Teepees*  
KILLINGTON

FRAME MARQUEES & TEEPEES  
VENUE COVER FOR ALL OCCASIONS

FURNITURE HIRE & TABLE LINEN

T: 015396 20602  
W: WWW.MARQUEETEEPEE.CO.UK  
E: OFFICE@MARQUEETEEPEE.CO.UK



## **A YEAR AT THE PEOPLES' HALL**

*Sandra Gold-Wood. Vice Chair.*

Gosh it is a busy place. There have been five fell races and at least three cycling events along with three lovely weddings and several birthday bashes for both young and not so young all of which have used all the facilities the PH has to offer.

There have been two elections and of course there is one more on the Thursday December 12! There was the annual Holiday Club in July a Book Fair in September and a marvellously busy Apple day in October. That is without all the regular activities like PH Worship and the NHS Training days.

All the happy dogs in Cecily Thursday evening training class.

Then there is the Art Society, WI's, NFU, the Parish Council meetings along with incidental meetings of other groups. Then there are the many assorted exercise classes and sadly at least 2 funeral teas. Goodness knows how our army of hygiene technicians keep up with it all.

Looking forward into the New Year; The People's Hall invites you to come and enjoy celebrating 'Burns Night'. There will be a Haggis Supper, a Piper, a grand raffle, a quiz and lots of swinging kilts; that of course is optional. Tickets go on sale at the end of Dec and will be available from the Information Centre at £15 per person to included supper.

---

## **PEOPLE'S HALL NEWS**

*Dr Gina Barney, Hon Secretary/  
Treasurer, 20790*

Some, if not all, of the readers of this article may be visiting the Hall on 12 December 2019 to exercise their democratic duty. Whilst you are there have a look round at what has happened to the Hall over the last five or so years. It has been transformed from a wooden hut to a substantial building with new toilets, new changing rooms, committee room, stage and hall curtains, side and main entrances and the addition of the People's Gym and Fitness Centre. We have raised and spent nearly £500.000 doing this. Hopefully you will use our facilities in 2020 for your event.

We are not stopping there. We need a better heating system and better main hall lighting. And it could do with a bit of redecoration. But the



### **THE PEOPLE'S HALL BURNS NIGHT SAT JAN 25**

**Piping in a Grand Haggis supper.**

**Drumming in a few Wee Drams**

**Dancing Reels & Jigs**

**With a bit of Ceilidh too**

**Tickets at £15 per person**

**Black tie and posh frocks please**

**Bar, Raffle and even a Quiz**

**Doors open at 7pm.**

# CUMBRIA WOOLSHED

## CUMBRIAN WOOL FURNISHINGS COLLECTIVE

An exciting new collaboration showcasing the products of well established local businesses

- \* Laura's Loom
- \* Cable & Blane
- \* Woolly Rug Co.

HOME OF  
  
WOOLS  
OF CUMBRIA  
CARPETS

HOME OF

  
BANKFIELD  
MILL  
CARPETS & RUGS

- \* Herdwick Limited
- \* Amy Bateman Photography

The Gateway Unit, Dockray Hall Industrial Estate, Kendal, LA9 4QY  
01539 721252

Open Mon-Fri 9.30~5 & Sat 10~4

roof of 1982 leaks. Not a lot but enough to spoil what we might do. We have to replace the roof at a cost of £45,000. We have about £25,000 and need to raise the rest. Perhaps you could help? When the roof is done we can do all the other things. The Hall is 65 in 2021, it would be nice to do all this by then!

### COMMUNITY VOLUNTEERS SOUGHT FOR SCRUTINY PANEL

*Andy Baines (Neighbourhood Watch)*

Cumbria Police are looking to recruit volunteers to be part of an external scrutiny panel which will look the at the Constabulary's use of

police powers, in particular stop and search and the use of force.

The panel would meet three times a year and would hold the Constabulary to account for any issues identified, helping us improve our use of this important policing approach.

Meeting locations are flexible, according to accessibility and availability of volunteers, but will generally be held early evening.

If you would like to be part of the scrutiny panel please could you forward your details to Inspector Gemma Hannah (gemma.hannah@cumbria.police.uk), including in the response your name, address, age, and contact telephone number

## FLICKS IN THE FELLS

*Stuart Gray*

Just a few quick lines to make everyone aware that Flicks in the Fells continues to march on into the new year with a new programme of films for all you Sedbergh movie lovers. We are now happily settled at St Andrews as our new venue and have shown three films there already, the last being the tension filled wartime drama *Das Boot*. The church is very atmospheric and unique in its part time role as a cinema and unlike any other cinema you are provided with a cushion as you come in! We also do tea, coffee and biccies, as refreshments, popcorn, sweets and hot water bottles have yet to be sorted! So keep an eye open for our



posters and advertisements for the next film, which will hopefully be on the first Saturday of each month. Come along, meet friends and enjoy a night at the 'flics'

If anyone out there wishes to volunteer to help with Flicks in the Fells we can always use your talents with setting up, running the performance and clearing up afterwards. It's not hard work and any help is always appreciated. See you at the next Flicks in the Fells.

---

## THANKS

*Elspeth Griffiths*

Sedbergh has enjoyed many events and performances this week so I should like thank the Town Band for the Remembrance Concert in St Andrew's Church on Sunday 10th November. They played so well and Stuart Manger introduced the items.

Next thanks to Settlebeck School for their entertainment, Showcase, on Tuesday 12th. The play and the music, also, the work the students and staff had done on the wars were impressive. The cakes made by the students were delicious and their welcome and help from all were much appreciated.

Finally, on Thursday 14th, there was a fine concert the Sedbergh Orchestra in St Andrew's Church.

So much effort goes into all these events by so many people and we appreciate so much.

**S.Ostle Services**  
Plumbing, Heating and Joinery

Installation, Service & Repair of:

- Domestic Oil, Natural Gas & LPG (Boilers, Fires & Cookers)
- Solar Thermal Technology
- Underfloor Heating

Plus All Your  
Plumbing & Central Heating  
Requirements.

Tel: 01768 371556  
Email: [ostle2011@hotmail.co.uk](mailto:ostle2011@hotmail.co.uk)



Registered  
Business

## SANDRA W LONGLANDS 60TH BIRTHDAY

*Sandra Longlands*

On Saturday 26th October I was given a Surprise Party for my 60th at the Peoples' Hall and it was a BIG Surprise and I would like to thank everyone for coming and hope you had a good night. I would also like to say a big thank you for the Donations you kindly gave for the Peoples' Hall and we will be able to get Gift Aid with that so a Big Thanks.

I would like to say a Very Big Thanks to our Rose and Steve for managing to do a big party with all that hard work and keep it a surprise, also a Big Thanks to Michael and Sara for the lovely food and for Martha cooking it. I know some of my friends said they found it difficult to be with me and not say anything and at times had to walk away before it slipped out, so well done.

So with a Huge Thank You to all of you who made my 60th Birthday Surprise a truly brilliant night with lovely people and hope you also had a lovely night eating, dancing to lots of 70s songs – thanks Danny and also Chit Chatting.

Lots of love and best wishes,  
Sandra WL XXXX



## CRIME UPDATE FOR NOVEMBER 2019

*PCSO Kathryn Taylor*

As many of you are already aware, there has been an increase in thefts of quad bikes and trial bikes in the local area. With several of these thefts, the thieves have also stolen other items such as tools and fuel. We recommend that any crime prevention methods you can implement to secure your property, the better. This can include things like DNA property marking/marketing schemes, using BSI quality locks and chains, not leaving tools available such as bolt cutters, fitting wheel clamps or alarms and securing all access points. Try to make any property as identifiable and unique as possible. This makes it less appealing to steal and easier to identify. It is also recommended that you take photos and record serial numbers of your property.

Crime prevention methods like the ones mentioned above do not prevent every theft, however the objective is to make it as difficult and time consuming as possible for a thief to access your property. It is also key to report any suspicious activity or vehicles to the Police that you may think are linked to these thefts. You can do this via 101 or there is an online reporting form on [www.cumbria.police.uk](http://www.cumbria.police.uk)

### Joss Lane & Loftus Hill Car Parking Charges

1 hour = £1.00

4 hours = £4.00

2 hours = £2.00

5 hours = £5.00

3 hours = £3.00

One week = £10.00

Annual Resident Permit, Day = £40

Annual Resident Permit, 24h = £60

Both available from the Information Centre only,  
renewable annually on 1<sup>st</sup> September.

## PUBLIC TRANSPORT IN RURAL AREAS

*Georgina Devine*

Are you interested in being part of a steering group for public transport in Rural Areas? We plan to meet once a month in the Sedbergh area. Contact Georgina Devine on 077898 56371 or 015396 21467 for further details.

While Georgina is based in Sedbergh, she travels through to Hawes and Leyburn on the buses available. She is keen to support good transport links between North Yorkshire and Cumbria.



## LAURA'S LOOM

British Wool·British Made

Visit Laura's Loom for beautiful woollen blankets, handwoven scarves, walking socks and more, all made from Yorkshire Dales and Cumbrian wool.



Studio 2A, Farfield Mill, Garsdale Rd,  
Sedbergh, LA10 5LW  
Open every day 10:30-4:30

[www.laurasloom.co.uk](http://www.laurasloom.co.uk)

### Royal Mail International Posting Dates for Christmas

| Country         | LRPD   | Country                                   | LRPD   |
|-----------------|--------|-------------------------------------------|--------|
| Africa          | 09-Dec | Ireland                                   | 18-Dec |
| Asia            | 09-Dec | Italy                                     | 14-Dec |
| Australia       | 12-Dec | Luxembourg                                | 18-Dec |
| Austria         | 16-Dec | Malta                                     | 10-Dec |
| Belgium         | 18-Dec | Middle East                               | 09-Dec |
| Canada          | 14-Dec | Netherlands                               | 16-Dec |
| Caribbean       | 09-Dec | New Zealand                               | 12-Dec |
| Central America | 09-Dec | Norway                                    | 16-Dec |
| Cyprus          | 10-Dec | Poland                                    | 14-Dec |
| Czech Rep       | 14-Dec | Portugal                                  | 16-Dec |
| Denmark         | 16-Dec | Slovakia                                  | 16-Dec |
| Eastern Europe* | 11-Dec | South America                             | 09-Dec |
| Far East        | 09-Dec | Spain                                     | 16-Dec |
| Finland         | 14-Dec | Sweden                                    | 14-Dec |
| France          | 18-Dec | Switzerland                               | 16-Dec |
| Germany         | 16-Dec | Turkey                                    | 12-Dec |
| Greece          | 12-Dec | USA                                       | 14-Dec |
| Iceland         | 16-Dec | <b>*Except Poland, Czech and Slovakia</b> |        |

### United Kingdom

|           |        |            |        |
|-----------|--------|------------|--------|
| 2nd Class | 18-Dec | PF 48      | 20-Dec |
| 1st Class | 23-Dec | PF 24 & AM | 23-Dec |
| Sp Del    | 23-Dec |            |        |

### International Economy

|                                                                 |        |
|-----------------------------------------------------------------|--------|
| All Non European Destinations**                                 | 05-Oct |
| Middle East Far East***                                         | 05-Oct |
| Sth Africa, Hong Kong, Singapore, USA Canada                    | 12-Oct |
| Eastern Europe, Greece, Cyprus, Turkey, Malta, Iceland          | 02-Nov |
| Western Europe                                                  | 16-Nov |
| <b>** Except Middle East, Sth Africa, Far East, USA, Canada</b> |        |
| <b>*** Except Hong Kong and Singapore</b>                       |        |

### HM Forces (BFPO)

|                  |        |
|------------------|--------|
| Operational BFPO | 25-Nov |
| Static BFPO      | 13-Dec |

### Writing to Santa?

Send your letter to the address below and include your name and address so Santa knows where to send his reply. Please post by 7th December so Santa has time to reply.

Santa  
Santa's Grotto  
Reindeerland  
XM4 5HQ

## PERSONAL MESSAGES

### **BROWN**

Thank you very much to everyone who has helped in any way following the early and sudden arrival of the twins. Thanks also for the cards and gifts. We have been overwhelmed by the kindness and support we have received from friends and family.

Matthew, Emma, Jackson, Joshua, Hannah and Harrison

=====

### **HALL - 29th December**

Happy 21st Birthday to my beautiful Goddaughter Ashleigh Hall. I'm so very proud of you. Have a wonderful day. Lots of Love, Aunty Sarah

=====

### **DENNIS WHICKER**

Dennis would like to thank most sincerely all family & friends for the fantastic support over the last 14

months with his fight of Cancer which has been 100% successful. The recovery has been slow but every day is a new day. Dennis would also like to thank members of the community that contributed to the collections and gifts that were presented to him on his 'Retirement' from being Editor of Lookaround for over 30 years, especially the box of Wine and gifts from the Audio & Large Print Lookaround Team and the gifts & cheque received at the Spring Show presented by Tony Reed-Screen & Dr Gina Barney on behalf of the community. We had two lovely weeks in Gloucester & Shrewsbury. Thank you also to the new Lookaround Team for taking on and continuing with 'my baby' which was not an easy task to undertake.

## A VIEW FROM THE FELLS



THAT'LL TEACH THE LITTLE SO-AND-SO !

# Christmas Messages

## THE ALLAN FAMILY

Season's Greeting's. Health and Happiness to All. May 2020 be a Good Year.

From The Allan Family

=====

## DIANE COWIN

Diane Cowin would like to wish all her Friends and Neighbours a very Merry Christmas and a Happy New Year.

=====

## DAWSON

To all my family and friends I send greetings. May the New Year bring you Love, Joy and Peace. God bless you all.

=====

## DEVINE

Georgina wishes everybody a Merry Christmas and a Happy New Year for 2020.

=====

## GIBSON

Doreen would like to wish all family and friends a Merry Christmas and Happy New Year.

=====

## MARY GLADSTONE

Christmas Greetings to everybody and many thanks to all of you who are helping me in my blindness. Your generous support is much appreciated.

## HAYGARTH

Brian and Betty wish all family and friends a Merry Christmas and a Happy New Year

=====

## JED'S GARDENING SERVICE

would like to thank all his customers.

=====

## METCALFE

Rex would like to wish all family and friends Merry Christmas and a Happy New Year.

=====

## MITCHELL

Ann would like to wish everyone Merry Christmas and a Happy New Year

=====

## POSTLETHWAITE

Peggy would like to wish all my family and friends a Merry Christmas and a Happy New Year.

=====

## RAW

Edna would like to wish all friends & neighbours a Happy Christmas & best wishes for the New Year

=====

## SKILL

Zander and Elizabeth send everyone a Happy Christmas and best wishes and good health for 2020.

**More Messages on next page**



## Christmas Messages

### STEADMAN

Garth wishes his friends and past customers a Very Merry Christmas and a Happy, Healthy and Successful New Year.

=====

### TAT

Patricia Tat of Walwyn, Station Rd, Sedbergh wishes all her friends and neighbours in Sedbergh, Garsdale and Dent a very happy and peaceful Christmas with all good wishes for 2020

=====

### DENNIS & JACKY WHICKER

Jacky & Dennis Whicker would like to wish all family & friends a Very Merry Christmas & a Peaceful, Healthy & Prosperous New Year.

## EDITORIAL

One of my criteria for success for the 'new' Lookaround team was that we would, one day, produce issues of Lookaround of over 100 pages. We achieved that in November with an issue of 104 pages, 12 more than our previous best. And this issue is 100 pages. We still have a way to go to achieve Dennis's regular output of 116 – but it's good to have a target.

Of course this is a 'double' issue, so it's expected to be bigger, but I am especially gratified by the number of new and renewing advertisers in this edition, especially as many of them aren't specifically Christmas adverts. As mentioned last month, our finances are in a relatively good state hence we've been able to do the

# Seasons Greetings To You



**From All  
At  
LOOKAROUND**



traditional colour edition for Christmas.

On the subject of advertising, and particularly invoicing for advertising, I'd like to apologise to those advertisers who have recently received very late invoices for advertisements placed at various times over the course of the past year. Our system for payment recording and follow up hasn't been as good as it should have been. But we now have a system which should allow us to know where we are with each advert placed, so as of February 2020 we will be issuing invoices where appropriate and receipts where requested.

I am very glad to see that our predecessor, and my mentor, Dennis, is recovering well from recent illness (see his Personal ad on page 78). I was particularly pleased to pictures of his breakfast in Duo on the Facebook forum, a sure sign of a returning healthy appetite. Our best wishes go to him for his continuing recovery, and our thanks go to him for his ongoing support of Lookaround. There wouldn't be anything here without you Dennis!

We are still looking for somebody who can help with the more 'technical' aspects of putting Lookaround together, i.e. compiling each edition using Microsoft Publisher and creating adverts. I'm quite happy to do it for as long as I need to, but if I become unavailable for any reason, then we have no backup. So if you have the skills, or the inclination to acquire the skills, and some time available then do let us know.

*Ed Welti*

## **USEFUL TELEPHONE NUMBERS**

### **Age UK South Lakeland**

030 300 30003

### **Electricity in any area**

105

### **Medical in any area**

111

### **Pension Service Surgery**

Stricklandgate House every Tuesday  
1400 - 1600  
01539 795000 or 0845 6060265

### **Police in any area**

101

### **Sight Advice South Lakes**

01539 769055

### **South Lakes Citizens Advice Bureau**

03444 111 444

### **South Lakeland District Council**

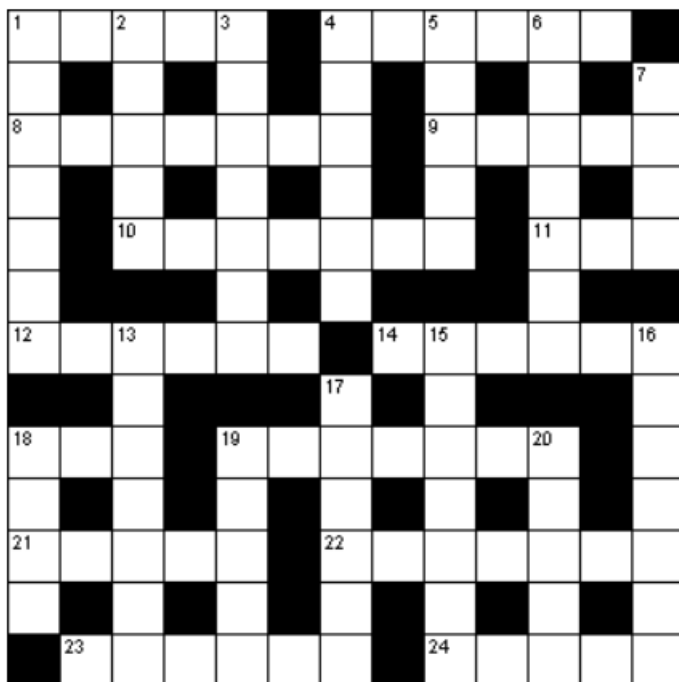
01539 733 333

### **Yorkshire Dale National Park**

0300 456 0030

*If you would like to see any numbrs listed here, please let us know.*

PUZZLE (SOLUTION ON PAGE 87)



**Across**

1. Large creature, cow's tail looks healthy (5)
4. Tin primate or starter (6)
8. Shred tempo for syncopated music (7)
9. Find perfection inside Alaska (5)
10. Hawaiian garland, certain relaxation (7)
11. Oddment found in pendant (3)
12. Star gets to discover objective (6)
14. Bravest try to find room in church (6)
18. Snow runner wrapped in buckskin (3)
19. Cop able to rearrange inert medication (7)
21. Young woman is out of order (5)
22. Find strength, request a minaret (7)
23. Uses caper to find a way out (6)
24. Replace initial calories in a dairy product with a dead end aspiration (5)

**Down**

1. Conflict and declamation result in court order (7)
2. Spiritual being viewed from different angle (5)
3. Building discovered if ice found (7)
4. Confused her cub with infant (6)
5. Lacking experience, twisted a vein (5)
6. Introduce a gift (7)
7. Foreign leader showed the way or ran (4)
13. Spanish affirmative during monsoon produces fruit (7)
15. Turn mere lad into stone (7)
16. Measure limb on sailing ship (7)
17. Has sleep trouble, essentially (6)
18. Box or spring ring leader (4)
19. Previous Australian leader makes dough (5)
20. I love various Mediterranean fruit (5)

PUZZLE (SOLUTION ON PAGE 87)

|    |    |    |    |    |    |    |    |    |    |    |    |    |
|----|----|----|----|----|----|----|----|----|----|----|----|----|
|    | 17 | 23 | 8  | 8  | 26 | 13 |    | 11 | 5  | 26 | 24 | 18 |
| 26 |    | 3  |    | 5  |    | 24 |    | 26 |    | 18 |    | 21 |
| 9  | 23 | 1  | 11 | 6  |    | 12 | 21 | 25 | 26 | 1  | 24 | 12 |
| 26 |    | 22 |    | 21 |    | 10 |    | 2  |    | 24 |    | 22 |
| 25 | 21 | 2  | 21 | 25 | 4  | 21 |    | 21 | 3  | 16 | 21 | 25 |
|    |    | 21 |    |    |    | 25 |    | 3  |    |    |    | 23 |
| 20 | 22 | 18 | 24 | 26 | 12 |    | 14 | 23 | 22 | 25 | 23 | 1  |
| 24 |    |    |    | 12 |    | 11 |    |    |    | 26 |    |    |
| 11 | 26 | 12 | 21 | 25 |    | 7  | 26 | 1  | 4  | 16 | 21 | 25 |
| 12 |    | 22 |    | 22 |    | 6  |    | 26 |    | 16 |    | 24 |
| 22 | 1  | 3  | 24 | 15 | 23 | 4  |    | 24 | 17 | 5  | 22 | 22 |
| 18 |    | 17 |    | 26 |    | 24 |    | 20 |    | 21 |    | 16 |
| 21 | 19 | 26 | 12 | 16 |    | 12 | 7  | 21 | 25 | 25 | 6  |    |

|    |    |    |    |    |    |    |    |    |    |    |    |    |
|----|----|----|----|----|----|----|----|----|----|----|----|----|
| 1  | 2  | 3  | 4  | 5  | 6  | 7  | 8  | 9  | 10 | 11 | 12 | 13 |
| 14 | 15 | 16 | 17 | 18 | 19 | 20 | 21 | 22 | 23 | 24 | 25 | 26 |

**PEOPLE'S HALL HIRE RATES**

**Main Hall**

| Session      | Z   | A   | B   | C      | D   | All day |
|--------------|-----|-----|-----|--------|-----|---------|
| Local Hirers | £10 | £20 | £20 | £15    | £36 | £90     |
| Other Hirers | £15 | £30 | £30 | £22.50 | £54 | £136.50 |
| Commercial   | £20 | £40 | £40 | £30    | £72 | £182    |

**Committee Room**

|              |  |        |        |     |        |        |
|--------------|--|--------|--------|-----|--------|--------|
| Local Hirers |  | £15    | £15    | £10 | £15    | £55    |
| Other Hirers |  | £22.50 | £22.50 | £15 | £22.50 | £82.50 |
| Commercial   |  | £30    | £30    | £20 | £30    | £110   |

## LOOKAROUND DETAILS

### **LOOKAROUND INFORMATION**

The Sedbergh & District 'Lookaround' is edited, published and distributed monthly by the 'Lookaround' editorial team of volunteers and printed by Stramongate Press, Kendal.

The content of 'Lookaround' does not reflect the views of the editors and whilst every effort is made to ensure that information is correct, the editors cannot accept any responsibility for inconvenience caused through errors or omissions; if there is an error in your article or advert, please contact the editor as soon as possible.

The current issue is available from Sedbergh Tourist Information Centre, Sedbergh Mini Market, Sedbergh Post Office and Spar. Also from Dent Stores, the Barbon Churchmouse and by post (please address enquiries to the editor). Back copies are available to read at the History Society Archive at 72 Main Street or online at [www.lookaround.org](http://www.lookaround.org)

Items for the 'Lookaround' should be emailed to:

[editor@sedberghlookaround.org.uk](mailto:editor@sedberghlookaround.org.uk) posted to 'Lookaround' c/o 72 Main Street, Sedbergh, LA10 5AD or deposited in the 'Lookaround' post box at the same address.

### **ARTICLES**

Articles and reports are inserted for free and photographs may be included (depending on space). Articles should ideally be submitted as a word attachment to an email

addressed to the editor rather than as the text of the same email.

The font should be 'Arial', 11point and the piece should be single spaced and with as few 'hard returns' or paragraphs as possible. This is to make the job of proofing and formatting easier and also to ensure that all articles have the same impact and appearance.

Please put the title on the first line at the top of the article and the author's name on the second line. If you include images with your article please indicate where you feel they would be best placed. Conforming to these requests very much helps the proofreaders/formatters in getting your article to the compiler for printing in good time.

We are very happy to accept handwritten or typed pieces, if handwritten please use capitals to help us transcribe the article accurately and again, please place the title on the first line and the author's name on the second line.

### **CALLING ALL ADVERTISERS**

Many of our advert contracts will expire for the February 2020. We will be emailing you to remind you but please don't forget to renew we depend on you.

New advertisers are of course always welcome too.

### **PUBLICATION DETAILS**

Our distribution area is the LA10 Postal District which is Sedbergh & the surrounding villages, but it is sent all round the country & the world.

We are published on the 1st of every month (except January).

February to November is printed black ink on white. The December/

January issue may be in full colour. All copies have a full colour cover by a local photographer.

The closing date for everything is 15th of every month.

### **ADVERTISING**

Please see page 4 for the main points on advertising in Lookaround. Further details can be found below.

### **PERSONAL MESSAGES**

These are £1 each & are for sending Good Wishes, Thank You's, Birthday Greetings, Anniversaries & any other celebration or congratulation. You may also sell personal items but not on a business basis, & also make an appeal for wanted items.

*Details with respect to people Passing Away are inserted for free.*

Please ensure your submission is legible. We want to make sure we publish what you want us to publish.

### **GROUPS AND ORGANISATIONS**

Any organisation that charges an admission, sells items or requires a donation from the public for anything at their event & wishes to include details in *The Lookaround*, are requested to place an Advert with us. This can be supported by text which cannot all be included in the advert. Any report *after* the Event is free. The request for payment for an Advert is to assist with financing *The Lookaround* which has a large printing expense every month. We feel that the Advertising Rates are very reasonable (for the last 18 years). All Adverts for Events automatically have the details entered into the Diary Page at the rear of *The Lookaround*. If organisations do not wish to Advertise with us, details of the Event will still appear on the Diary Page, but no text will be inserted.

### **BUSINESSES**

Adverts for the Rent or Sale of property are not Personals & can only be included as a boxed Advert.

If you are a new advertiser in Lookaround & you order 3 or more adverts, you will receive one free advert & can also include some text explaining who you are, what you are, where you are, etc (which can not all go into an advert) up to about 550 words for free.

If you have more than 3 months of advertising, we will automatically send a renewal reminder should you wish to continue. If you order 10 months, we give you one free (making one whole year). See page 4 for information on how to pay.

### **CHILDREN'S BIRTHDAYS**

Children's Birthdays are included free on the Birthday Page. Please send us the date, name and age of your child before the submission date (15th of the month) of the issue when the birthday should appear.

### **COVER PICTURES**

If you have any pictures to go onto the cover of Lookaround, please send a high definition copy with the location and your name, and you will be credited. If the interest of the picture is in the centre it will be difficult to use as the centre is on the spine. Each half of the picture needs to work as one cover (back is the left hand side, front is the right).

### **LOOKAROUND BY POST**

We will post Lookaround to you in the UK at a cost of £2.00 per issue, or anywhere in the world for £6.00.

### **CONTACT DETAILS**

See page 4.

*Lookaround Editorial Group*



## BED & BREAKFAST

| Proprietor          | Address                                                                                                                                                                                                        | Phone (015396) |
|---------------------|----------------------------------------------------------------------------------------------------------------------------------------------------------------------------------------------------------------|----------------|
| Mrs J Postlethwaite | Bramaskew Farm, Howgill, Sedbergh LA10 5HX (2013/09)<br><i>1D(ES); 1T(ES); CH; TV; P; NP; Di; VB; EM; CW</i><br>e-mail:- <a href="mailto:stay@drawellcottage.co.uk">stay@drawellcottage.co.uk</a>              | 21529          |
| Miss S Thurlby      | 15 Back Lane, Sedbergh LA10 5AQ (2012/12)<br><i>1D; 1T; TVL; CH; DW; P; DR; VB</i><br>e-mail:- <a href="mailto:wheelwright.cottage@homecall.co.uk">wheelwright.cottage@homecall.co.uk</a> Free Wi-Fi available | 20251          |
| Mrs A Bramall       | Summerhill, 7 Highfield Road, Sedbergh LA10 5DH (2013/11)<br><i>Sleeps 6 3D (1ES), 1T (PB), CH, NS, NP*, DR, VB, CB, DFB</i><br>e-mail: <a href="mailto:ali@interact.co.uk">ali@interact.co.uk</a>             | 20360          |
| Mr and Mrs McCririe | Daleslea, Station Road, Sedbergh, LA10 5DL (2019/11)<br><i>Sleeps 6 3D (ES), CH, NS, TV, P, NP, VB</i><br>e-mail: <a href="mailto:Daleslea@outlook.com">Daleslea@outlook.com</a>                               | 21789          |

## CAMPING, CARAVANNING & SELF-CATERING

|                                                      |                                                                                                                                                                                                                                                                                                                                 |       |
|------------------------------------------------------|---------------------------------------------------------------------------------------------------------------------------------------------------------------------------------------------------------------------------------------------------------------------------------------------------------------------------------|-------|
| Mrs S Capp                                           | Scrogg House Farm Cottages, Cautley Road, Sedbergh LA10 5LN<br>Boskins: <i>Sleeps 4; D/T(S King); ES x 2; L; P; CH; DW; DR; WiFi</i><br>Speight Cottage: <i>Sleeps 2; D(King); L; P; DR; CH; WiFi; Hot Tub</i><br>e-mail: <a href="mailto:sam@thecapps.co.uk">sam@thecapps.co.uk</a>                                            | 34032 |
| Mr E Welti                                           | 8, Guldrey Terrace, Sedbergh, Cumbria, LA10 5DT<br><i>Sleeps 1-5; 1D; 1T; 1S; CH; TVL; P; NS</i><br>e-mail: <a href="mailto:ed_welti@btinternet.com">ed_welti@btinternet.com</a>                                                                                                                                                | 20770 |
| Mrs A Bramall                                        | Summerhill, 7 Highfield Road, Sedbergh LA10 5DH (2013/11)<br><i>Self-Catering Sleeps 6</i><br>e-mail: <a href="mailto:ali@interact.co.uk">ali@interact.co.uk</a>                                                                                                                                                                | 20360 |
| Borrett Barn Caravan, Marthwaite, Sedbergh (2018/04) | <i>Sleeps 4 people; D; T; CH; L; P; NS</i>                                                                                                                                                                                                                                                                                      | 21175 |
| Borrett Barn Flat, Marthwaite, Sedbergh (2018/04)    | <i>Sleeps 4 people; D; T; CH; L; P; NS</i>                                                                                                                                                                                                                                                                                      | 21175 |
| Ann Newbold                                          | The Pele Tower, Killington Hall, Killington, LA6 2HA (2019/11)<br><i>Luxury Self Catering Sleeps 2-4 people 2D ES /1D 1T ES; CH; L; TV; NP; NC</i><br>e-mail: <a href="mailto:hello@killingtontower.co.uk">hello@killingtontower.co.uk</a><br>website: <a href="http://www.killingtontower.co.uk">www.killingtontower.co.uk</a> | 45845 |

### KEY

F = Family Rm; D = Double Rm; S = Single Rm; T = Twin Rm; ES = En Suite; PB = Private Bathroom CH = Central Heating; L = Lounge; TV = TV in all Rooms; TVL = TV Lounge; P = Parking; DA = Disabled Access; NS(B) = No Smoking (Bedrooms); NP(\*) = No Pets (\* by arrangement); DW = Dogs Welcome; DR = Drying Room; Di = Dinners; VB = Vegetarian Breakfast; CB = Celiac Breakfast; EM = Evening Meal; NC = No Children; CW = Children Welcome; TL = Table Licence; DFB = Dairy Free Breakfast

## PUZZLE SOLUTIONS

|   |   |   |   |   |   |   |   |   |   |   |   |   |
|---|---|---|---|---|---|---|---|---|---|---|---|---|
| W | H | A | L | E |   | C | A | N | A | P | E |   |
| A |   | N |   | D |   | H |   | A |   | R |   | F |
| R | A | G | T | I | M | E |   | I | D | E | A | L |
| R |   | E |   | F |   | R |   | V |   | S |   | E |
| A |   | L | E | I | S | U | R | E |   | E | N | D |
| N |   |   |   | C |   | B |   |   |   | N |   |   |
| T | A | R | G | E | T |   | V | E | S | T | R | Y |
|   | A |   |   |   |   | H |   | M |   |   |   | A |
| S | K | I |   | P | L | A | C | E | B | O |   | R |
| P |   | S |   | A |   | S |   | R |   | L |   | D |
| A | M | I | S | S |   | S | T | A | M | I | N | A |
| R |   | N |   | T |   | L |   | L |   | V |   | R |
|   | E | S | C | A | P | E |   | D | R | E | A | M |

|    |    |    |    |    |    |    |    |    |    |    |    |    |    |
|----|----|----|----|----|----|----|----|----|----|----|----|----|----|
|    |    | 17 | 23 | 8  | 8  | 26 | 13 |    | 11 | 5  | 26 | 24 | 18 |
|    |    | G  | U  | F  | F  | A  | W  |    | P  | L  | A  | I  | D  |
| 26 |    |    | 3  |    | 5  |    | 24 |    | 26 | A  | 18 |    | 21 |
| A  |    |    | N  |    | L  |    | I  |    | A  |    | D  |    | E  |
| 9  | 23 | 1  | 11 | 6  |    |    | 12 | 21 | 25 | 26 | 1  | 24 | 12 |
| J  | U  | M  | P  | Y  |    |    | C  | E  | R  | A  | M  | I  | C  |
| 26 |    |    | 22 |    | 21 |    | 10 |    | 2  |    | 24 |    | 22 |
| A  |    |    | O  |    | E  |    | K  |    | V  |    | I  |    | O  |
| 25 | 21 | 2  | 21 | 25 | 4  | 21 |    |    | 21 | 3  | 16 | 21 | 25 |
| R  | E  | V  | E  | R  | S  | E  |    |    | E  | N  | T  | E  | R  |
|    |    |    | 21 |    |    | 25 |    |    | 3  |    |    |    | 23 |
|    |    |    | E  |    |    | R  |    |    | N  |    |    |    | U  |
| 20 | 22 | 18 | 24 | 26 | 12 |    | 14 | 23 | 22 | 25 | 23 | 1  |    |
| Z  | O  | D  | I  | A  | C  |    | Q  | U  | O  | R  | U  | M  |    |
| 24 |    |    |    |    | 12 |    | 11 |    |    |    | 26 |    |    |
| I  |    |    |    |    | C  |    | P  |    |    |    | A  |    |    |
| 11 | 26 | 12 | 21 | 25 |    |    | 7  | 26 | 1  | 4  | 16 | 21 | 25 |
| P  | A  | C  | E  | R  |    |    | H  | A  | M  | S  | T  | E  | R  |
| 12 |    | 22 |    | 22 |    | 6  |    | 26 | A  |    | T  |    | 24 |
| C  |    | O  |    | O  |    | Y  |    | A  |    | 16 |    |    | I  |
| 22 | 1  | 3  | 24 | 15 | 23 | 4  |    | 24 | 17 | 5  | 22 | 22 |    |
| O  | M  | N  | I  | B  | U  | S  |    | I  | G  | L  | O  | O  |    |
| 18 |    | 17 | 26 |    | 24 |    |    | 20 | Z  | 21 |    |    | 16 |
| D  |    | G  | A  |    | I  |    |    |    |    | E  |    |    | T  |
| 21 | 19 | 26 | 12 | 16 |    | 12 | 7  | 21 | 25 | 25 | 6  |    |    |
| E  | X  | A  | C  | T  |    | C  | H  | E  | R  | R  | Y  |    |    |

|    |    |    |    |    |    |    |    |    |    |    |    |    |  |
|----|----|----|----|----|----|----|----|----|----|----|----|----|--|
| 1  | 2  | 3  | 4  | 5  | 6  | 7  | 8  | 9  | 10 | 11 | 12 | 13 |  |
| M  | V  | N  | S  | L  | Y  | H  | F  | J  | K  | P  | I  | W  |  |
| 14 | 15 | 16 | 17 | 18 | 19 | 20 | 21 | 22 | 23 | 24 | 25 | 26 |  |
| Q  | B  | T  | G  | D  | X  | Z  | E  | O  | U  | I  | R  | A  |  |

| <b>Organisation</b>                  | <b>Updated</b> | <b>Contact</b>    | <b>Tel:</b>                 | <b>015396</b> |
|--------------------------------------|----------------|-------------------|-----------------------------|---------------|
| Age UK South Lakeland                | 07/18          | Helpline          | 030 300                     | 30003         |
| Aglow International                  | 04/15          | Mrs Armitstead    | 015242                      | 71062         |
| Allotments Association - Dent        | 02/14          | Mrs Owen          | Dent:                       | 25505         |
| Allotments Association - Sedbergh    | 02/09          | Mr Atkins         | Sed:                        | 20031         |
| Angling Association                  | 01/09          | Mr Wright         | Dent:                       | 25533         |
| Art Society - Sedbergh               | 04/19          | Mrs Alison        | jen.alison10@gmail.com      |               |
| Badminton - Sedbergh                 | 10/08          | Mr Wheatley       | 07816                       | 437500        |
| Beekeepers Association               | 04/15          | Mrs Pauley        | 015242                      | 51549         |
| Bell Ringers (StAS)                  | 02/14          | Mrs Sharrocks     | Sed:                        | 20754         |
| Book Group                           | 01/09          | Mrs Dodds         | Sed:                        | 20308         |
| Bowling Club - Sedbergh              | 09/14          | Mrs Killops       | Sed:                        | 20279         |
| Bridge Club                          | 11/19          | Mr Alison         | 015398                      | 24666         |
| Bridging the Gap                     | 05/14          | Mr Richardson     | 01772                       | 561323        |
| British Legion                       | 12/15          | Mr Parratt        | Sed:                        | 20964         |
| Canoe Club - Sedbergh                | 01/09          | Mr Hinson         | Sed:                        | 20118         |
| Caving Club - Kendal                 | 01/09          | Mr Teal           | Sed:                        | 20721         |
| Chamber of Trade                     | 12/12          | Mrs Sayner        | Sed:                        | 20935         |
| Christian Aid                        | 11/17          | Mrs Thompson      | Sed:                        | 22023         |
| Citizens Advice Bureau               | 12/16          | Kendal            | 03444                       | 111444        |
| Community Orchard Group              | 06/16          | Mrs Parratt       | Sed:                        | 20964         |
| Cobweb Orchestra                     | 04/19          | Mrs Blackwell     | Sed:                        | 20056         |
| Community Swifts (Sedbergh)          | 03/16          | Mrs Hoare         | 01539                       | 824043        |
| Conservative Association - Sedbergh  | 01/09          | Mr Beck           | Sed:                        | 20336         |
| Cricket Club - Sedbergh              | 02/15          | Mr Hoggarth       | 01539                       | 583793        |
| Cumbria Wildlife Trust               | 01/09          | Mrs Garnett       | Sed:                        | 21138         |
| Dementia Friendly Community          | 10/18          | Dr Ripley         | mylesripley@btinternet.com  |               |
| Dentdale Choir                       | 04/17          | Mr Feltham        | Dent:                       | 25689         |
| Dentdale Head to Foot                | 04/17          | Mr Steele         | Dent:                       | 25054         |
| Dent Meditation Centre               | 09/14          | Mrs Brooke        | 07582                       | 017396        |
| Dent Memorial Hall                   | 01/09          | Mrs McClurg       | Dent                        | 25446         |
| Dentdale Players                     | 01/09          | Mr Duxbury        | Dent                        | 25535         |
| Dog Training - Sedbergh              | 01/09          | Mrs Robertsonshaw | Sed:                        | 20316         |
| Sedbergh Environmental Group         | 02/19          | Mr Chapple        | 07891                       | 908025        |
| Farfield Mill Arts & Heritage Centre | 10/18          | Mrs Mowbray       | Sed:                        | 21958         |
| Firbank Church Hall                  | 09/11          | Mr Woof           | Sed:                        | 21343         |
| First Responders - Dent              | 01/09          | Mrs Pilgrim       | Dent:                       | 25589         |
| First Responders - Sedbergh          | 02/15          | Mr Cobb           | Sed:                        | 22541         |
| Football Club - Dent                 | 01/09          | Mrs Mitchell      | Dent:                       | 25432         |
| Football Club Junior - Sedbergh      | 11/17          | Mr Todd           | 07979                       | 569428        |
| Football Club Senior - Sedbergh      | 07/14          | Mr Parkin         | Sed:                        | 20585         |
| Garsdale Village Hall                | 11/16          | Mrs Labbate       | Sed:                        | 22114         |
| Golf Club                            | 12/08          | Mr Gardner        | Sed:                        | 21551         |
| Good Companions - Dent               | 04/16          | Mrs Woof          | Dent:                       | 25212         |
| Grief Share                          | 02/19          | Duty Team Member  | 07498                       | 870267        |
| Help Tibet Northern Branch           | 01/09          | Mrs Howarth       | Sed:                        | 20090         |
| History Society                      | 01/09          | Mr Cann           | Sed:                        | 20771         |
| Howgill's Harmony                    | 01/09          | Mr Burbidge       | Sed:                        | 21166         |
| Howgill Harriers                     | 03/17          | Mrs Houghton      | admin@howgillharriers.co.uk |               |
| Howgill Village Hall                 | 01/09          | Mrs Stainton      | Sed:                        | 20665         |
| Kent Lune Trefoil Guild              | 12/13          | Mrs Gilfellow     | 01524                       | 781907        |
| Killington Parish Hall               | 08/13          | Mr Mather         | 015242                      | 76333         |
| Killington Sailing Association       | 10/18          | Dr Ripley         | mylesripley@btinternet.com  |               |
| Labour Supporters Group              | 12/17          | Mr Cross          | Sed:                        | 22566         |



|                                   |       |                                            |        |        |
|-----------------------------------|-------|--------------------------------------------|--------|--------|
| Ladies National Farmers Union     | 12/11 | Mrs Sandys-Clarke                          | Sed:   | 21246  |
| Liberal Democrats                 | 12/08 | Mrs Minnitt                                | 015242 | 72520  |
| Little People                     | 04/19 | Mrs Lidiard                                | 07734  | 699723 |
| Lunch Club                        | 03/18 | Mrs l'Anson                                | Sed:   | 21757  |
| Lunesdale Archaeology Society     | 11/18 | Committee lunesdale.archaeology@gmail.com  |        |        |
| Meals On Wheels                   | 04/19 | Mr Cowperthwaite                           | 07961  | 925003 |
| Messy Church                      | 09/14 | Mrs Raw                                    | Sed:   | 20542  |
| Methodist Church Hall             | 04/14 | Mr Allen                                   | Sed:   | 20194  |
| Orchestra (Sedbergh)              | 11/11 | Mrs Smith                                  | Sed:   | 21196  |
| Parent Support Group              | 01/09 | Mrs Goad                                   | Sed:   | 20402  |
| Parish Council - Dent             | 04/17 | Mr Thornley                                | Dent:  | 25185  |
| Parish Council - Garsdale         | 12/14 | Mr Johns                                   | Sed:   | 22170  |
| Parish Council - Sedbergh         | 08/16 | Mrs Hassam                                 | 07966  | 134554 |
| People's Gym                      | 12/19 | membership@sedberghgym.club                |        |        |
| People's Hall                     | 07/19 | Tourist Info Centre                        | Sed:   | 20125  |
| Peppercot Club - Sedbergh         | 01/09 | Mrs Smith                                  | Sed    | 21196  |
| Pistol and Rifle Club             | 01/09 | Mr Middlemiss                              | Sed:   | 20662  |
| Playground - Sedbergh             | 04/14 | Mrs Hassam                                 | Sed:   | 20125  |
| Playgroup - Sedbergh              | 09/14 | Mrs Kitchen                                | Sed:   | 20826  |
| Playing Field - Sedbergh          | 10/09 | Mr Longlands                               | Sed:   | 20885  |
| Red Squirrel Group - Sedbergh     | 09/19 | Mr Hopps sedberghredsquirrels100@gmail.com |        |        |
| Residents Association - Sedbergh  | 01/09 | Mrs Capstick                               | Sed:   | 20816  |
| Rose Community Theatre            | 08/15 | Mrs Gold-Wood                              | Sed:   | 21808  |
| Schools                           |       |                                            |        |        |
| Dent Primary                      | 03/13 | School                                     | Dent:  | 25259  |
| Dent Primary - Friends of         | 03/13 | School                                     | Dent:  | 25259  |
| Sedbergh Primary                  | 01/09 | School                                     | Sed:   | 20510  |
| Settlebeck                        | 01/09 | School                                     | Sed:   | 20383  |
| Settlebeck PTFA                   | 04/15 | Mr Hartley                                 | Dent:  | 25317  |
| Sedbergh School                   | 01/09 | School                                     | Sed:   | 20303  |
| Scouts - Beavers                  | 11/15 | Mr Mawdsley                                | Sed:   | 20723  |
| Scouts - Cubs                     | 11/15 | Mr Mawdsley                                | Sed:   | 20723  |
| Scouts                            | 01/09 | Mr Mawdsley                                | Sed:   | 20723  |
| Scouts - Explorers                | 11/15 | Mrs Colton                                 | 07789  | 906421 |
| Sedbergh United Charities         | 09/19 | Mr Sykes                                   | 07786  | 384917 |
| Sight Advice South Lakeland       | 04/15 | Miss Harper                                | Sed:   | 20613  |
| Sing Joyfully! (Casterton)        | 09/16 | Mrs Micklethwaite                          | 07952  | 601568 |
| South Lakeland Carers Association | 01/09 | Mrs Woof                                   | Dent:  | 25212  |
| Spellbound Theatre                | 11/17 | Miss Pakeman                               | Sed:   | 21279  |
| Squash Club                       | 10/15 | Mr Bannister                               | Sed:   | 21664  |
| Swimming Club                     | 12/19 | Sedberghswimclub@gmail.com                 |        |        |
| Swimming Group for Over 50's      | 09/18 | Mr Beare                                   | Sed:   | 21339  |
| Tennis Club                       | 04/19 | Mr Lewes                                   | Sed:   | 20052  |
| Town Band                         | 01/09 | Mrs Waters                                 | Sed:   | 20457  |
| Town Twinning Group               | 09/14 | Mrs Garnett                                | Sed:   | 21138  |
| Voluntary Car Scheme              | 11/18 | Mrs Skomp                                  | Sed:   | 20305  |
| Walking & Cycling Group           | 08/14 | Miss Nelson                                | Sed:   | 21770  |
| Westmorland Gazette Correspondent | 07/19 | Mr Welti                                   | Sed:   | 20770  |
| White Hart Sports and Social Club | 01/09 | The Committee                              | Sed:   | 20773  |
| Women's Institute - Dentdale      | 06/14 | Mrs Smith                                  | Dent:  | 25607  |
| Women's Institute - Howgill       | 04/13 | Mrs Hoggarth                               | 01539  | 824663 |
| Women's Institute - Killington    | 01/09 | Mrs Sharrocks                              | Sed:   | 20754  |
| Women's Institute - Sedbergh      | 12/19 | Mrs Morrison                               | Sed:   | 20209  |
| Young Cumbria                     | 01/09 | Mrs Hartley                                | 01524  | 781177 |
| Young Farmers Club                | 11/15 | Miss Thompson                              | 07590  | 115844 |
| Young Kidz                        | 01/09 | Mrs Baines                                 | Sed:   | 21287  |

\* = Latest Amendments

If there are any Groups missing and/or contact details are incorrect, please let us know.

# DIARY OF EVENTS

Dates are held up to 09/12/2020.

Dates in **BOLD** are start & finish events.

Numbers in Brackets indicate Advert/Article on a Page.  
Month in Bracket relates to issue that details last appeared.

## DECEMBER 2019

|    |      |                                              |      |
|----|------|----------------------------------------------|------|
| 01 | 1800 | Advent Service                               | StAS |
| 03 |      | WIK Xmas Dinner - NEW DATE (Oct)             | GC   |
| 03 | 1000 | Grief Share                                  | CCCN |
| 03 | 1930 | Ladies NFU - Life as a community PC (Nov)    | PH   |
| 03 | 1930 | Xmas Concert - Ingleton Church               |      |
| 03 | 1930 | Town Band Spectacular (28,5)                 | StAS |
| 04 | 1000 | Coffee Morning - Bellringers (3)             | StAS |
| 04 | 1800 | Sedbergh Late Night Opening (1)              |      |
| 05 | 1900 | Howgill Firbank WI Xmas Party                | TBA  |
| 05 | 1930 | Sedbergh Parish Council Meeting (30)         | PH   |
| 06 |      | Dent Folk Carols Weekend                     | DMH  |
| 06 | 1400 | Dentdale head to foot Jacobs Join (Nov)      | DMH  |
| 06 | 1900 | Informal Carols - Casterton Church           |      |
| 06 | 1930 | Lakeland Voice Dent (26)                     |      |
| 07 |      | Dentdale over 60's Christmas luncheon        | DMH  |
| 07 | 1000 | St Andrew's Church Dent Coffee Morning       | DMH  |
| 07 | 1230 | Dentdale Over 60s Xmas lunch                 | DMH  |
| 08 |      | Dent Folk Carols Weekend                     | DMH  |
| 08 | 1530 | Xmas Concert - KL Church                     |      |
| 08 | 1700 | Sedbergh School Advert Service (Nov)         | SS   |
| 10 | 1400 | WIK- TBA (Jul)                               | PH   |
| 10 | 1930 | Domino Drive                                 | FCH  |
| 10 | 1930 | Living Christmas Concert - Casterton Church  |      |
| 11 | 1915 | WID - Christmas Meal                         | TBA  |
| 11 | 1930 | HS - Stone circles (Oct)                     | StAS |
| 11 | 1930 | WIS - Christmas Dinner                       | TBA  |
| 12 |      | Election day                                 | PH   |
| 12 | 1200 | Age UK - Sedbergh Lunch Club                 |      |
| 13 | 1800 | Family Christmas Pantomime (12)              | PH   |
| 14 |      | Kendal Folk Carols - Kendal Mkt Place (Sep)  |      |
| 14 |      | Lakeland Voice Kendal Marketplace (26,6)     |      |
| 14 | 930  | Artisan Market Sedbergh (14)                 |      |
| 14 | 1900 | Five in a Bar Concert (16)                   | StAS |
| 14 | 1930 | Carol Singing                                | FCH  |
| 15 |      | Settle Carlisle Train Singing Weekend (26,6) |      |
| 15 | 1100 | Winter Solstice Meditation (15)              | MCD  |
| 17 | 1000 | Grief Share                                  | CCCN |
| 17 | 1930 | Ladies NFU Meeting                           | PH   |
| 19 | 1900 | Xmas domino drive                            | HVH  |
| 22 | 1630 | Walking Nativity (22)                        | CCCN |
| 22 | 1800 | Carol Service (Nov)                          | StAS |
| 24 | 2300 | Midnight Communion                           | StAS |
| 25 |      | Christmas Day                                |      |
| 25 | 1030 | Christmas Family Communion                   | StAS |
| 26 |      | Boxing Day                                   |      |
| 29 | 1030 | United Service                               | StAS |
| 31 |      | New Years Eve at the Dalesman (54)           |      |

## JANUARY 2020

|    |      |                                        |      |
|----|------|----------------------------------------|------|
| 01 |      | New Years Day at the Dalesman (55)     |      |
| 07 |      | Cheng Hsin - workshop with Brendan Lea | TBA  |
| 08 | 1930 | WIS Upcycling (45)                     | PH   |
| 09 | 1930 | Sedbergh Parish Council Meeting (30)   | PH   |
| 10 | 1900 | Embodied Mind - Mindful Body (14,18)   | CCCN |

|    |      |                                           |      |
|----|------|-------------------------------------------|------|
| 14 | 1930 | Domino Drive                              | FCH  |
| 15 | 1930 | HS - Icehouses and the trade in ice (Oct) | StAS |
| 17 | 1330 | Art Society - Mixed Media (Oct)           | CCCN |
| 17 | 1930 | Barbon Agricultural Soc Domino drive (57) | BVH  |
| 18 | 1000 | Art Society - Painting day (Oct)          | CCCN |
| 21 |      | Sight Advice meeting (Nov)                | PH   |
| 21 | 1400 | Sight Advice Dignity in Dementia (58)     | PH   |
| 21 | 1400 | SASL Sedbergh Group                       | PH   |
| 22 | 1930 | Cumbria Wildlife - East Greenland         | StAS |
| 25 |      | Burns Night Extra with Denis Westmoreland | PH   |
| 26 | 1930 | Appleby Hall Trio Volant (Oct)            |      |
| 29 | 930  | Yoga Brunch at Malabar (69)               |      |

## FEBRUARY 2020

|    |      |                                         |      |
|----|------|-----------------------------------------|------|
| 05 | 1930 | HS - Markets to supermarkets (Oct)      | StAS |
| 07 | 1930 | AS AGM - Photographs for Painting (Oct) | CCCN |
| 08 | 1000 | Art Society - Gum and Ink (Oct)         | CCCN |
| 09 | 1930 | Appleby Hall Jamal Aliyev (Cello) (Oct) |      |
| 11 | 1930 | Domino Drive                            | FCH  |
| 12 | 1930 | WIS Saxophone and its musi              | PH   |
| 13 |      | Art Soc Portrait group (23)             | CCCN |
| 18 |      | Sight Advice meeting (Nov)              | PH   |
| 18 | 1400 | SASL Sedbergh Group                     | PH   |
| 19 | 1930 | HS - History of Zreze (Oct)             | StAS |
| 22 | 1930 | Domino Drive                            | FCH  |
| 26 | 1930 | Cumbria Wildlife - Smardale and Waitby  | StAS |

## MARCH 2020

|    |      |                                           |      |
|----|------|-------------------------------------------|------|
| 01 | 1930 | Appleby Hall Cumbria Film Archive (Oct)   |      |
| 04 | 1930 | HS - Thorns, Ribbleshead (Oct)            | StAS |
| 05 |      | Sedbergh Orchestra Concert (27)           | tba  |
| 07 | 1000 | Art Soc - Watercolour landscapes (Oct)    | CCCN |
| 10 | 1930 | Domino Drive                              | FCH  |
| 11 | 1930 | WIS Mutiny on the Bounty and Cumbria      | PH   |
| 17 |      | Sight Advice meeting (Nov)                | PH   |
| 17 | 1400 | SASL Sedbergh Group                       | PH   |
| 18 | 1930 | HS - The many worlds of Adam Sedgwick     | StAS |
| 21 | 1900 | History Society AGM (Oct)                 | StAS |
| 22 | 1930 | Appleby Concerts - Sacconi String Quartet |      |
| 25 | 1930 | Cumbria Wildlife - Freerange Children     | StAS |

## APRIL 2020

|    |      |                                    |      |
|----|------|------------------------------------|------|
| 08 | 1930 | WIS Theatre by the lake and beyond | PH   |
| 21 |      | Sight Advice meeting (Nov)         | PH   |
| 21 | 1400 | SASL Sedbergh Group                | PH   |
| 24 | 1330 | Art Society - Line and Wash (Oct)  | CCCN |
| 25 | 1400 | Sedbergh Spring Show (68)          | PH   |

All entries in the Diary are free and helps other organisations to make their own plans for events. If you have it in your Diary, please put it in ours.

**COVER PHOTO**  
**A chilly day on the fells**  
*Ed Welti*

### Regular Events and Meetings

|      |                     |                        |          |
|------|---------------------|------------------------|----------|
| 1000 | Every Sunday        | Free Entry to Locals   | FM       |
| 1600 | 3rd Sunday          | Messy Church           | CCCN     |
| 1030 | Every Monday        | Sedbergh Songsters     | GH       |
| 1730 | Every Monday #      | Brownies               | CCCN     |
| 1400 | 1st Monday          | Bridging the Gap       | MC       |
| 1930 | 1st Monday          | Dent Parish Council    | DMH      |
| 1930 | 1st Monday          | People's Hall          | PH       |
| 1900 | 3rd Monday          | Chamber of Trade       | PH       |
| 1430 | Last Monday         | Tea & Company          | CCCN     |
| 0930 | Every Tuesday       | Drop-in & Relax        | MCD      |
| 1000 | 1st and 3rd Tuesday | Grief Share            | CCCN     |
| 1215 | Every Tuesday       | Over 50's Swimming     | SS Baths |
| 1330 | Every Tuesday       | Knit & Natter          | GH       |
| 1830 | Every Tuesday       | Cub Scouts             | SHQ      |
| 1830 | Every Tuesday       | Swimming Club          | SS       |
| 1900 | Every Tuesday       | Environmental Group    | Red Lion |
| 1930 | Every Tuesday       | Bridge Club            | WHC      |
| 1400 | 2nd Tuesday         | Killington WI          | PH       |
| 1400 | 3rd Tuesday         | Sight Advice Sth Lakes | PH       |
| 1930 | 3rd Tuesday         | Ladies NFU             | PH       |
| 0830 | Every Wednesday     | Sedbergh Market        | JLCP     |
| 1000 | Every Wednesday     | Coffee Morning         | StAS     |

See Group Page for contact details & Diary Page for Keys

### Regular Events and Meetings

|      |                     |                          |                 |
|------|---------------------|--------------------------|-----------------|
| 1315 | Every Wednesday     | Art Society              | PH              |
| 1400 | Every Wednesday     | Age UK IT Support        | L               |
| 1730 | Every Wednesday     | Sedbergh Juniors         | PH              |
| 1730 | Every Wednesday #   | Beaver Scouts            | SHQ             |
| 1900 | Every Wednesday     | Sedbergh Town Band       | SSBR            |
| 1930 | Every Wednesday     | Sedbergh Seniors         | PH              |
| 1930 | 1st & 3rd Wednesday | History Society (Winter) | SSAT            |
| 1915 | 2nd Wednesday       | Dentdale WI              | DMH             |
| 1930 | 2nd Wednesday       | Sedbergh WI              | PH              |
| 1400 | Every Thursday      | Community Social         | Gladstone House |
| 1830 | Every Thursday      | Swimming Club            | SS              |
| 1400 | 1st & 3rd Thursday  | Child Health/ Baby Club  | PH              |
| 1430 | Every 2 weeks       | Cameo Club               | CCCN            |
| 1430 | 1st Thursday        | Afternoon Cream Tea      | Duo             |
| 1930 | 1st Thursday        | Howgill WI               | FCH             |
| 1200 | 2nd Thursday        | Age UK Lunch Club        | Dalesman        |
| 1915 | 2nd Thursday        | Royal British Legion     | WHC             |
| 1930 | 2nd Thursday        | Sed. Parish Council      | PH              |
| 0930 | Every Friday #      | Little People            | CCCN            |
| 1100 | Every Friday        | Mindfulness Course       | MCD             |
| 1800 | Every Friday        | Cub Scouts               | SHQ             |
| 1930 | Every Friday        | Scouts & Explorers       | SHQ             |
| 1330 | 1st Friday          | Dentdale Club            | DMH             |
| 1000 | Every Saturday      | Swimming Club            | SS              |

# = School Term Time Only

**DIARY KEY**

|       |                                         |
|-------|-----------------------------------------|
| AS    | Art Society                             |
| BC    | Sedbergh Bowling Club                   |
| BF    | Brigflatts                              |
| BVH   | Barbon Village Hall                     |
| CCCN  | Cornerstone Community Church, New St    |
| CM    | Coffee Morning                          |
| CWT   | Cumbria Wildlife Trust                  |
| DCMH  | Dales Countryside Museum, Hawes         |
| DCP   | Dent Car Park                           |
| DCS   | Dentdale Chapel Schoolroom              |
| DHTF  | Dentdale, Head to Foot                  |
| DMH   | Dent Memorial Hall                      |
| DMC   | Dent Methodist Chapel                   |
| FCH   | Firbank Church Hall                     |
| FM    | Farfield Mill                           |
| GC    | Golf Club                               |
| GH    | Gladstone House                         |
| GVH   | Garsdale Village Hall                   |
| HS    | History Society                         |
| HVH   | Howgill Village Hall                    |
| HTH   | Holy Trinity Howgill                    |
| JLCP  | Joss Lane Car Park                      |
| KL    | Kirkby Lonsdale                         |
| KPH   | Killington Parish Hall                  |
| L     | Library, Main Street                    |
| LHCP  | Loftus Hill Car Park                    |
| MC    | Medical Centre                          |
| MCD   | Meditation Centre, Dent                 |
| PH    | People's Hall                           |
| QG    | Queens Gardens                          |
| RFC   | Rugby Football Club                     |
| RR    | Rawthey Room, 72 Main Street            |
| SASL  | Sight Advice South Lakeland             |
| SCC   | Sedbergh Cricket Club                   |
| StAS  | St Andrew's Church, Sedbergh            |
| StAD  | St Andrew's Church, Dent                |
| StJCC | St Johns Church, Cowgill                |
| StJCG | St Johns Church, Garsdale               |
| StMC  | St Mark's Church, Cautley               |
| SIC   | Sedbergh Information Centre, 72 Main St |
| SPS   | Sedbergh Primary School                 |
| SS    | Sedbergh School                         |
| SSAT  | Settlebeck School Academy Trust         |
| SSL   | Sedbergh School Library                 |
| STC   | Sedbergh Tennis Courts                  |
| TBA   | To Be Announced                         |
| WHC   | White Hart Club                         |
| WID   | Women's Institute, Dentdale             |
| WIHF  | Women's Institute, Howgill & Firbank    |
| WIK   | Women's Institute, Killington           |
| WIS   | Women's Institute, Sedbergh             |

**PLACES OF INTEREST TO VISIT IN THE AREA**

|                                                                                 |
|---------------------------------------------------------------------------------|
| Bowling Green, Queens Gardens                                                   |
| Bruce Loch Nature Area, Busk Lane                                               |
| Cautley Spout, A683 towards Kirkby Stephen                                      |
| Community Office, 72 Main Street                                                |
| Cornerstone Community Church, New Street                                        |
| Cumbria Wildlife Trust, Community Office                                        |
| Dent Heritage Centre, Laning, Dent *                                            |
| Farfield Mill, A684 Garsdale Road *<br><i>Free to LA10 Residents on Sundays</i> |
| Friends Quaker Meeting House, Brigflatts                                        |
| George Fox's Quaker Pulpit, Firbank                                             |
| Golf Club, Catholes, Sedbergh *                                                 |
| Information Centre, 72 Main Street                                              |
| History Society, Community Office                                               |
| Holme Working Farm, Middleton *                                                 |
| Holy Trinity Church, Howgill                                                    |
| Jubilee Wood Nature Area, Castlehaw Lane                                        |
| Langstone Fell, A684 Garsdale Foot                                              |
| Motte & Bailey Castle, Castlehaw Lane                                           |
| Pepperpot Folly, Busk Lane                                                      |
| Picnic Site, Ghyllas, Cautley Road                                              |
| Picnic Site, Settlebeck New Bridge                                              |
| Play Ground, Dent Village                                                       |
| Play Ground, People's Hall                                                      |
| Play Ground, Maryfell                                                           |
| Queen's Gardens, Station Road                                                   |
| St. Andrew's Church, Dent                                                       |
| St. Andrew's Church, Main Street, Sedbergh                                      |
| St. Gregory's Church, Vale of Lune                                              |
| St. John's Church, Cowgill                                                      |
| St. John's Church, Firbank                                                      |
| St. John's Church, Garsdale                                                     |
| St. Mark's Church, Cautley                                                      |
| Sedbergh Embroidery, StAS                                                       |
| Tennis Courts, Guldrey Lane *                                                   |
| Winder Fell, above Sedbergh                                                     |
| * = Entry Fee Applicable                                                        |

# BUS SERVICES

| Sedbergh to Blackhall Rd, Kendal via Oxenholme |        |       |      |     | Blackhall Rd, Kendal to Sedbergh via Oxenholme |          |       |      |     |
|------------------------------------------------|--------|-------|------|-----|------------------------------------------------|----------|-------|------|-----|
| Depart                                         | Arrive |       |      |     | Depart                                         | Arrive   |       |      |     |
| 0754 (C, L)                                    | 0838   | M - F | 502  | SCC | 1030                                           | 1056 (L) | M - F | 564  | W   |
| 0940 (L)                                       | 1010   | M - F | 564  | W   | 1300                                           | 1330 (L) | Wed   | 564A | W   |
| 1015 (L)                                       | 1045   | Wed   | 564A | W   | 1330                                           | 1356 (L) | M - F | 564  | W   |
| 1240 (L)                                       | 1310   | M - F | 564  | W   | 1705 (C)                                       | 1745 (L) | M - F | 502  | SCC |
| Sedbergh to Kirkby Stephen                     |        |       |      |     | Kirkby Stephen to Sedbergh                     |          |       |      |     |
| 1749 (L) (C)                                   | 1819   | M - F | 502  | SCC | 0728 (C)                                       | 0754 (L) | M - F | 502  | SCC |
| Sedbergh to Kirkby Lonsdale                    |        |       |      |     | Kirkby Lonsdale to Sedbergh                    |          |       |      |     |
| 0945 (L)                                       | 1018   | Thu   | 567A | W   | 1215                                           | 1248 (L) | Thu   | 567A | W   |
| Sedbergh to Dent                               |        |       |      |     | Dent to Sedbergh                               |          |       |      |     |
| 1330 (L)                                       | 1345   | Wed   | 564A | W   | 1000                                           | 1015 (L) | Wed   | 564A | W   |
| Last Update: May 2018                          |        |       |      |     |                                                |          |       |      |     |

L = Library

SCC = Stagecoach

C = College Days Only

W = Woof's of Sedbergh

*Whilst every effort has been made to ensure that the times shown are up to date, they can change at short notice.*

For Comprehensive up-to-date information ring Traveline 0871 200 22 33 (Open : 7am - 8pm Daily)

| Western Dales Bus S1 Kendal Shuttle<br>Saturdays from 21st December 2019 ufn |      |      |      |      |      |               |               |
|------------------------------------------------------------------------------|------|------|------|------|------|---------------|---------------|
| Dent Station Connecting Trains (see full timetable next page)                |      |      |      |      |      |               |               |
| <i>Dent Station</i>                                                          |      |      |      |      |      |               |               |
| <i>Train to Carlisle</i>                                                     |      | 1048 |      |      | 1815 | 1944          | 19:44         |
| <i>Train to Leeds</i>                                                        |      | 1041 |      |      | 1732 | 1938          | 19:38         |
| Buses From Dent to Kendal                                                    |      |      |      |      |      |               |               |
| Dent Station                                                                 |      |      | 1053 |      |      | 1737          | 1947 <b>S</b> |
| Dent Village                                                                 |      | 0820 | 1108 |      | 1505 | 1752          | 2002 <b>S</b> |
| Sedbergh Maryfell                                                            |      | 0835 | 1123 | 1315 | 1520 | 1807          | 2017 <b>S</b> |
| Sedbergh Library                                                             |      | 0837 | 1125 | 1317 | 1522 | 1809          | 2019 <b>S</b> |
| Sedbergh opp. Morphets                                                       |      | 0839 | 1127 | 1319 | 1524 |               |               |
| Killington M6 Bridge                                                         |      | 0847 | 1135 | 1327 | 1532 |               |               |
| Oxenholme Station                                                            |      | 0857 | 1145 | 1337 | 1542 |               |               |
| Kendal K Village                                                             |      | 0902 | 1150 | 1342 | 1547 |               |               |
| Kendal Blackhall Road                                                        |      | 0908 | 1156 | 1348 | 1553 |               |               |
| Kendal Morrisons                                                             |      | 0913 | 1201 | 1353 | 1558 |               |               |
| Buses From Kendal to Dent                                                    |      |      |      |      |      |               |               |
| Kendal Morrisons                                                             |      | 0923 | 1223 | 1403 | 1608 |               |               |
| Kendal Blackhall Road                                                        |      | 0928 | 1228 | 1408 | 1613 |               |               |
| Kendal K Village                                                             |      | 0933 | 1233 | 1413 | 1618 |               |               |
| Oxenholme Station                                                            |      | 0938 | 1238 | 1418 | 1623 |               |               |
| Killington M6 Bridge                                                         |      | 0948 | 1248 | 1428 | 1633 |               |               |
| Sedbergh opp. Morphets                                                       |      | 0956 | 1256 | 1436 | 1641 |               |               |
| Sedbergh Dalesman                                                            | 0800 | 0958 | 1258 | 1438 | 1643 | 1855 <b>S</b> |               |
| Sedbergh Maryfell                                                            | ..   | 1000 | 1300 | 1440 | 1645 | 1857 <b>S</b> |               |
| Dent Village                                                                 | 0815 | 1015 |      | 1455 | 1700 | 1912 <b>S</b> |               |
| Dent Station                                                                 |      | 1030 |      |      | 1715 | 1927 <b>S</b> |               |
| S = summer time only (British Summer Time)                                   |      |      |      |      |      |               |               |

# BUS SERVICES

## Western Dales Bus S3 Dent/Sedbergh Tuesdays Winter 2019. From Tuesday 17th December 2019 ufn

| Buses From Dent to Hawes                                                                                       |      |      |      |      |
|----------------------------------------------------------------------------------------------------------------|------|------|------|------|
| Dent Village                                                                                                   |      | 0942 | 1144 | 1421 |
| Sedbergh Spar                                                                                                  |      | 0958 | 1200 | 1437 |
| Sedbergh Dalesman                                                                                              |      | 0959 | 1201 | 1438 |
| Sedbergh Maryfell                                                                                              |      | 1001 | 1203 | 1440 |
| Farfield Mill entrance                                                                                         |      | 1003 | 1205 | 1442 |
| Garsdale Street                                                                                                |      | 1012 | 1214 | 1451 |
| Train to Carlisle                                                                                              |      | 1054 | 1222 | 1448 |
| Trains to Leeds                                                                                                |      |      | 1205 |      |
| Coal Road (Garsdale Station turning)                                                                           |      | 1017 | 1219 | 1456 |
| Moorcock Inn                                                                                                   |      | 1018 | 1220 | 1457 |
| Hawes Creamery                                                                                                 |      | 1029 | 1231 | 1508 |
| Hawes Market Place                                                                                             |      | 1031 | 1233 | 1510 |
| Hawes Dales Countryside Museum                                                                                 |      | 1033 | 1235 | 1512 |
| Buses From Hawes to Dent                                                                                       |      |      |      |      |
| Hawes Dales Countryside Museum                                                                                 |      | 1043 | 1320 | 1522 |
| Hawes Market Place                                                                                             |      | 1045 | 1322 | 1524 |
| Hawes Creamery                                                                                                 |      | 1047 | 1324 | 1526 |
| Moorcock Inn                                                                                                   |      | 1058 | 1335 | 1537 |
| Coal Road (Garsdale Station turning)                                                                           |      | 1059 | 1336 | 1538 |
| Train to Carlisle                                                                                              |      | 1054 |      |      |
| Trains to Leeds                                                                                                |      |      |      | 1559 |
| Garsdale Street                                                                                                |      | 1104 | 1341 | 1543 |
| Farfield Mill entrance                                                                                         |      | 1113 | 1350 | 1552 |
| Sedbergh Maryfell                                                                                              |      | 1115 | 1352 | 1554 |
| Sedbergh Library                                                                                               | 0915 | 1117 | 1354 | 1556 |
| Sedbergh opp. Morphets                                                                                         | 0916 | 1118 | 1355 |      |
| Dent Village                                                                                                   | 0932 | 1134 | 1411 |      |
| Western Dales Bus S4 Dent/Sedbergh - Kirkby Stephen/Brough Friday Winter 2019. From Fri 20th December 2019 ufn |      |      |      |      |
| Buses From Dent to Kirkby Stephen/Brough                                                                       |      |      |      |      |
| Dent Village                                                                                                   |      | 1017 |      | 1454 |
| Sedbergh Spar                                                                                                  |      | 1033 | 1300 | 1510 |
| Sedbergh Dalesman                                                                                              |      | 1034 | 1301 | 1511 |
| Sedbergh Maryfell                                                                                              |      | 1036 | 1303 | 1513 |
| Cautley, Cross Keys                                                                                            |      | 1043 | 1310 | 1520 |
| Fat Lamb                                                                                                       |      | 1050 | 1317 | 1527 |
| Kirkby Stephen Station arr                                                                                     |      | 1057 | 1324 | 1534 |
| Train to Carlisle                                                                                              |      | 1106 |      | 1501 |
| Train to Leeds                                                                                                 |      | 1146 |      | 1546 |
| Kirkby Stephen Station dep                                                                                     |      | 1106 | 1324 | 1534 |
| Kirkby Stephen Town                                                                                            |      | 1111 | 1329 | 1539 |
| Kirkby Stephen Co-op                                                                                           |      | 1113 | 1331 | 1541 |
| Brough Clock                                                                                                   |      | 1121 | 1339 | 1549 |
| Buses From Brough/Kirkby Stephen to Dent                                                                       |      |      |      |      |
| Brough Clock                                                                                                   |      | 1131 | 1349 | 1559 |
| Kirkby Stephen Co-op                                                                                           |      | 1139 | 1357 | 1607 |
| Kirkby Stephen Town                                                                                            |      | 1141 | 1359 | 1609 |
| Kirkby Stephen Station arr                                                                                     |      | 1146 | 1404 | 1614 |
| Train to Carlisle                                                                                              |      | 1106 |      | 1501 |
| Train to Leeds                                                                                                 |      | 1146 |      | 1546 |
| Kirkby Stephen Station dep                                                                                     |      | 1151 | 1404 | 1614 |
| Fat Lamb                                                                                                       |      | 1158 | 1411 | 1621 |
| Cautley, Cross Keys                                                                                            |      | 1205 | 1418 | 1628 |
| Sedbergh Maryfell                                                                                              |      | 1212 | 1425 | 1635 |
| Sedbergh Library                                                                                               | 0950 | 1214 | 1427 | 1637 |
| Sedbergh opp. Morphets                                                                                         | 0951 | 1215 | 1428 |      |
| Dent Village                                                                                                   | 1007 |      | 1444 |      |

# BUS SERVICES

**S4/S5Sedbergh – Kirkby Stephen – Ravenstonedale - Kendal via M6 Killington and Castle Green**  
**Thursday Only commencing Thursday 21<sup>st</sup> June 2018 until further notice**

|                                      |              |              |              |
|--------------------------------------|--------------|--------------|--------------|
| Dalesman                             | 09.00        |              |              |
| Sedbergh, Maryfell                   | 09.02        |              |              |
| Cautley, Cross Keys                  | 09.10        |              |              |
| Fat Lamb                             | 09.18        |              |              |
| Kirkby Stephen Station entrance      | 09.24        |              |              |
| Kirkby Stephen Market Place          | 09.29        |              |              |
| Kirkby Stephen Co-op arr             | 09.30        |              |              |
| Kirkby Stephen Co-op dep             | 09.35        | 11.45        | 14.35        |
| Kirkby Stephen, Market St            | 09.36        | 11.46        | 14.36        |
| Kirkby Stephen Station entrance      | 09.41        | 11.51        | 14.41        |
| <i>Trains from Leeds to Carlisle</i> | <i>09.34</i> | <i>11.06</i> | <i>15.01</i> |
| <i>Trains from Carlisle to Leeds</i> | <i>09.20</i> | <i>11.46</i> | <i>14.31</i> |
| Ravenstonedale, Kings Head           | 09.47        | 11.57        | 14.47        |
| Newbiggin on Lune                    | 09.50        | 12.00        | 14.50        |
| Tebay roundabout                     | 09.58        | 12.08        | 14.58        |
| Killington M6 bridge                 | 10.08        | 12.18        | 15.08        |
| Kendal, Castle Green                 | 10.17        | 12.27        | 15.17        |
| Kendal, Blackhall Road               | 10.22        | 12.32        | 15.22        |
| Kendal, Morrisons                    | 10.27        | 12.37        | 15.27        |
|                                      |              |              |              |
| Kendal, Morrisons                    | 10.38        | 13.28        | 15.38        |
| Kendal, Blackhall Road               | 10.45        | 13.35        | 15.45        |
| Kendal, Castle Green                 | 10.50        | 13.40        | 15.50        |
| Killington, M6 bridge                | 10.59        | 13.49        | 15.59        |
| Tebay roundabout                     | 11.09        | 13.59        | 16.09        |
| Newbiggin on Lune                    | 11.17        | 14.07        | 16.17        |
| Ravenstonedale, Kings Head           | 11.20        | 14.10        | 16.20        |
| Kirkby Stephen Station entrance      | 11.27        | 14.17        | 16.27        |
| <i>Trains from Leeds to Carlisle</i> | <i>11.06</i> | <i>15.01</i> | <i>17.04</i> |
| <i>Trains from Carlisle to Leeds</i> | <i>11.46</i> | <i>14.31</i> | <i>15.46</i> |
| Kirkby Stephen, Market Place         | 11.33        | 14.23        | 16.33        |
| Kirkby Stephen Co-op arr             |              |              | 16.34        |
| Kirkby Stephen Co-op dep             |              |              | 16.35        |
| Kirkby Stephen Market St             |              |              | 16.36        |
| Kirkby Stephen Station entrance      |              |              | 16.41        |
| Fat Lamb                             |              |              | 16.48        |
| Cautley, Cross Keys                  |              |              | 16.55        |
| Sedbergh, Maryfell                   |              |              | 17.03        |
| Sedbergh, Library                    |              |              | 17.05        |

## DENT RAILWAY STATION TIMETABLE

*Valid until 14th December 2019*

| Northbound to Carlisle<br>For Garsdale times, add 5 minutes |       |        | Southbound to Leeds<br>For Garsdale times, subtract 5 minutes |       |         |
|-------------------------------------------------------------|-------|--------|---------------------------------------------------------------|-------|---------|
| M-F                                                         | Sat   | Sun    | M-S                                                           | Sat   | Sun     |
| 06 48                                                       | 07 52 | 10 34  | 07 05                                                         | 09 09 | 10 40   |
| 09 16                                                       | 09 15 | 11 01* | 09 38                                                         | 10 41 | 14 05   |
| 10 48                                                       | 10 48 | 13 55  | 12 10                                                         | 12 10 | 16 18 ~ |
| 12 17                                                       | 12 17 | 15 52  | 16 04                                                         | 16 04 | 18 41   |
| 14 43                                                       | 14 43 | 17 48  | 17 32                                                         | 17 32 | 19 03 * |
| 16 46                                                       | 16 46 | 20 20  | 19 38                                                         | 19 38 | 20 27   |
| 18 15                                                       | 18 15 |        |                                                               |       |         |
| 19 44 #                                                     | 19 44 |        |                                                               |       |         |

\* = To From Blackpool North—runs until 8th September

# = Runs 3 minutes later on Friday

~ = From Nottingham

# BUS SERVICES

Western Dales Bus S4 Kirkby Stephen Connect  
from Friday 22nd June 2018 ufn R = Request only

|                                      | Fri   | Fri   | Fri   | Fri   |
|--------------------------------------|-------|-------|-------|-------|
| Dent                                 |       | 10.25 |       | 14.25 |
| Sedbergh, Spar                       |       | 10.39 | 12.44 | 14.39 |
| Sedbergh, Dalesman                   |       | 10.40 | 12.45 | 14.40 |
| Sedbergh, Maryfell                   |       | 10.41 | 12.46 | 14.41 |
| Cautley, Cross Keys                  |       | 10.48 | 12.53 | 14.48 |
| Fat Lamb                             |       | 10.54 | 12.59 | 14.54 |
| Kirkby Stephen Station arr           |       | 11.01 | 13.06 | 15.01 |
| <i>Trains from Leeds to Carlisle</i> |       | 11.06 | 12.35 | 15.01 |
| <i>Trains from Carlisle to Leeds</i> |       | 11.46 | -     | 15.46 |
| Kirkby Stephen Station dep           |       | 11.07 | 13.08 | 15.03 |
| Kirkby Stephen Town                  |       | 11.12 | 13.13 | 15.08 |
| Kirkby Stephen Co-op                 |       | 11.13 | 13.14 | 15.09 |
| Brough, Clock                        |       | 11.21 | 13.22 | 15.17 |
|                                      |       |       |       |       |
|                                      |       |       |       |       |
|                                      | Fri   | Fri   | Fri   | Fri   |
| Brough, Clock                        |       | 11.26 | 13.27 | 15.21 |
| Kirkby Stephen Co-op                 |       | 11.34 | 13.35 | 15.30 |
| Kirkby Stephen Town                  |       | 11.35 | 13.36 | 15.33 |
| Kirkby Stephen Station arr           |       | 11.40 | 13.41 | 15.38 |
| <i>Trains from Leeds to Carlisle</i> |       | -     | -     | -     |
| <i>Trains from Carlisle to Leeds</i> |       | 11.46 | -     | 15.46 |
| Kirkby Stephen Station dep           |       | 11.47 | 13.43 | 15.48 |
| Fat Lamb                             |       | 11.54 | 13.50 | 15.55 |
| Cautley, Cross Keys                  |       | 12.00 | 13.56 | 16.01 |
| Sedbergh, Maryfell                   |       | 12.07 | 14.03 | 16.08 |
| Sedbergh, Library                    | 10.05 | 12.08 | 14.04 | 16.09 |
| Sedbergh, opp. Morphets              | 10.06 | 12.09 | 14.05 | 16.10 |
| Dent                                 | 10.20 | -     | 14.19 | -     |

Fri = Friday Only

## Lookaround Editorial Team

|                          |                                 |                     |                                      |
|--------------------------|---------------------------------|---------------------|--------------------------------------|
| <b>Myles Ripley</b>      | <b>Team Leader and Chairman</b> | <b>Jane Fisher</b>  | <b>Proofreading</b>                  |
| <b>Susa Ellis</b>        | <b>Treasurer</b>                | <b>James Palmer</b> | <b>Proofreading</b>                  |
| <b>Philip Johns</b>      | <b>Secretary</b>                | <b>Ed Welti</b>     | <b>Compilation and Vice Chairman</b> |
| <b>Elsbeth Griffiths</b> | <b>Proofreading</b>             | <b>T.B.A.</b>       | <b>We hope!</b>                      |

All Editorial Team members are also Trustees.  
Dennis and Jackie Whicker are Life Time Presidents but are no longer involved in compilation



## Religious Services in Sedbergh

### CHURCH OF ENGLAND

St. Andrew's Parish Church  
Sunday 08.00, 10.30 & 18.30  
Wednesday 11.15

**Rev. A. McMullon Tel: 20018**

*Church Wardens:*

Tony Reed Screen 21081  
& Susan Sharrocks 20754  
www.sedbergh.org.uk/churches/anglican

~~~~~

ROMAN CATHOLIC

St. Andrew's Parish Church
Sunday 12.00
Holy Days 19.30

Parish Priest Kendal

Tel: 015397 20063

~~~~~

### CORNERSTONE COMMUNITY CHURCH

New Street  
Sunday 10.30

**Rev. David Crouchley Tel: 20329**

~~~~~

worship@peopleshall

1st Sunday each month 10:30 am

Rev David Crouchley Tel:20329

~~~~~

### SOCIETY OF FRIENDS

**QUAKERS**

Brigflatts  
Sunday 10.30

**Pam Coren (Clerk) Tel: 22586**

**Sally Ingham Tel:07939 569559**

~~~~~

DENTDALE

CHRISTIAN FELLOWSHIP

Rhumes, Dent LA10 5QJ
Every 4th Sunday 1900

Sarah Woof Tel: 25212

*Enquiries for the following services,
please ring the relevant telephone number*

~~~~~

### CHURCH OF ENGLAND

Cautley & Garsdale

**Rev. Andy McMullon Tel: 20018**

*Church Wardens:*

Cautley: Judith Bush 20058  
& Maureen Hinch 20843  
Garsdale: Rosemary Lord 20993  
& Bill Mawdsley 20723  
Firbank: Colin Wilson 20952  
& Jean Dixon 20435  
Howgill: Helen Hoggarth 20805  
& Pauline Marshall 21651  
Killington: Jennifer Thornely 20444  
& John Mather 015242 76333

Dent & Cowgill

**Rev. Andy McMullon Tel: 20018**

**Rev. Christine Brown Tel: 25418**

**Email: christinelucy2014@gmail.com**

~~~~~

METHODIST CHURCH

Dent; Dent Foot;
Cautley; Garsdale Street;
Garsdale Low Smithy; Hawes Junction
Rev. David Crouchley Tel: 20329

~~~~~

### SEDBERGH CHRISTIAN CENTRE

5.30 pm People's Hall every Sunday

**Tel: 28151**

www.sedberghchristiancentre.co.uk

~~~~~

UNITARIAN & FREE CHRISTIAN CHAPEL

Market Place, Kendal

Sunday 11.00

Amanda Reynolds Tel: 07545 375721

Combined plans for Western Dales Mission Community - December 2019						
	Time	1 st	8 th	15 th	22 nd	29 th
St. Andrew's, Sedbergh LA10 5BZ	8am	HC-BCP	HC-BCP	HC-BCP	HC-BCP	HC-BCP
St. Andrew's, Sedbergh LA10 5BZ	10.30pm	United Service 6pm Advent Carols	HC	HC	FS Carols 6.30pm Town Carol Service	United Service
Comerstone Community Church, Sedbergh LA10 5AF	10.30am	United Service at St. Andrew's or People's Hall	David Crouchley HC	Nora Alderson Sunday Club Celebration 4pm- Messy Church	David Crouchley 6.30pm WDMC Town Carol Service	United service at St Andrew's
People's Hall Sedbergh LA10 5DQ	10.30am	David Crouchley				
St. Mark's, Cautley LA10 5LZ		2.30pm HC	9.30am MP-NC	At Sedbergh	2.30pm Carols	At Cautley Methodist Chapel
Cautley Methodist Chapel LA10 5LY	11am	Brian Park	Sarah Crouchley	David Crouchley	William Allen	Philip Nolan United Service
St. John's, Garsdale LA10	10am	United Service	At Garsdale Low Smythly United Service	At Garsdale Street United Service	Service of the Word	Service of the Word
Garsdale Low Smythly Methodist Chapel LA10 5PF	2pm	At St. John's United Service	Hazel Jackson United Service	At Garsdale Street United Service	Brian Park	Ralph Penny-Larter
Garsdale Street Methodist Chapel LA10 5PQ	6.30pm	At St. John's United Service	At Low Smythly United Service	Pam Dent Carols United Service	June Allen	Martin Dodds
All Saints, Killington LA6 2HA		At Sedbergh	At Sedbergh	At Sedbergh	Nativity & Carols 23 rd at 5pm	At Sedbergh
Holy Trinity Howgill LA10 5JD		At Sedbergh	At Sedbergh	At Sedbergh	Carols 2pm	At Sedbergh
St. John's Firbank LA10 5EF		At Sedbergh	At Sedbergh	At Sedbergh	Carols 23 rd at 7pm	At Sedbergh
St. Andrew's, Dent LA10 5QL	10.30am	HC	HC	HC	HC 7pm- Carols	HC United Service
St. John's, Cowgill LA10 5RJ		9am HC	At Dent	2.30pm EP Carols – 19 th	At Dent	At Dent
Dentdale Methodist Chapel LA10 5QJ	2pm	Chris Fawcett	TBC Carols	William Allen	David Crouchley HC	Pam Dent
Dent Foot Methodist Chapel LA10	2pm	David Crouchley	At Dentdale	June Allen	At Dentdale	Philip Nolan
	Wednesday	4 th	11 th	18 th	25 th	
St. Andrew's, Sedbergh LA10 5BZ	11.15am	HC-BCP	HC-BCP	HC-BCP		
HC- Holy Communion (HCx- Extended Communion) SW- Service of the Word FS- Family Service HS- Healing service			Ecu- Ecumenical CM- Choral Matins (BCP) P&M- Prayer & Meditation EP- Evening Prayer			

Combined plans for Western Dales Mission Community - January 2020						
St. Andrew's, Sedbergh LA10 5BZ	8am		HC-BCP	HC-BCP	HC-BCP	HC-BCP
St. Andrew's, Sedbergh LA10 5BZ	10.30pm		United Service at Cornerstone or People's Hall	HC	HC	FS
Cornerstone Community Church, Sedbergh LA10 5AF	10.30am		United Service at Cornerstone or People's Hall Philip Nolan	Covenant Service David Crouchley	Circuit Tebbutt 4pm- Messy Church	David Crouchley
People's Hall Sedbergh LA10 5DQ	10.30am		Dick Gorst			
St. Mark's, Cautley LA10 5LZ			2.30pm HCx	9.30am MP-NC	At Sedbergh	2.30pm Prayer & Meditation
Cautley Methodist Chapel LA10 5LY	11am		Brian Park	OA	At Sedbergh	W. Allen
St. John's, Garsdale LA10	10am		United Service HC	At Garsdale Low Smithy United Service	At Garsdale Street United Service	Service of the Word
Garsdale Low Smithy Methodist Chapel LA10 5PF	2pm		At St. John's United Service	United Service Pam Dent	At Garsdale Street United Service	Philip Nolan
Garsdale Street Methodist Chapel LA10 5PQ	6.30pm		At St. John's United Service	At Low Smithy United Service	United Service David Crouchley	Brian Park
All Saints, Killington LA6 2HA	2.00pm		At Sedbergh	At Sedbergh	2.00pm HC	At Sedbergh
Holy Trinity Howgill LA10 5JD	10.30am		At Sedbergh	At Sedbergh	At Killington	At Sedbergh
St. John's Firbank LA10 5EF	10.30am		At Sedbergh	At Sedbergh	At Killington	At Sedbergh
St. Andrew's, Dent LA10 5QL	10.30am		HC	HC	HC	HC
St. John's, Cowgill LA10 5RJ			2.30pm HC	At Dent	2.30pm EP	At Dent
Dentdale Methodist Chapel LA10 5QJ	2pm		June Allen	Sarah Crouchley	Chris Fawcett	David Crouchley
Dent Foot Methodist Chapel LA10	2pm		At Dentdale	At Dentdale	At Dentdale	At Dentdale
	Wednesday	1st	8 th	15 th	22 nd	29 th
St. Andrew's, Sedbergh LA10 5BZ	11.15am	HC-BCP	HC-BCP	HC-BCP	HC-BCP	HC-BCP
HC- Holy Communion (HCx- Extended Communion) SW- Service of the Word FS- Family Service HS- Healing service			Ecu- Ecumenical CM- Choral Matins (BCP) P&M- Prayer & Meditation EP- Evening Prayer			

PUBLIC INFORMATION

Sedbergh Medical Practice

01539 718191

When we are closed please ring
111 or 999 if appropriate

Option 1 - 24hr Prescription line

Surgery and Dispensary Opening Hours

Monday – Friday 8am – 6.30pm
(Doors open at 8.15am)

Doctors Clinics

Monday – Friday

Open Surgery – 8.30am – 10.00am

(No appointment necessary)

Late Morning – 10.30am -12.30pm

(By appointment only)

Afternoon – 2.30pm – 6pm

(By appointment only)

Surgery by appointment only –
Early Morning Tuesday & Thursday
Late evening Monday & Tuesday

Dent Surgery

Monday by appointment only

Practice Nurses Clinics

Monday – Friday – 8.30am -6pm

(By appointment only)

Baby Immunisations/Travel Clinic – Wednesday
afternoons

(By appointment only)

Dressings Clinic – Friday afternoons

(By appointment only)

Blood clinic

Monday – Thursday – 8.20am – 12pm

(By appointment only)

**Please telephone the surgery to make
appointments for all the above clinics.**

See our website

www.sedberghmp.nhs.uk

for further details

Bridging the Gap

First Monday - 1400 - 1600

Mrs Colpus 01228 595937

Location of Public Defibrillators

72 Main Street

People's Hall, Howgill Lane

Fire Station, Long Lane

*Access Codes to the Defribs are supplied
on contacting Ambulance Control on 999*

POLICE

101 or 999

Crimestoppers 0800 555 111

Community Officer

Kathryn Taylor

Telephone: 101

Email: 101@cumbria.police.uk

DENTAL SURGERY

Main Street 20626

Ben Houghton (principal), Miss Katie McKay,
Katherine Parrott-Edwards & Sarah Boom
(Hygienist)

Monday to Friday 0900 - 1700

SEDBERGH LIBRARY Main Street 20186

Monday 1700 - 1900

Wednesday 1000 - 1230 1400 - 1700

Friday 1400 - 1700

Saturday 1000 - 1230

DENT LIBRARY Main Street 01539 713520

Tuesday 0900 - 1900

Saturday 0900 - 1400

SEDBERGH & DISTRICT INFORMATION CENTRE

for resident & visitor information

72 Main Street, Sedbergh

Open Monday to Saturday 1000 - 1600

Sunday 1200 to 1600

e-mail: tic@sedbergh.org.uk

Tel: 015396 20125/20504

www.sedbergh.org.uk

If you are an event organiser or accommodation
provider and you would like a listing on the
website, or if you are a local organisation and want
the website to carry information about your
activities, please email the Information and Book
Centre on office@sedbergh.org.uk."

VETERINARY SURGERY

14 Long Lane

015396 20335 (including emergencies)

Mr N. Preston & Mr J. Bramley

Dispensary Monday to Friday 0900 - 1300

1400 - 1700

Consultations Monday to Friday 0900 - 1000 *

1400 - 1500 *

Other times by appointment only *

PUBLIC TOILETS

Main Street, Sedbergh

Main Street, Dent

POST OFFICE

Main Street - Phone 20406

MARKET DAY

Wednesday

Last Page Update:

March 2019